

# Cochran County, Texas

## Adopted Budget

### 2016



Texas Comptroller  
Leadership Circle

Platinum Member  
6th Year Award

“This budget will raise less revenue from property taxes than last year's budget. The property tax revenue to be raised from new property added to the tax roll this year is \$9,020.”

The members of the Commissioners Court voting on the adoption of the 2016 budget:

For: Commissioners Donnie Simpson, Bruce Heflin, Stacey Dunn, and Reynaldo Morin; Judge Pat Sabala Henry

Against: None

| Type of Levy:             | General |         | Farm to Market/<br>Flood Control |         | County-Wide School<br>Equalization |         |
|---------------------------|---------|---------|----------------------------------|---------|------------------------------------|---------|
|                           | 2014    | 2015    | 2014                             | 2015    | 2014                               | 2015    |
| Property Tax Rate         | 0.38050 | 0.59880 | 0.15010                          | 0.23650 | 0.05330                            | 0.08450 |
| Effective Tax Rate        | 0.38050 | 0.60320 | 0.15010                          | 0.23830 | 0.05330                            | 0.08450 |
| Effective M & O* Tax Rate | 0.38050 | 0.60320 | 0.15010                          | 0.23830 | 0.05330                            | 0.08450 |
| Rollback Tax Rate         | 0.41090 | 0.65140 | 0.16210                          | 0.25730 | 0.05750                            | 0.09120 |
| Debt Rate                 | 0.00000 | 0.00000 | 0.00000                          | 0.00000 | 0.00000                            | 0.00000 |

\*Maintenance and Operations

## TABLE OF CONTENTS

|  |       |
|--|-------|
| Order Adopting Budget .....  | i     |
| Order Setting Tax Rates.....   | ii    |
| County Officials.....  | 1     |
| Budget Letter .....  | 2     |
| Estimated Tax Collections .....  | 3     |
| Tax Collection History.....  | 4     |
| Budget Summary - All Budgeted Funds Combined .....                         | 5     |
| Budget Summary - General Fund .....  | 6     |
| Budget Summary - Road and Bridge Fund.....                                 | 7     |
| Budget Summary - Personal Bond Office Fund .....                           | 8     |
| Budget Summary - Alternative Dispute Resolution System Fund .....          | 9     |
| Budget Summary - Lateral Road Fund .....                                   | 10    |
| Budget Summary - County Clerk Records Management & Preservation Fund ..... | 11    |
| Budget Summary - County Records Management & Preservation Fund.....        | 12    |
| Budget Summary - Courthouse Security Fund .....                            | 13    |
| Budget Summary - Court Reporter Service Fund.....                          | 14    |
| Budget Summary - Airport Fund .....  | 15    |
| Budget Summary - By Department - General Fund .....                        | 16    |
| Budget Summary - By Department - Road & Bridge Fund .....                  | 17    |
| Budget Details - General Fund .....  | 18-48 |
| Budget Details - Road and Bridge Fund .....                                | 49-54 |
| Budget Details - Personal Bond Office Fund .....                           | 55    |
| Budget Details - Alternative Dispute Resolution System Fund .....          | 56    |
| Budget Details - Lateral Road Fund .....                                   | 57    |
| Budget Details - County Clerk Records Management & Preservation Fund ..... | 58    |
| Budget Details - County Records Management & Preservation Fund .....       | 59    |
| Budget Details - Courthouse Security Fund .....                            | 60    |
| Budget Details - Court Reporter Service Fund.....                          | 61    |
| Budget Details - Airport Fund .....  | 62-63 |
| Compensation Schedule for 2016 .....                                       | 64    |
| Cochran County Organization Chart .....                                    | 65    |
| Supplemental Information for Major Funds .....                             | 66    |

Order Adopting Budget for 2016

It is hereby ordered that the attached budget for calendar year 2016 be adopted as the official budget of Cochran County, and that the level of budgetary control of expenditures shall be the "Category" level rather than the "Line Item" level.

Passed and approved this 14th day of September, 2015.

*(We prefer to not publish signatures on the internet)*

---

Pat Sabala Henry, County Judge

*(We prefer to not publish signatures on the internet)*

---

Donnie Simpson, Commissioner

*(We prefer to not publish signatures on the internet)*

---

Stacey Dunn, Commissioner

*(We prefer to not publish signatures on the internet)*

---

Bruce Heflin, Commissioner

*(We prefer to not publish signatures on the internet)*

---

Reynaldo Morin, Commissioner

*(We prefer to not publish signatures on the internet)*

---

Attest: Shanna Dewbre, Clerk

Order Setting Tax Rates

Be it ordered by the Cochran County Commissioners Court, in a properly posted and advertised meeting held this 12th day of September, 2015 in the Cochran County Courthouse, that the following tax rates be adopted for the year 2015:

General Levy \$ 0.5988 per \$100 valuation  
Farm-to-Market/Flood Control Levy \$ 0.2365 per \$100 valuation

Total rate \$0.8353 per \$100 valuation

**THIS TAX RATE WILL RAISE LESS TAXES FOR MAINTENANCE AND OPERATIONS THAN LAST YEAR'S TAX RATE.**

Neither partial payments nor discounts will be allowed unless mandated by state law.

Passed and approved this 12th day of September, 2015.

*(We prefer to not publish signatures on the internet)*

---

Pat Sabala Henry, County Judge

*(We prefer to not publish signatures on the internet)*

---

Donnie Simpson, Commissioner

*(We prefer to not publish signatures on the internet)*

---

Stacey Dunn, Commissioner

*(We prefer to not publish signatures on the internet)..*

---

Bruce Heflin, Commissioner

*(We prefer to not publish signatures on the internet)*

---

Reynaldo Morin, Commissioner

*(We prefer to not publish signatures on the internet)*

---

Attest: Shanna Dewbre, Clerk

COCHRAN COUNTY, TEXAS

COUNTY OFFICIALS

|                       |                                  |
|-----------------------|----------------------------------|
| Pat Phelan            | Judge, 286th Judicial District   |
| Pat Sabala Henry      | County Judge                     |
| Donnie Simpson        | Commissioner, Precinct 1         |
| Bruce Heflin          | Commissioner, Precinct 2         |
| Stacey Dunn           | Commissioner, Precinct 3         |
| Reynaldo Morin        | Commissioner, Precinct 4         |
| Raymond Weber         | County Sheriff                   |
| J. Collier Adams, Jr. | County Attorney                  |
| Donna Schmidt         | Justice of the Peace, Precinct 1 |
| Christopher Dennis    | District Attorney                |
| Clarence Roberts      | Constable, Precinct 1            |
| Shanna Dewbre         | County & District Clerk          |
| Doris Sealy           | County Treasurer                 |
| Treva Jackson         | County Tax Assessor-Collector    |
| Danny Wiseley         | County Auditor                   |

## Budget Letter

July 30, 2015

To Whom It May Concern:

Pursuant to state law, the Cochran County Judge serves as the budget officer for the county. Assisted by the County Auditor, and with input from elected officials and department heads, the judge prepares a proposed budget each summer. Through a series of public meetings, the budget is then considered, amended if necessary, and adopted by the Cochran County Commissioners Court. Once adopted, the budget can be amended only by action of the court.

In Cochran County, funds are spent on a variety of efforts which are aimed at providing citizens with necessary services and improving the quality of life in our communities. In addition to the maintenance of roads, the county provides funding for facilities, court systems, law enforcement, emergency medical services, fire protection, recreational opportunities, senior citizens, parks, cemetery, a library and youth activities such as stock shows and a shooting range.

As shown by this budget, all Cochran County Funds are estimated to be on a cash basis at the beginning of the next budget year, January 1, 2017. Please feel free to speak with the County Judge or any of the County Commissioners if you have questions, concerns or suggestions regarding the county budget. Our process is open and transparent, and we are always interested in feedback from our citizens.

Cochran County has no indebtedness as of today, July 30, 2015.

Respectfully submitted,

*(We prefer to not publish signatures on the internet)*

---

Pat Sabala Henry, County Judge

*(We prefer to not publish signatures on the internet)*

---

Danny Wiseley, County Auditor

| Ad-Valorem Tax Revenue Estimation for Budget Year 2016 |    |             |   |           |
|--|----|-------------|---|-----------|
| <b>General Levy</b>                                    |    |             |   |           |
| Total Appraised Value per CAD                          | \$ | 532,729,006 |   |           |
| Total Assessed Value per CAD                           | \$ | 532,638,412 |   |           |
| Total Taxable Value per CAD                            | \$ | 523,366,360 |   |           |
| Tax Rate per \$100 value:                              |    |             | \$  | 0.5988    |
| Tax Levy for General Revenue (1)                       |    |             | \$  | 3,133,918 |
| <b>Farm-to-Market/Flood Control Levy</b>               |    |             |   |           |
| Total Appraised Value per CAD                          | \$ | 532,729,006 |   |           |
| Total Assessed Value per CAD                           | \$ | 532,638,412 |   |           |
| Taxable Value  | \$ | 521,279,560 |   |           |
| Tax Rate per \$100 value:                              |    |             | \$  | 0.2365    |
| Tax Levy for FM/FC (2)                                 |    |             | \$  | 1,232,826 |
| Total Tax Levy for General & FM/FC:                    |    |             | \$  | 4,366,744 |
| Estimated Collection Percentage During Budget Year     |    |             |   | 98%       |
| Total Estimated Current Collections During 2015        |    |             | \$  | 4,279,409 |
| (1) 98% of this levy =                                 | \$ | 3,071,239   | -See page 18, account number 000-4310.110 |           |
| (2) 98% of this levy =                                 | \$ | 1,208,170   | -See page 50, account number 000-4318.130 |           |

TAX COLLECTION HISTORY

| BUDGET YEAR | APPRAISED VALUATION | RATE PER \$100 | TOTAL AMOUNT LEVIED | COLLECTED DURING BUDGET YR. | PERCENT OF CURRENT LEVY |
|-------------|---------------------|----------------|---------------------|-----------------------------|-------------------------|
| 1985        | 952,854,168         | 0.1875         | 1,785,522           | 974,662                     | 54.59%                  |
| 1986        | 940,810,878         | 0.1825         | 1,715,606           | 1,592,065                   | 92.80%                  |
| 1987        | 824,299,253         | 0.1825         | 1,502,057           | 1,614,483                   | 107.48%                 |
| 1988        | 664,918,375         | 0.2150         | 1,428,083           | 1,327,258                   | 92.94%                  |
| 1989        | 655,518,980         | 0.2250         | 1,473,463           | 1,552,565                   | 105.37%                 |
| 1990        | 613,239,036         | 0.2590         | 1,587,013           | 1,550,988                   | 97.73%                  |
| 1991        | 635,859,813         | 0.2700         | 1,715,600           | 1,628,042                   | 94.90%                  |
| 1992        | 629,766,264         | 0.2800         | 1,762,132           | 1,864,162                   | 105.79%                 |
| 1993        | 583,489,050         | 0.3060         | 1,784,154           | 1,843,993                   | 103.35%                 |
| 1994        | 498,147,260         | 0.3720         | 1,851,555           | 1,778,985                   | 96.08%                  |
| 1995        | 354,149,430         | 0.5300         | 1,874,619           | 1,877,096                   | 100.13%                 |
| 1996        | 310,153,540         | 0.5300         | 1,641,419           | 1,602,256                   | 97.61%                  |
| 1997        | 318,773,220         | 0.5580         | 1,773,800           | 1,812,895                   | 102.20%                 |
| 1998        | 353,193,650         | 0.5400         | 1,903,511           | 1,836,348                   | 96.47%                  |
| 1999        | 321,309,630         | 0.6340         | 2,032,914           | 2,025,007                   | 99.61%                  |
| 2000        | 250,353,117         | 0.8050         | 2,012,329           | 2,078,898                   | 103.31%                 |
| 2001        | 279,122,480         | 0.7452         | 2,073,360           | 1,859,300                   | 89.68%                  |
| 2002        | 334,411,030         | 0.6550         | 2,184,174           | 2,188,199                   | 100.18%                 |
| 2003        | 301,110,640         | 0.7280         | 2,184,968           | 2,238,375                   | 102.44%                 |
| 2004        | 305,475,260         | 0.7378         | 2,246,605           | 2,261,416                   | 100.66%                 |
| 2005        | 324,467,990         | 0.7378         | 2,386,727           | 2,558,037                   | 107.18%                 |
| 2006        | 382,185,080         | 0.6700         | 2,552,364           | 2,030,571                   | 79.56%                  |
| 2007        | 503,328,640         | 0.5590         | 2,809,100           | 2,835,143                   | 100.93%                 |
| 2008        | 570,783,830         | 0.5334         | 3,040,154           | 3,198,446                   | 105.21%                 |
| 2009        | 723,327,490         | 0.4934         | 3,564,899           | 4,515,797                   | 126.67%                 |
| 2010        | 610,707,970         | 0.5849         | 3,566,651           | 3,514,909                   | 98.55%                  |
| 2011        | 729,485,690         | 0.5200         | 3,787,241           | 3,184,921                   | 84.10%                  |
| 2012        | 791,481,505         | 0.4790         | 3,785,605           | 4,704,580                   | 124.28%                 |
| 2013        | 927,665,437         | 0.4390         | 4,067,348           | 4,243,935                   | 104.34%                 |
| 2014        | 857,515,207         | 0.5160         | 4,379,464           | 4,318,329                   | 98.60%                  |
| 2015        | 833,216,599         | 0.5306         | 4,368,938           | 4,281,560*                  | 98.00%                  |

\*estimated



**SUMMARY OF ADOPTED BUDGET FOR 2016  
AND COMPARISON OF 2014 AND 2015 FIGURES  
\*ALL BUDGETARY FUNDS COMBINED\***

| Item               | 2014<br>Actual | 2015<br>Budget | 2016<br>Adopted<br>Budget | Comparison of<br>Current Year and<br>Budget as Adopted<br>Increase<br>(Decrease) |
|--------------------|----------------|----------------|---------------------------|--|
| Beginning Balance  | 4,616,405      | 4,692,730      | 3,745,818                 | (946,912)  |
| Ad Valorem Taxes   | 4,409,074      | 4,342,874      | 4,340,724                 | (2,150)  |
| Other Receipts     | 798,999        | 546,777        | 550,972                   | 4,195  |
| Total Receipts     | 5,208,074      | 4,889,651      | 4,891,696                 | 2,045  |
| Total Resources    | 9,824,478      | 9,582,381      | 8,637,514                 | (944,867)  |
| Total Expenditures | 5,131,748      | 6,651,537      | 6,416,749                 | (234,788)  |
| Ending Balances    | 4,692,730      | 2,930,844      | 2,220,765                 | (710,079)  |

**SUMMARY OF ADOPTED BUDGET FOR 2016  
AND COMPARISON OF 2014 AND 2015 FIGURES  
\*GENERAL FUND\***

| Item  | 2014<br>Actual | 2015<br>Budget | 2016<br>Adopted<br>Budget | Comparison of<br>Current Year and<br>Budget as Adopted<br>Increase<br>(Decrease) |
|---|----------------|----------------|---------------------------|--|
| Beginning Balance                                 | 3,493,305      | 3,486,311      | 2,701,702                 | (784,609)  |
| Ad Valorem Taxes                                  | 3,165,938      | 3,119,871      | 3,118,465                 | (1,406)  |
| Other Receipts                                    | 473,714        | 277,557        | 300,352                   | 22,795   |
| Total Receipts                                    | 3,639,652      | 3,397,428      | 3,418,817                 | 21,389   |
| Total Resources                                   | 7,132,957      | 6,883,739      | 6,120,519                 | (763,220)  |
| Total Expenditures                                | 3,626,646      | 4,244,053      | 4,262,494                 | 18,441   |
| Transfers to Airport and<br>Road and Bridge Funds | 20,000         | 120,000        | 120,000                   | -  |
| Ending Balances                                   | 3,486,311      | 2,519,686      | 1,738,025                 | (781,661)  |

The General Fund is used to account for all revenues and activities except those required to be accounted for in another fund.

**SUMMARY OF ADOPTED BUDGET FOR 2016  
AND COMPARISON OF 2014 AND 2015 FIGURES  
\*ROAD AND BRIDGE FUND\***

| Item                          | 2014<br>Actual | 2015<br>Budget | 2016<br>Adopted<br>Budget | Comparison of<br>Current Year and<br>Budget as Adopted<br>Increase<br>(Decrease) |
|-------------------------------|----------------|----------------|---------------------------|--|
| Beginning Balance             | 872,407        | 921,042        | 888,807                   | (32,235)   |
| Ad Valorem Taxes              | 1,243,137      | 1,223,003      | 1,222,259                 | (744)  |
| Other Receipts                | 290,984        | 239,000        | 218,600                   | (20,400)   |
| Transfer From<br>General Fund | -              | 100,000        | 100,000                   | -  |
| Total Receipts                | 1,534,120      | 1,562,003      | 1,540,859                 | (21,144)   |
| Total Resources               | 2,406,527      | 2,483,045      | 2,429,666                 | (53,379)   |
| Total Expenditures            | 1,485,485      | 2,188,340      | 1,980,940                 | (207,400)  |
| Ending Balances               | 921,042        | 294,705        | 448,726                   | 154,021  |

The Road and Bridge Fund is a special revenue fund required by the Texas Constitution, Article VII, Section 9. It is used to account for the proceeds of the Farm to market and Lateral Road tax levy, motor vehicle registration fees, traffic fines and other revenues required by law to be spent only on road construction and maintenance.

**SUMMARY OF ADOPTED BUDGET FOR 2016  
AND COMPARISON OF 2014 AND 2015 FIGURES  
\*PERSONAL BOND OFFICE FUND\***

| Item               | 2014<br>Actual | 2015<br>Budget | 2016<br>Adopted<br>Budget | Comparison of<br>Current Year and<br>Budget as Adopted<br>Increase<br>(Decrease) |
|--------------------|----------------|----------------|---------------------------|--|
| Beginning Balance  | 14,495         | 14,495         | 12,000                    | (2,495)  |
| Ad Valorem Taxes   | -              | -              | -                         | -  |
| Other Receipts     | -              | 100            | 100                       | -  |
| Total Receipts     | -              | 100            | 100                       | -  |
| Total Resources    | 14,495         | 14,595         | 12,100                    | (2,495)  |
| Total Expenditures | -              | 12,000         | 12,000                    | -  |
| Ending Balances    | 14,495         | 2,595          | 100                       | (2,495)  |

The Personal Bond Office Fund is a special revenue fund created in January 1991, to account for personal bond fees according to V.T.C.A., Code of Criminal Procedure, Art. 17.42. The use of these personal bond fees is restricted to the operational expenses of the personal bond office, including extradition costs.

**SUMMARY OF ADOPTED BUDGET FOR 2016  
AND COMPARISON OF 2014 AND 2015 FIGURES  
\*ALTERNATIVE DISPUTE RESOLUTION SYSTEM FUND\***

| Item               | 2014<br>Actual | 2015<br>Budget | 2016<br>Adopted<br>Budget | Comparison of<br>Current Year and<br>Budget as Adopted<br>Increase<br>(Decrease) |
|--------------------|----------------|----------------|---------------------------|--|
| Beginning Balance  | -              | 20             | 20                        | -  |
| Ad Valorem Taxes   | -              | -              | -                         | -  |
| Other Receipts     | 260            | 640            | 320                       | (320)  |
| Total Receipts     | 260            | 640            | 320                       | (320)  |
| Total Resources    | 260            | 660            | 340                       | (320)  |
| Total Expenditures | 240            | 640            | 320                       | (320)  |
| Ending Balances    | 20             | 20             | 20                        | -  |

The Alternative Dispute Resolution System Fund is a special revenue fund used to account for the proceeds of the Alternative Dispute Resolution System fees paid as court costs in each civil case, except suits for delinquent taxes, filed in a county or district court. Vernon's Texas Codes Annotated, Civil Practice and Remedies Code §152.004 mandates the creation of a separate fund.

**SUMMARY OF ADOPTED BUDGET FOR 2016  
AND COMPARISON OF 2014 AND 2015 FIGURES  
\*LATERAL ROAD FUND\***

| Item               | 2014<br>Actual | 2015<br>Budget | 2016<br>Adopted<br>Budget | Comparison of<br>Current Year and<br>Budget as Adopted<br>Increase<br>(Decrease) |
|--------------------|----------------|----------------|---------------------------|--|
| Beginning Balance  | 215,447        | 232,101        | 108,000                   | (124,101)  |
| Ad Valorem Taxes   | -              | -              | -                         | -  |
| Other Receipts     | 16,654         | 17,000         | 16,000                    | (1,000)  |
| Total Receipts     | 16,654         | 17,000         | 16,000                    | (1,000)  |
| Total Resources    | 232,101        | 249,101        | 124,000                   | (125,101)  |
| Total Expenditures | -              | 160,000        | 99,921                    | (60,079)   |
| Ending Balances    | 232,101        | 89,101         | 24,079                    | (65,022)   |

The Lateral Road Fund is used to account for the county's share of motor fuels tax collected by the State. This fund is required by V.T.C.A., §153.503 and V.T.C.S., Article 6702-1 §4.001(e) and can only be used for improvements or construction on the county's lateral roads.

**SUMMARY OF ADOPTED BUDGET FOR 2016  
AND COMPARISON OF 2014 AND 2015 FIGURES  
\*COUNTY CLERK RECORDS MANAGEMENT AND PRESERVATION FUND\***

| Item               | 2014<br>Actual | 2015<br>Budget | 2016<br>Adopted<br>Budget | Comparison of<br>Current Year and<br>Budget as Adopted<br>Increase<br>(Decrease) |
|--------------------|----------------|----------------|---------------------------|--|
| Beginning Balance  | 9,200          | 20,522         | 20,522                    | 0  |
| Ad Valorem Taxes   | -              | -              | -                         | -  |
| Other Receipts     | 11,322         | 5,600          | 9,600                     | 4,000  |
| Total Receipts     | 11,322         | 5,600          | 9,600                     | 4,000  |
| Total Resources    | 20,522         | 26,122         | 30,122                    | 4,000  |
| Total Expenditures | -              | 5,600          | 25,000                    | 19,400   |
| Ending Balances    | 20,522         | 20,522         | 5,122                     | (15,400)   |

The County Clerk Records Management and Preservation Fund is a special revenue fund required by V.T.C.A., Local Government Code, §203.003(5). This fund is used to account for fees charged by the county clerk under V.T.C.A., Local Government Code §118.011 which can only be used to provide funds for specific records preservation and automation projects.

**SUMMARY OF ADOPTED BUDGET FOR 2016  
AND COMPARISON OF 2014 AND 2015 FIGURES  
\*COUNTY RECORDS MANAGEMENT AND PRESERVATION FUND\***

| Item               | 2014<br>Actual | 2015<br>Budget | 2016<br>Adopted<br>Budget | Comparison of<br>Current Year and<br>Budget as Adopted<br>Increase<br>(Decrease) |
|--------------------|----------------|----------------|---------------------------|--|
| Beginning Balance  | 834            | 1,415          | 1,415                     | (0)  |
| Ad Valorem Taxes   | -              | -              | -                         | -  |
| Other Receipts     | 581            | 1,100          | 800                       | (300)  |
| Total Receipts     | 581            | 1,100          | 800                       | (300)  |
| Total Resources    | 1,415          | 2,515          | 2,215                     | (300)  |
| Total Expenditures | -              | 1,100          | 1,500                     | 400  |
| Ending Balances    | 1,415          | 1,415          | 715                       | (700)  |

The County Records Management and Preservation Fund is a special revenue fund created pursuant to V.T.C.A., Local Government Code, §203.003(6). It is used to account for records management and preservation fees authorized under V.T.C.A., Local Government Code §118.052, 118.0546, and 118.0645, V.T.C.A., Government Code §51.317, and V.T.C.A. Code of Criminal Procedure, Art. 102.005(d), which may be spent only for records management, preservation or automatiion purposes in the county.



**SUMMARY OF ADOPTED BUDGET FOR 2016  
AND COMPARISON OF 2014 AND 2015 FIGURES  
\*COURTHOUSE SECURITY FUND\***

| Item               | 2014<br>Actual | 2015<br>Budget | 2016<br>Adopted<br>Budget | Comparison of<br>Current Year and<br>Budget as Adopted<br>Increase<br>(Decrease) |
|--------------------|----------------|----------------|---------------------------|--|
| Beginning Balance  | 1,798          | 4,448          | 5,000                     | 552  |
| Ad Valorem Taxes   | -              | -              | -                         | -  |
| Other Receipts     | 2,799          | 3,000          | 2,600                     | (400)  |
| Total Receipts     | 2,799          | 3,000          | 2,600                     | (400)  |
| Total Resources    | 4,598          | 7,448          | 7,600                     | 152  |
| Total Expenditures | 150            | 13,000         | 7,000                     | (6,000)  |
| Ending Balances    | 4,448          | (5,552)        | 600                       | 6,152  |

The Courthouse Security Fund is a special revenue fund created pursuant to V.T.C.A., Code of Criminal Procedure, Art. 102.017, to account for court costs on convictions which can only be used to finance certain items when used for the purpose of providing security services for buildings housing a district or county court.

**SUMMARY OF ADOPTED BUDGET FOR 2016  
AND COMPARISON OF 2014 AND 2015 FIGURES  
\*COURT REPORTER SERVICE FUND\***

| Item               | 2014<br>Actual | 2015<br>Budget | 2016<br>Adopted<br>Budget | Comparison of<br>Current Year and<br>Budget as Adopted<br>Increase<br>(Decrease) |
|--------------------|----------------|----------------|---------------------------|--|
| Beginning Balance  | 1,474          | 1,759          | 1,739                     | (20)   |
| Ad Valorem Taxes   | -              | -              | -                         | -  |
| Other Receipts     | 285            | 480            | 300                       | (180)  |
| Total Receipts     | 285            | 480            | 300                       | (180)  |
| Total Resources    | 1,759          | 2,239          | 2,039                     | (200)  |
| Total Expenditures | -              | 500            | 1,200                     | 700  |
| Ending Balances    | 1,759          | 1,739          | 839                       | (900)  |

The Court Reporter Service Fund is used to account for fees collected under V.T.C.A., Government Code §51.601. the commissioners court of the county shall administer the court reporter service fund to assist in the payment of court-reporter-related services, that may include maintaining an adequate number of court reporters to provide services to the courts, obtaining court reporter transcription services, closed-caption transcription machines, Braille transcription services, or other transcription services to comply with state or federal laws, or providing any other service related to the functions of a court reporter.

**SUMMARY OF ADOPTED BUDGET FOR 2016  
AND COMPARISON OF 2014 AND 2015 FIGURES  
\*AIRPORT FUND\***

| Item                          | 2014<br>Actual | 2015<br>Budget | 2016<br>Adopted<br>Budget | Comparison of<br>Current Year and<br>Budget as Adopted<br>Increase<br>(Decrease) |
|-------------------------------|----------------|----------------|---------------------------|--|
| Beginning Balance             | 7,444          | 10,617         | 6,613                     | (4,004)  |
| Ad Valorem Taxes              | -              | -              | -                         | -  |
| Other Receipts                | 2,400          | 2,300          | 2,300                     | -  |
| Transfer from<br>General Fund | 20,000         | 20,000         | 20,000                    | -  |
| Total Receipts                | 22,400         | 22,300         | 22,300                    | -  |
| Total Resources               | 29,844         | 32,917         | 28,913                    | (4,004)  |
| Total Expenditures            | 19,227         | 26,304         | 26,374                    | 70   |
| Ending Balances               | 10,617         | 6,613          | 2,539                     | (4,074)  |

The Airport Fund was created in 1997 (for 1998 budget) due to requirements of a state grant for airport improvements.

C O C H R A N C O U N T Y  
 BUDGET COMPARISON REPORT  
 AS OF: SEPTEMBER 14TH, 2015

**10 -GENERAL FUND**

|   | CURRENT<br>BUDGET | ADOPTED<br>BUDGET | BUDGET<br>CHANGE | PERCENT<br>CHANGE |
|---|-------------------|-------------------|------------------|-------------------|
| -----                                   |                   |                   |                  |                   |
| REVENUE SUMMARY                         |                   |                   |                  |                   |
| -----                                   |                   |                   |                  |                   |
| TAXES                                   | 3,119,871.00      | 3,118,465.00      | ( 1,406.00)      | 0.05-             |
| LICENSES & PERMITS                      | 6,000.00          | 6,000.00          | 0.00             | 0.00              |
| INTERGOVERNMENTAL REVENUE               | 60,300.00         | 74,895.00         | 14,595.00        | 24.20             |
| CHARGES FOR SERVICES                    | 147,743.00        | 155,943.00        | 8,200.00         | 5.55              |
| MISCELLANEOUS                           | 63,514.00         | 63,514.00         | 0.00             | 0.00              |
| TRANSFERS FROM OTHER FUND               | 0.00              | 0.00              | 0.00             | 0.00              |
|   | -----             | -----             | -----            | -----             |
| *** TOTAL REVENUES ***                  | 3,397,428.00      | 3,418,817.00      | 21,389.00        | 0.63              |
|   | =====             | =====             | =====            | =====             |
| EXPENDITURE SUMMARY                     |                   |                   |                  |                   |
| -----                                   |                   |                   |                  |                   |
| COUNTY JUDGE                            | 141,503.00        | 152,922.00        | 11,419.00        | 8.07              |
| COUNTY AND DISTRICT CLERK               | 214,540.00        | 204,864.00        | ( 9,676.00)      | 4.51-             |
| VETERANS' SERVICE OFFICER               | 6,219.00          | 6,219.00          | 0.00             | 0.00              |
| NON-DEPARTMENTAL                        | 373,100.00        | 377,100.00        | 4,000.00         | 1.07              |
| VOTER REGISTRATION                      | 0.00              | 0.00              | 0.00             | 0.00              |
| COUNTY COURT                            | 23,000.00         | 23,000.00         | 0.00             | 0.00              |
| DISTRICT COURT                          | 63,117.00         | 63,930.00         | 813.00           | 1.29              |
| JUSTICE OF THE PEACE                    | 117,200.00        | 120,819.00        | 3,619.00         | 3.09              |
| COUNTY ATTORNEY                         | 185,841.00        | 185,841.00        | 0.00             | 0.00              |
| DISTRICT ATTORNEY                       | 28,100.00         | 32,495.00         | 4,395.00         | 15.64             |
| ELECTIONS                               | 62,181.00         | 67,031.00         | 4,850.00         | 7.80              |
| COUNTY AUDITOR                          | 138,907.00        | 143,271.00        | 4,364.00         | 3.14              |
| COUNTY TREASURER                        | 138,968.00        | 138,968.00        | 0.00             | 0.00              |
| TAX ASSESSOR/COLLECTOR                  | 247,489.00        | 245,970.00        | ( 1,519.00)      | 0.61-             |
| COURTHOUSE                              | 287,027.00        | 287,027.00        | 0.00             | 0.00              |
| COUNTY JAIL                             | 242,225.00        | 242,225.00        | 0.00             | 0.00              |
| CEMETERY                                | 126,918.00        | 126,918.00        | 0.00             | 0.00              |
| CONSTABLE                               | 58,338.00         | 58,338.00         | 0.00             | 0.00              |
| SHERIFF                                 | 956,169.00        | 960,409.00        | 4,240.00         | 0.44              |
| ADULT PROBATION                         | 2,104.00          | 2,104.00          | 0.00             | 0.00              |
| JUVENILE PROBATION                      | 81,592.00         | 81,592.00         | 0.00             | 0.00              |
| PUBLIC SAFETY * OTHER                   | 128,500.00        | 128,500.00        | 0.00             | 0.00              |
| WELFARE                                 | 11,250.00         | 11,250.00         | 0.00             | 0.00              |
| COUNTY LIBRARY                          | 108,072.00        | 110,186.00        | 2,114.00         | 1.96              |
| MUSEUM                                  | 21,236.00         | 21,236.00         | 0.00             | 0.00              |
| COUNTY PARK                             | 99,463.00         | 99,463.00         | 0.00             | 0.00              |
| ACTIVITY BUILDING                       | 177,826.00        | 177,826.00        | 0.00             | 0.00              |
| SENIOR CITIZENS                         | 76,000.00         | 76,000.00         | 0.00             | 0.00              |
| EXTENSION SERVICE                       | 127,168.00        | 116,990.00        | ( 10,178.00)     | 8.00-             |
| TRANSFERS TO OTHER FUNDS                | 120,000.00        | 120,000.00        | 0.00             | 0.00              |
|   | -----             | -----             | -----            | -----             |
| *** TOTAL EXPENDITURES ***              | 4,364,053.00      | 4,382,494.00      | 18,441.00        | 0.42              |
|   | =====             | =====             | =====            | =====             |
| ** REVENUES OVER(UNDER) EXPENDITURES ** | ( 966,625.00)     | ( 963,677.00)     | 2,948.00         | 0.30-             |
|   | =====             | =====             | =====            | =====             |

C O C H R A N C O U N T Y  
 BUDGET COMPARISON REPORT  
 AS OF: SEPTEMBER 14TH, 2015

**15 -ROAD & BRIDGE FUND**

|   | CURRENT<br>BUDGET    | ADOPTED<br>BUDGET    | BUDGET<br>CHANGE     | PERCENT<br>CHANGE |
|---|----------------------|----------------------|----------------------|-------------------|
| -----                                   |                      |                      |                      |                   |
| REVENUE SUMMARY                         |                      |                      |                      |                   |
| -----                                   |                      |                      |                      |                   |
| TAXES                                   | 1,223,003.00         | 1,222,259.00         | ( 744.00)            | 0.06-             |
| LICENSES & PERMITS                      | 177,500.00           | 187,500.00           | 10,000.00            | 5.63              |
| FINES & FORFEITURES                     | 56,000.00            | 25,600.00            | ( 30,400.00)         | 54.29-            |
| MISCELLANEOUS                           | 5,500.00             | 5,500.00             | 0.00                 | 0.00              |
| TRANSFERS FROM OTHER FUND               | 100,000.00           | 100,000.00           | 0.00                 | 0.00              |
|   | -----                | -----                | -----                | -----             |
| *** TOTAL REVENUES ***                  | <u>1,562,003.00</u>  | <u>1,540,859.00</u>  | <u>( 21,144.00)</u>  | <u>1.35-</u>      |
| EXPENDITURE SUMMARY                     |                      |                      |                      |                   |
| -----                                   |                      |                      |                      |                   |
| COMMISSIONERS COURT                     | 357,946.00           | 357,946.00           | 0.00                 | 0.00              |
| PRECINCT ONE                            | 614,684.00           | 471,763.00           | ( 142,921.00)        | 23.25-            |
| PRECINCT TWO                            | 369,722.00           | 369,722.00           | 0.00                 | 0.00              |
| PRECINCT THREE                          | 496,808.00           | 322,408.00           | ( 174,400.00)        | 35.10-            |
| PRECINCT FOUR                           | 489,101.00           | 459,101.00           | ( 30,000.00)         | 6.13-             |
|   | -----                | -----                | -----                | -----             |
| *** TOTAL EXPENDITURES ***              | <u>2,328,261.00</u>  | <u>1,980,940.00</u>  | <u>( 347,321.00)</u> | <u>14.92-</u>     |
| ** REVENUES OVER(UNDER) EXPENDITURES ** | <u>( 766,258.00)</u> | <u>( 440,081.00)</u> | <u>326,177.00</u>    | <u>42.57-</u>     |

C O C H R A N C O U N T Y  
 BUDGET COMPARISON REPORT  
 AS OF: SEPTEMBER 14TH, 2015

**10 -GENERAL FUND**

**REVENUES**

|   | CURRENT<br>BUDGET   | ADOPTED<br>BUDGET   | BUDGET<br>CHANGE   | PERCENT<br>CHANGE |
|---|---------------------|---------------------|--------------------|-------------------|
| <b>TAXES</b>                                |                     |                     |                    |                   |
| 000-4310.110 CURRENT TAXES-GENERAL LEVY     | 3,072,645.00        | 3,071,239.00        | ( 1,406.00)        | 0.05-             |
| 000-4310.120 DELINQUENT TAXES               | 27,226.00           | 27,226.00           | 0.00               | 0.00              |
| 000-4319.120 PENALTY AND INTEREST           | 20,000.00           | 20,000.00           | 0.00               | 0.00              |
| <b>TOTAL TAXES</b>                          | <b>3,119,871.00</b> | <b>3,118,465.00</b> | <b>( 1,406.00)</b> | <b>0.05-</b>      |
| <b>LICENSES &amp; PERMITS</b>               |                     |                     |                    |                   |
| 000-4321.600 BURIAL AND MONUMENT PERMITS    | 6,000.00            | 6,000.00            | 0.00               | 0.00              |
| <b>TOTAL LICENSES &amp; PERMITS</b>         | <b>6,000.00</b>     | <b>6,000.00</b>     | <b>0.00</b>        | <b>0.00</b>       |
| <b>INTERGOVERNMENTAL REVENUE</b>            |                     |                     |                    |                   |
| 000-4333.301 STATE COMP-MIXED BEVERAGE TAX  | 300.00              | 300.00              | 0.00               | 0.00              |
| 000-4333.305 OTHER STATE GRANTS             | 10,000.00           | 10,000.00           | 0.00               | 0.00              |
| 000-4333.400 STATE SAL SUPP FOR CNTY OFF'RS | 50,000.00           | 60,200.00           | 10,200.00          | 20.40             |
| 000-4333.401 STATE SAL/FB REIMB FOR D.A.    | 0.00                | 4,395.00            | 4,395.00           | 0.00              |
| <b>TOTAL INTERGOVERNMENTAL REVENUE</b>      | <b>60,300.00</b>    | <b>74,895.00</b>    | <b>14,595.00</b>   | <b>24.20</b>      |
| <b>CHARGES FOR SERVICES</b>                 |                     |                     |                    |                   |
| 000-4340.100 COUNTY JUDGE                   | 300.00              | 300.00              | 0.00               | 0.00              |
| 000-4340.200 SHERIFF                        | 10,000.00           | 6,000.00            | ( 4,000.00)        | 40.00-            |
| 000-4340.300 COUNTY ATTORNEY                | 2,000.00            | 200.00              | ( 1,800.00)        | 90.00-            |
| 000-4340.400 COUNTY AND DISTRICT CLERK      | 40,000.00           | 40,000.00           | 0.00               | 0.00              |
| 000-4340.401 CRT INITIATED GUARDIANSHIP     | 0.00                | 0.00                | 0.00               | 0.00              |
| 000-4340.402 RECORDS ARCHIVE FEE 118.011    | 0.00                | 0.00                | 0.00               | 0.00              |
| 000-4340.500 TAX ASSESSOR/COLLECTOR         | 75,000.00           | 95,000.00           | 20,000.00          | 26.67             |
| 000-4340.600 DISTRICT ATTORNEY              | 0.00                | 0.00                | 0.00               | 0.00              |
| 000-4340.700 TREASURER                      | 4,000.00            | 2,000.00            | ( 2,000.00)        | 50.00-            |
| 000-4340.801 JUSTICE OF THE PEACE           | 9,000.00            | 5,000.00            | ( 4,000.00)        | 44.44-            |
| 000-4340.811 CONSTABLE FEES                 | 0.00                | 0.00                | 0.00               | 0.00              |
| 000-4340.900 JUVENILE PROBATION FEES        | 1,500.00            | 1,500.00            | 0.00               | 0.00              |
| 000-4340.901 COURT REPORTER                 | 0.00                | 0.00                | 0.00               | 0.00              |
| 000-4348.001 PROBATE COURT EDUCATION FEE    | 36.00               | 36.00               | 0.00               | 0.00              |
| 000-4349.112 COURT COST FOR LAW LIBRARY     | 1,300.00            | 1,300.00            | 0.00               | 0.00              |
| 000-4349.902 80% STATE OFFICER ARR. FEES    | 800.00              | 800.00              | 0.00               | 0.00              |
| 000-4349.903 JURY FEES                      | 90.00               | 90.00               | 0.00               | 0.00              |
| 000-4349.904 TRAFFIC COURT COSTS 6701D,1    | 1,167.00            | 1,167.00            | 0.00               | 0.00              |
| 000-4349.905 CRIMINAL H.B. 11 JSF 15% -4    | 300.00              | 300.00              | 0.00               | 0.00              |
| 000-4349.906 CHILD ABUSE P. CCP102.0186(    | 200.00              | 200.00              | 0.00               | 0.00              |
| 000-4349.907 JUV DELQ GRAFFITI CCP102.01    | 0.00                | 0.00                | 0.00               | 0.00              |
| 000-4349.908 COURT TECHNOLOGY FEE           | 250.00              | 250.00              | 0.00               | 0.00              |
| 000-4349.909 JP TECHNOLOGY FUND             | 1,800.00            | 1,800.00            | 0.00               | 0.00              |
| <b>TOTAL CHARGES FOR SERVICES</b>           | <b>147,743.00</b>   | <b>155,943.00</b>   | <b>8,200.00</b>    | <b>5.55</b>       |

C O C H R A N C O U N T Y  
 BUDGET COMPARISON REPORT  
 AS OF: SEPTEMBER 14TH, 2015

**10 -GENERAL FUND**

**REVENUES (CONTINUED)**

|                                     | CURRENT<br>BUDGET | ADOPTED<br>BUDGET | BUDGET<br>CHANGE | PERCENT<br>CHANGE |
|-------------------------------------|-------------------|-------------------|------------------|-------------------|
| -----                               |                   |                   |                  |                   |
| MISCELLANEOUS                       |                   |                   |                  |                   |
| -----                               |                   |                   |                  |                   |
| 000-4360.100 INTEREST EARNINGS      | 33,000.00         | 33,000.00         | 0.00             | 0.00              |
| 000-4364.100 SALE OF ASSETS         | 1,000.00          | 1,000.00          | 0.00             | 0.00              |
| 000-4367.101 DONATIONS FOR CEMETERY | 100.00            | 100.00            | 0.00             | 0.00              |
| 000-4367.102 DONATIONS FOR LIBRARY  | 100.00            | 100.00            | 0.00             | 0.00              |
| 000-4370.101 RENT-ACTIVITY BUILDING | 16,000.00         | 16,000.00         | 0.00             | 0.00              |
| 000-4370.102 RENT-PARK FACILITIES   | 0.00              | 0.00              | 0.00             | 0.00              |
| 000-4370.103 SALE OF CEMETERY LOTS  | 3,000.00          | 3,000.00          | 0.00             | 0.00              |
| 000-4370.104 RENT-TxDOT BLDG        | 0.00              | 0.00              | 0.00             | 0.00              |
| 000-4370.105 VEHICLE LEASES         | 8,264.00          | 8,264.00          | 0.00             | 0.00              |
| 000-4370.300 ROYALTIES              | 50.00             | 50.00             | 0.00             | 0.00              |
| 000-4380.200 OTHER [MISCELLANEOUS]  | 2,000.00          | 2,000.00          | 0.00             | 0.00              |
| -----                               |                   |                   |                  |                   |
| TOTAL MISCELLANEOUS                 | 63,514.00         | 63,514.00         | 0.00             | 0.00              |
| TRANSFERS FROM OTHER FUNDS          |                   |                   |                  |                   |
| -----                               |                   |                   |                  |                   |
| 000-4390 TRANSFERS FROM OTHER FUNDS | 0.00              | 0.00              | 0.00             | 0.00              |
| -----                               |                   |                   |                  |                   |
| TOTAL TRANSFERS FROM OTHER FUNDS    | 0.00              | 0.00              | 0.00             | 0.00              |
| *** TOTAL REVENUES ***              | 3,397,428.00      | 3,418,817.00      | 21,389.00        | 0.63              |
|                                     | =====             | =====             | =====            | =====             |

9-14-2015 01:41 PM

C O C H R A N C O U N T Y  
BUDGET COMPARISON REPORT  
AS OF: SEPTEMBER 14TH, 2015

10 -GENERAL FUND

**COUNTY JUDGE**

DEPARTMENT EXPENDITURES

|                                | CURRENT<br>BUDGET             | ADOPTED<br>BUDGET | BUDGET<br>CHANGE | PERCENT<br>CHANGE |       |
|--------------------------------|-------------------------------|-------------------|------------------|-------------------|-------|
| -----                          |                               |                   |                  |                   |       |
| PERSONAL SERVICES              |                               |                   |                  |                   |       |
| -----                          |                               |                   |                  |                   |       |
| 400-5101                       | COUNTY JUDGE'S SALARY         | 43,934.00         | 43,934.00        | 0.00              | 0.00  |
| 400-5101.001                   | STATE SALARY SUPPLEMENT-JUDGE | 15,000.00         | 25,200.00        | 10,200.00         | 68.00 |
| 400-5105                       | SECRETARY'S SALARY            | 38,970.00         | 38,970.00        | 0.00              | 0.00  |
| 400-5107                       | SEASONAL SALARY               | 0.00              | 0.00             | 0.00              | 0.00  |
| 400-5150                       | LONGEVITY                     | 1,200.00          | 1,800.00         | 600.00            | 50.00 |
| 400-5201                       | SOCIAL SECURITY               | 8,133.00          | 8,362.00         | 229.00            | 2.82  |
| 400-5202                       | GROUP INSURANCE               | 19,606.00         | 19,606.00        | 0.00              | 0.00  |
| 400-5203                       | RETIREMENT                    | 13,820.00         | 14,210.00        | 390.00            | 2.82  |
| 400-5204                       | WORKERS' COMPENSATION         | 500.00            | 500.00           | 0.00              | 0.00  |
| 400-5206                       | UNEMPLOYMENT                  | 100.00            | 100.00           | 0.00              | 0.00  |
| -----                          |                               |                   |                  |                   |       |
| TOTAL PERSONAL SERVICES        | 141,263.00                    | 152,682.00        | 11,419.00        | 8.08              |       |
| OTHER SERVICES & CHARGES       |                               |                   |                  |                   |       |
| -----                          |                               |                   |                  |                   |       |
| 400-5420                       | TELECOMMUNICATIONS            | 240.00            | 240.00           | 0.00              | 0.00  |
| -----                          |                               |                   |                  |                   |       |
| TOTAL OTHER SERVICES & CHARGES | 240.00                        | 240.00            | 0.00             | 0.00              |       |
| TOTAL COUNTY JUDGE             | 141,503.00                    | 152,922.00        | 11,419.00        | 8.07              |       |
| =====                          |                               |                   |                  |                   |       |



C O C H R A N C O U N T Y  
 BUDGET COMPARISON REPORT  
 AS OF: SEPTEMBER 14TH, 2015

10 -GENERAL FUND

**COUNTY AND DISTRICT CLERK**

DEPARTMENT EXPENDITURES

|   | CURRENT<br>BUDGET          | ADOPTED<br>BUDGET | BUDGET<br>CHANGE  | PERCENT<br>CHANGE  |                |
|---|----------------------------|-------------------|-------------------|--------------------|----------------|
| <b>PERSONAL SERVICES</b>                  |                            |                   |                   |                    |                |
| 403-5101                                  | CLERK'S SALARY             | 44,964.00         | 44,964.00         | 0.00               | 0.00           |
| 403-5104                                  | DEPUTIES' SALARY           | 38,970.00         | 38,970.00         | 0.00               | 0.00           |
| 403-5107                                  | TEMPORARY OR EXTRA WAGES   | 15,000.00         | 15,000.00         | 0.00               | 0.00           |
| 403-5150                                  | LONGEVITY                  | 2,400.00          | 3,000.00          | 600.00             | 25.00          |
| 403-5201                                  | SOCIAL SECURITY            | 7,798.00          | 7,844.00          | 46.00              | 0.59           |
| 403-5202                                  | GROUP INSURANCE            | 19,606.00         | 19,606.00         | 0.00               | 0.00           |
| 403-5203                                  | RETIREMENT                 | 11,302.00         | 11,380.00         | 78.00              | 0.69           |
| 403-5204                                  | WORKERS' COMPENSATION      | 700.00            | 700.00            | 0.00               | 0.00           |
| 403-5206                                  | UNEMPLOYMENT               | 250.00            | 250.00            | 0.00               | 0.00           |
| <b>TOTAL PERSONAL SERVICES</b>            |                            | <b>140,990.00</b> | <b>141,714.00</b> | <b>724.00</b>      | <b>0.51</b>    |
| <b>SUPPLIES</b>                           |                            |                   |                   |                    |                |
| 403-5310                                  | OFFICE SUPPLIES            | 11,500.00         | 10,000.00         | ( 1,500.00)        | 13.04-         |
| 403-5311                                  | POSTAL EXPENSES            | 3,500.00          | 3,500.00          | 0.00               | 0.00           |
| <b>TOTAL SUPPLIES</b>                     |                            | <b>15,000.00</b>  | <b>13,500.00</b>  | <b>( 1,500.00)</b> | <b>10.00-</b>  |
| <b>OTHER SERVICES &amp; CHARGES</b>       |                            |                   |                   |                    |                |
| 403-5411                                  | MAINTENANCE CONTRACTS      | 12,000.00         | 12,000.00         | 0.00               | 0.00           |
| 403-5416                                  | FILMING & INDEXING         | 27,000.00         | 25,000.00         | ( 2,000.00)        | 7.41-          |
| 403-5416.001                              | ARCHIVE EXP - LGC 118.025  | 3,000.00          | 3,000.00          | 0.00               | 0.00           |
| 403-5420                                  | TELECOMMUNICATIONS         | 3,000.00          | 3,000.00          | 0.00               | 0.00           |
| 403-5425                                  | TRAVEL-IN COUNTY           | 600.00            | 600.00            | 0.00               | 0.00           |
| 403-5427                                  | CONTINUING EDUCATION       | 3,300.00          | 4,000.00          | 700.00             | 21.21          |
| 403-5451                                  | REPAIRS                    | 1,500.00          | 1,000.00          | ( 500.00)          | 33.33-         |
| 403-5480                                  | BONDS & NOTARY FEES        | 150.00            | 150.00            | 0.00               | 0.00           |
| 403-5481                                  | DUES AND REGISTRATION      | 600.00            | 600.00            | 0.00               | 0.00           |
| 403-5483                                  | ERRORS/OMISSIONS INSURANCE | 400.00            | 300.00            | ( 100.00)          | 25.00-         |
| <b>TOTAL OTHER SERVICES &amp; CHARGES</b> |                            | <b>51,550.00</b>  | <b>49,650.00</b>  | <b>( 1,900.00)</b> | <b>3.69-</b>   |
| <b>CAPITAL OUTLAY</b>                     |                            |                   |                   |                    |                |
| 403-5571                                  | CAPITAL OUTLAY             | 7,000.00          | 0.00              | ( 7,000.00)        | 100.00-        |
| <b>TOTAL CAPITAL OUTLAY</b>               |                            | <b>7,000.00</b>   | <b>0.00</b>       | <b>( 7,000.00)</b> | <b>100.00-</b> |
| <b>TOTAL COUNTY AND DISTRICT CLERK</b>    |                            | <b>214,540.00</b> | <b>204,864.00</b> | <b>( 9,676.00)</b> | <b>4.51-</b>   |

9-14-2015 01:41 PM

C O C H R A N C O U N T Y  
BUDGET COMPARISON REPORT  
AS OF: SEPTEMBER 14TH, 2015

10 -GENERAL FUND

**VETERANS' SERVICE OFFICER**

DEPARTMENT EXPENDITURES

|                                 | CURRENT<br>BUDGET             | ADOPTED<br>BUDGET | BUDGET<br>CHANGE | PERCENT<br>CHANGE |
|---------------------------------|-------------------------------|-------------------|------------------|-------------------|
| -----                           |                               |                   |                  |                   |
| PERSONAL SERVICES               |                               |                   |                  |                   |
| -----                           |                               |                   |                  |                   |
| 405-5102                        | COUNTY SERVICE OFFICER SALARY | 0.00              | 0.00             | 0.00              |
| 405-5107                        | TEMPORARY OR EXTRA WAGES      | 1,000.00          | 1,000.00         | 0.00              |
| 405-5150                        | LONGEVITY                     | 0.00              | 0.00             | 0.00              |
| 405-5201                        | SOCIAL SECURITY               | 77.00             | 77.00            | 0.00              |
| 405-5202                        | GROUP INSURANCE               | 0.00              | 0.00             | 0.00              |
| 405-5203                        | RETIREMENT                    | 130.00            | 130.00           | 0.00              |
| 405-5204                        | WORKERS' COMPENSATION         | 10.00             | 10.00            | 0.00              |
| 405-5206                        | UNEMPLOYMENT                  | 2.00              | 2.00             | 0.00              |
|                                 | -----                         | -----             | -----            | -----             |
| TOTAL PERSONAL SERVICES         | 1,219.00                      | 1,219.00          | 0.00             | 0.00              |
| SUPPLIES                        |                               |                   |                  |                   |
| -----                           |                               |                   |                  |                   |
| 405-5310                        | OFFICE SUPPLIES               | 1,000.00          | 1,000.00         | 0.00              |
| 405-5311                        | POSTAL EXPENSES               | 500.00            | 500.00           | 0.00              |
| 405-5330                        | FUEL AND OIL                  | 2,000.00          | 2,000.00         | 0.00              |
|                                 | -----                         | -----             | -----            | -----             |
| TOTAL SUPPLIES                  | 3,500.00                      | 3,500.00          | 0.00             | 0.00              |
| OTHER SERVICES & CHARGES        |                               |                   |                  |                   |
| -----                           |                               |                   |                  |                   |
| 405-5427                        | CONTINUING EDUCATION          | 1,000.00          | 1,000.00         | 0.00              |
| 405-5451                        | REPAIRS                       | 0.00              | 0.00             | 0.00              |
| 405-5481                        | DUES AND REGISTRATION         | 500.00            | 500.00           | 0.00              |
|                                 | -----                         | -----             | -----            | -----             |
| TOTAL OTHER SERVICES & CHARGES  | 1,500.00                      | 1,500.00          | 0.00             | 0.00              |
| TOTAL VETERANS' SERVICE OFFICER | 6,219.00                      | 6,219.00          | 0.00             | 0.00              |
|                                 | =====                         | =====             | =====            | =====             |

9-14-2015 01:41 PM

C O C H R A N C O U N T Y  
 BUDGET COMPARISON REPORT  
 AS OF: SEPTEMBER 14TH, 2015

10 -GENERAL FUND  
**NON-DEPARTMENTAL**

DEPARTMENT EXPENDITURES

|  | CURRENT<br>BUDGET | ADOPTED<br>BUDGET | BUDGET<br>CHANGE | PERCENT<br>CHANGE |
|--|-------------------|-------------------|------------------|-------------------|
| -----                                  |                   |                   |                  |                   |
| PERSONAL SERVICES                      |                   |                   |                  |                   |
| -----                                  |                   |                   |                  |                   |
| 409-5207 SUPPLEMENTAL DEATH BENEFITS   | 20,000.00         | 24,000.00         | 4,000.00         | 20.00             |
|  | -----             | -----             | -----            | -----             |
| TOTAL PERSONAL SERVICES                | 20,000.00         | 24,000.00         | 4,000.00         | 20.00             |
| SUPPLIES                               |                   |                   |                  |                   |
| -----                                  |                   |                   |                  |                   |
| 409-5300 COUNTY-WIDE SUPPLIES          | 6,000.00          | 6,000.00          | 0.00             | 0.00              |
| 409-5311 POSTAL EXPENSES               | 4,000.00          | 4,000.00          | 0.00             | 0.00              |
| 409-5334 OTHER SUPPLIES                | 200.00            | 200.00            | 0.00             | 0.00              |
|  | -----             | -----             | -----            | -----             |
| TOTAL SUPPLIES                         | 10,200.00         | 10,200.00         | 0.00             | 0.00              |
| OTHER SERVICES & CHARGES               |                   |                   |                  |                   |
| -----                                  |                   |                   |                  |                   |
| 409-5401 OUTSIDE AUDIT                 | 20,000.00         | 20,000.00         | 0.00             | 0.00              |
| 409-5405 MEDICAL-PATHOLOGY CONTRACT    | 500.00            | 500.00            | 0.00             | 0.00              |
| 409-5406 APPRAISAL DISTRICT            | 80,000.00         | 80,000.00         | 0.00             | 0.00              |
| 409-5407 TRAPPERS SERVICES             | 5,000.00          | 5,000.00          | 0.00             | 0.00              |
| 409-5411 MAINTENANCE CONTRACTS         | 30,000.00         | 30,000.00         | 0.00             | 0.00              |
| 409-5417 BANK CHARGES                  | 500.00            | 500.00            | 0.00             | 0.00              |
| 409-5420 TELECOMMUNICATIONS            | 4,000.00          | 4,000.00          | 0.00             | 0.00              |
| 409-5427 CONTINUING EDUCATION          | 500.00            | 500.00            | 0.00             | 0.00              |
| 409-5440 UTILITIES                     | 2,000.00          | 2,000.00          | 0.00             | 0.00              |
| 409-5451 REPAIRS                       | 10,000.00         | 10,000.00         | 0.00             | 0.00              |
| 409-5470 DONATION-SOIL & WATER CONSERV | 4,500.00          | 4,500.00          | 0.00             | 0.00              |
| 409-5480 BONDS & NOTARY FEES           | 400.00            | 400.00            | 0.00             | 0.00              |
| 409-5481 DUES AND REGISTRATION         | 500.00            | 500.00            | 0.00             | 0.00              |
| 409-5482 PROPERTY INSURANCE            | 35,000.00         | 35,000.00         | 0.00             | 0.00              |
| 409-5497 LIABILITY INSURANCE           | 50,000.00         | 50,000.00         | 0.00             | 0.00              |
| 409-5498 CLAIMS AND JUDGEMENTS         | 30,000.00         | 30,000.00         | 0.00             | 0.00              |
| 409-5499 MISCELLANEOUS                 | 20,000.00         | 20,000.00         | 0.00             | 0.00              |
|  | -----             | -----             | -----            | -----             |
| TOTAL OTHER SERVICES & CHARGES         | 292,900.00        | 292,900.00        | 0.00             | 0.00              |
| CAPITAL OUTLAY                         |                   |                   |                  |                   |
| -----                                  |                   |                   |                  |                   |
| 409-5571 CAPITAL OUTLAY                | 50,000.00         | 50,000.00         | 0.00             | 0.00              |
|  | -----             | -----             | -----            | -----             |
| TOTAL CAPITAL OUTLAY                   | 50,000.00         | 50,000.00         | 0.00             | 0.00              |
| TOTAL NON-DEPARTMENTAL                 | 373,100.00        | 377,100.00        | 4,000.00         | 1.07              |
|  | =====             | =====             | =====            | =====             |

9-14-2015 01:41 PM

C O C H R A N C O U N T Y  
BUDGET COMPARISON REPORT  
AS OF: SEPTEMBER 14TH, 2015

10 -GENERAL FUND

**COUNTY COURT**

DEPARTMENT EXPENDITURES

|                                   | CURRENT<br>BUDGET | ADOPTED<br>BUDGET | BUDGET<br>CHANGE | PERCENT<br>CHANGE |
|-----------------------------------|-------------------|-------------------|------------------|-------------------|
| -----                             |                   |                   |                  |                   |
| SUPPLIES                          |                   |                   |                  |                   |
| -----                             |                   |                   |                  |                   |
| 426-5310 OFFICE SUPPLIES          | 1,500.00          | 1,500.00          | 0.00             | 0.00              |
|                                   | -----             | -----             | -----            | -----             |
| TOTAL SUPPLIES                    | 1,500.00          | 1,500.00          | 0.00             | 0.00              |
| OTHER SERVICES & CHARGES          |                   |                   |                  |                   |
| -----                             |                   |                   |                  |                   |
| 426-5400 ATTORNEY AD LITEM        | 14,000.00         | 14,000.00         | 0.00             | 0.00              |
| 426-5410 COURT REPORTING SERVICES | 3,000.00          | 3,000.00          | 0.00             | 0.00              |
| 426-5481 DUES AND REGISTRATION    | 500.00            | 500.00            | 0.00             | 0.00              |
| 426-5492 PETIT JURY               | 2,500.00          | 2,500.00          | 0.00             | 0.00              |
| 426-5499 MISCELLANEOUS            | 1,500.00          | 1,500.00          | 0.00             | 0.00              |
|                                   | -----             | -----             | -----            | -----             |
| TOTAL OTHER SERVICES & CHARGES    | 21,500.00         | 21,500.00         | 0.00             | 0.00              |
| TOTAL COUNTY COURT                | 23,000.00         | 23,000.00         | 0.00             | 0.00              |
|                                   | =====             | =====             | =====            | =====             |

C O C H R A N C O U N T Y  
 BUDGET COMPARISON REPORT  
 AS OF: SEPTEMBER 14TH, 2015

10 -GENERAL FUND  
**DISTRICT COURT**

DEPARTMENT EXPENDITURES

|                                |                                | CURRENT<br>BUDGET | ADOPTED<br>BUDGET | BUDGET<br>CHANGE | PERCENT<br>CHANGE |
|--------------------------------|--------------------------------|-------------------|-------------------|------------------|-------------------|
| -----                          |                                |                   |                   |                  |                   |
| PERSONAL SERVICES              |                                |                   |                   |                  |                   |
| -----                          |                                |                   |                   |                  |                   |
| 435-5105                       | SALARY-DIST. COURT COORDINATOR | 6,756.00          | 6,756.00          | 0.00             | 0.00              |
| 435-5110                       | SALARY-COURT REPORTER          | 7,647.00          | 7,647.00          | 0.00             | 0.00              |
| 435-5201                       | SOCIAL SECURITY                | 1,512.00          | 1,535.00          | 23.00            | 1.52              |
| 435-5202                       | GROUP INSURANCE                | 500.00            | 0.00              | ( 500.00)        | 100.00-           |
| 435-5203                       | RETIREMENT                     | 2,569.00          | 2,609.00          | 40.00            | 1.56              |
| 435-5204                       | WORKERS' COMPENSATION          | 110.00            | 110.00            | 0.00             | 0.00              |
| 435-5206                       | UNEMPLOYMENT                   | 60.00             | 60.00             | 0.00             | 0.00              |
| 435-5208                       | OTHER COMPENSATION             | 5,353.00          | 5,353.00          | 0.00             | 0.00              |
|                                |                                | -----             | -----             | -----            | -----             |
| TOTAL PERSONAL SERVICES        |                                | 24,507.00         | 24,070.00         | ( 437.00)        | 1.78-             |
|                                |                                |                   |                   |                  |                   |
| SUPPLIES                       |                                |                   |                   |                  |                   |
| -----                          |                                |                   |                   |                  |                   |
| 435-5310                       | OFFICE SUPPLIES                | 500.00            | 500.00            | 0.00             | 0.00              |
| 435-5311                       | POSTAL EXPENSES                | 10.00             | 10.00             | 0.00             | 0.00              |
|                                |                                | -----             | -----             | -----            | -----             |
| TOTAL SUPPLIES                 |                                | 510.00            | 510.00            | 0.00             | 0.00              |
|                                |                                |                   |                   |                  |                   |
| OTHER SERVICES & CHARGES       |                                |                   |                   |                  |                   |
| -----                          |                                |                   |                   |                  |                   |
| 435-5400                       | ATTORNEY AD LITEM              | 21,000.00         | 21,000.00         | 0.00             | 0.00              |
| 435-5410                       | COURT REPORTER SERVICES        | 500.00            | 500.00            | 0.00             | 0.00              |
| 435-5415                       | ASSESSMENT                     | 500.00            | 350.00            | ( 150.00)        | 30.00-            |
| 435-5420                       | TELECOMMUNICATIONS             | 2,800.00          | 3,600.00          | 800.00           | 28.57             |
| 435-5427                       | CONTINUING EDUCATION           | 0.00              | 0.00              | 0.00             | 0.00              |
| 435-5491                       | GRAND JURY                     | 4,000.00          | 4,000.00          | 0.00             | 0.00              |
| 435-5492                       | PETIT JURY                     | 6,000.00          | 6,000.00          | 0.00             | 0.00              |
| 435-5497                       | LIABILITY INSURANCE            | 1,500.00          | 1,800.00          | 300.00           | 20.00             |
| 435-5499                       | MISCELLANEOUS                  | 1,800.00          | 2,100.00          | 300.00           | 16.67             |
|                                |                                | -----             | -----             | -----            | -----             |
| TOTAL OTHER SERVICES & CHARGES |                                | 38,100.00         | 39,350.00         | 1,250.00         | 3.28              |
|                                |                                |                   |                   |                  |                   |
| CAPITAL OUTLAY                 |                                |                   |                   |                  |                   |
| -----                          |                                |                   |                   |                  |                   |
| 435-5571                       | CAPITAL OUTLAY                 | 0.00              | 0.00              | 0.00             | 0.00              |
|                                |                                | -----             | -----             | -----            | -----             |
| TOTAL CAPITAL OUTLAY           |                                | 0.00              | 0.00              | 0.00             | 0.00              |
| TOTAL DISTRICT COURT           |                                | 63,117.00         | 63,930.00         | 813.00           | 1.29              |
|                                |                                | =====             | =====             | =====            | =====             |

C O C H R A N C O U N T Y  
 BUDGET COMPARISON REPORT  
 AS OF: SEPTEMBER 14TH, 2015

10 -GENERAL FUND

**JUSTICE OF THE PEACE**

DEPARTMENT EXPENDITURES

|                                | CURRENT<br>BUDGET        | ADOPTED<br>BUDGET | BUDGET<br>CHANGE | PERCENT<br>CHANGE |       |
|--------------------------------|--------------------------|-------------------|------------------|-------------------|-------|
| -----                          |                          |                   |                  |                   |       |
| PERSONAL SERVICES              |                          |                   |                  |                   |       |
| -----                          |                          |                   |                  |                   |       |
| 455-5101                       | JUSTICE OF PEACE SALARY  | 44,964.00         | 44,964.00        | 0.00              | 0.00  |
| 455-5103                       | COURT CLERK              | 0.00              | 0.00             | 0.00              | 0.00  |
| 455-5107                       | TEMPORARY OR EXTRA WAGES | 5,000.00          | 8,000.00         | 3,000.00          | 60.00 |
| 455-5150                       | LONGEVITY                | 600.00            | 600.00           | 0.00              | 0.00  |
| 455-5201                       | SOCIAL SECURITY          | 3,869.00          | 4,098.00         | 229.00            | 5.92  |
| 455-5202                       | GROUP INSURANCE          | 9,803.00          | 9,803.00         | 0.00              | 0.00  |
| 455-5203                       | RETIREMENT               | 5,924.00          | 6,314.00         | 390.00            | 6.58  |
| 455-5204                       | WORKERS' COMPENSATION    | 320.00            | 320.00           | 0.00              | 0.00  |
| 455-5206                       | UNEMPLOYMENT             | 20.00             | 20.00            | 0.00              | 0.00  |
|                                |                          | -----             | -----            | -----             | ----- |
| TOTAL PERSONAL SERVICES        |                          | 70,500.00         | 74,119.00        | 3,619.00          | 5.13  |
|                                |                          |                   |                  |                   |       |
| SUPPLIES                       |                          |                   |                  |                   |       |
| -----                          |                          |                   |                  |                   |       |
| 455-5310                       | OFFICE SUPPLIES          | 5,000.00          | 5,000.00         | 0.00              | 0.00  |
| 455-5311                       | POSTAL EXPENSES          | 500.00            | 500.00           | 0.00              | 0.00  |
|                                |                          | -----             | -----            | -----             | ----- |
| TOTAL SUPPLIES                 |                          | 5,500.00          | 5,500.00         | 0.00              | 0.00  |
|                                |                          |                   |                  |                   |       |
| OTHER SERVICES & CHARGES       |                          |                   |                  |                   |       |
| -----                          |                          |                   |                  |                   |       |
| 455-5405                       | AUTOPSY                  | 30,000.00         | 30,000.00        | 0.00              | 0.00  |
| 455-5411                       | MAINTENANCE CONTRACTS    | 5,000.00          | 5,000.00         | 0.00              | 0.00  |
| 455-5420                       | TELECOMMUNICATIONS       | 1,000.00          | 1,000.00         | 0.00              | 0.00  |
| 455-5427                       | CONTINUING EDUCATION     | 3,000.00          | 3,000.00         | 0.00              | 0.00  |
| 455-5451                       | REPAIRS                  | 1,000.00          | 1,000.00         | 0.00              | 0.00  |
| 455-5480                       | BONDS & NOTARY FEES      | 100.00            | 100.00           | 0.00              | 0.00  |
| 455-5481                       | DUES AND REGISTRATION    | 100.00            | 100.00           | 0.00              | 0.00  |
| 455-5492                       | PETIT JURY               | 500.00            | 500.00           | 0.00              | 0.00  |
| 455-5499                       | MISCELLANEOUS            | 500.00            | 500.00           | 0.00              | 0.00  |
|                                |                          | -----             | -----            | -----             | ----- |
| TOTAL OTHER SERVICES & CHARGES |                          | 41,200.00         | 41,200.00        | 0.00              | 0.00  |
|                                |                          |                   |                  |                   |       |
| CAPITAL OUTLAY                 |                          |                   |                  |                   |       |
| -----                          |                          |                   |                  |                   |       |
| 455-5571                       | CAPITAL OUTLAY           | 0.00              | 0.00             | 0.00              | 0.00  |
|                                |                          | -----             | -----            | -----             | ----- |
| TOTAL CAPITAL OUTLAY           |                          | 0.00              | 0.00             | 0.00              | 0.00  |
| TOTAL JUSTICE OF THE PEACE     |                          | 117,200.00        | 120,819.00       | 3,619.00          | 3.09  |
|                                |                          | =====             | =====            | =====             | ===== |

C O C H R A N C O U N T Y  
 BUDGET COMPARISON REPORT  
 AS OF: SEPTEMBER 14TH, 2015

10 -GENERAL FUND  
**COUNTY ATTORNEY**

DEPARTMENT EXPENDITURES

|                                | CURRENT<br>BUDGET            | ADOPTED<br>BUDGET | BUDGET<br>CHANGE | PERCENT<br>CHANGE |       |
|--------------------------------|------------------------------|-------------------|------------------|-------------------|-------|
| -----                          |                              |                   |                  |                   |       |
| PERSONAL SERVICES              |                              |                   |                  |                   |       |
| -----                          |                              |                   |                  |                   |       |
| 475-5101                       | COUNTY ATTORNEY'S SALARY     | 44,964.00         | 44,964.00        | 0.00              | 0.00  |
| 475-5101.001                   | STATE SALARY SUPPLEMENT-C.A. | 35,000.00         | 35,000.00        | 0.00              | 0.00  |
| 475-5105                       | SECRETARY'S SALARY           | 38,970.00         | 38,970.00        | 0.00              | 0.00  |
| 475-5107                       | TEMPORARY OR EXTRA WAGES     | 2,900.00          | 2,900.00         | 0.00              | 0.00  |
| 475-5150                       | LONGEVITY                    | 3,000.00          | 3,000.00         | 0.00              | 0.00  |
| 475-5201                       | SOCIAL SECURITY              | 9,587.00          | 9,587.00         | 0.00              | 0.00  |
| 475-5202                       | GROUP INSURANCE              | 19,606.00         | 19,606.00        | 0.00              | 0.00  |
| 475-5203                       | RETIREMENT                   | 15,914.00         | 15,914.00        | 0.00              | 0.00  |
| 475-5204                       | WORKERS' COMPENSATION        | 400.00            | 400.00           | 0.00              | 0.00  |
| 475-5206                       | UNEMPLOYMENT                 | 100.00            | 100.00           | 0.00              | 0.00  |
|                                |                              | -----             | -----            | -----             | ----- |
| TOTAL PERSONAL SERVICES        | 170,441.00                   | 170,441.00        | 0.00             | 0.00              |       |
| SUPPLIES                       |                              |                   |                  |                   |       |
| -----                          |                              |                   |                  |                   |       |
| 475-5310                       | OFFICE SUPPLIES              | 1,200.00          | 1,200.00         | 0.00              | 0.00  |
| 475-5311                       | POSTAL EXPENSES              | 600.00            | 600.00           | 0.00              | 0.00  |
|                                |                              | -----             | -----            | -----             | ----- |
| TOTAL SUPPLIES                 | 1,800.00                     | 1,800.00          | 0.00             | 0.00              |       |
| OTHER SERVICES & CHARGES       |                              |                   |                  |                   |       |
| -----                          |                              |                   |                  |                   |       |
| 475-5411                       | MAINTENANCE CONTRACTS        | 300.00            | 300.00           | 0.00              | 0.00  |
| 475-5420                       | TELECOMMUNICATIONS           | 2,600.00          | 2,600.00         | 0.00              | 0.00  |
| 475-5427                       | CONTINUING EDUCATION         | 500.00            | 500.00           | 0.00              | 0.00  |
| 475-5480                       | BONDS & NOTARY FEES          | 200.00            | 200.00           | 0.00              | 0.00  |
| 475-5481                       | DUES AND REGISTRATION        | 300.00            | 300.00           | 0.00              | 0.00  |
|                                |                              | -----             | -----            | -----             | ----- |
| TOTAL OTHER SERVICES & CHARGES | 3,900.00                     | 3,900.00          | 0.00             | 0.00              |       |
| CAPITAL OUTLAY                 |                              |                   |                  |                   |       |
| -----                          |                              |                   |                  |                   |       |
| 475-5571                       | CAPITAL OUTLAY               | 0.00              | 0.00             | 0.00              | 0.00  |
| 475-5590                       | LAW LIBRARY MTRLS/UPDATES    | 9,700.00          | 9,700.00         | 0.00              | 0.00  |
|                                |                              | -----             | -----            | -----             | ----- |
| TOTAL CAPITAL OUTLAY           | 9,700.00                     | 9,700.00          | 0.00             | 0.00              |       |
| TOTAL COUNTY ATTORNEY          | 185,841.00                   | 185,841.00        | 0.00             | 0.00              |       |
|                                |                              | =====             | =====            | =====             | ===== |

9-14-2015 01:41 PM

C O C H R A N C O U N T Y  
 BUDGET COMPARISON REPORT  
 AS OF: SEPTEMBER 14TH, 2015

10 -GENERAL FUND

**DISTRICT ATTORNEY**

DEPARTMENT EXPENDITURES

|                                | CURRENT<br>BUDGET            | ADOPTED<br>BUDGET | BUDGET<br>CHANGE | PERCENT<br>CHANGE |       |
|--------------------------------|------------------------------|-------------------|------------------|-------------------|-------|
| -----                          |                              |                   |                  |                   |       |
| PERSONAL SERVICES              |                              |                   |                  |                   |       |
| -----                          |                              |                   |                  |                   |       |
| 476-5101                       | DISTRICT ATTORNEY'S SALARY   | 5,953.00          | 5,953.00         | 0.00              | 0.00  |
| 476-5101.001                   | STATE SAL SUPPL - DIST ATT'Y | 0.00              | 3,640.00         | 3,640.00          | 0.00  |
| 476-5103                       | ASS'T DISTRICT ATT'Y SALARY  | 0.00              | 0.00             | 0.00              | 0.00  |
| 476-5104                       | SPECIAL INVESTIGATOR SALARY  | 8,009.00          | 8,009.00         | 0.00              | 0.00  |
| 476-5105                       | SECRETARY'S SALARY           | 6,264.00          | 6,264.00         | 0.00              | 0.00  |
| 476-5107                       | TEMPORARY OR EXTRA WAGES     | 1,000.00          | 1,000.00         | 0.00              | 0.00  |
| 476-5201                       | SOCIAL SECURITY              | 1,663.00          | 1,942.00         | 279.00            | 16.78 |
| 476-5202                       | GROUP INSURANCE              | 600.00            | 600.00           | 0.00              | 0.00  |
| 476-5203                       | RETIREMENT                   | 2,695.00          | 3,169.00         | 474.00            | 17.59 |
| 476-5204                       | WORKERS' COMPENSATION        | 566.00            | 568.00           | 2.00              | 0.35  |
| 476-5206                       | UNEMPLOYMENT                 | 65.00             | 65.00            | 0.00              | 0.00  |
| -----                          |                              |                   |                  |                   |       |
| TOTAL PERSONAL SERVICES        | 26,815.00                    | 31,210.00         | 4,395.00         | 16.39             |       |
|                                |                              |                   |                  |                   |       |
| SUPPLIES                       |                              |                   |                  |                   |       |
| -----                          |                              |                   |                  |                   |       |
| 476-5310                       | OFFICE SUPPLIES              | 400.00            | 400.00           | 0.00              | 0.00  |
| -----                          |                              |                   |                  |                   |       |
| TOTAL SUPPLIES                 | 400.00                       | 400.00            | 0.00             | 0.00              |       |
|                                |                              |                   |                  |                   |       |
| OTHER SERVICES & CHARGES       |                              |                   |                  |                   |       |
| -----                          |                              |                   |                  |                   |       |
| 476-5425                       | D A INVESTIGATOR TRAVEL      | 500.00            | 500.00           | 0.00              | 0.00  |
| 476-5427                       | CONTINUING EDUCATION         | 150.00            | 150.00           | 0.00              | 0.00  |
| 476-5481                       | DUES AND REGISTRATION        | 32.00             | 32.00            | 0.00              | 0.00  |
| 476-5497                       | PROFESSIONAL LIABILITY INS.  | 153.00            | 153.00           | 0.00              | 0.00  |
| 476-5499                       | MISCELLANEOUS                | 50.00             | 50.00            | 0.00              | 0.00  |
| -----                          |                              |                   |                  |                   |       |
| TOTAL OTHER SERVICES & CHARGES | 885.00                       | 885.00            | 0.00             | 0.00              |       |
|                                |                              |                   |                  |                   |       |
| CAPITAL OUTLAY                 |                              |                   |                  |                   |       |
| -----                          |                              |                   |                  |                   |       |
| 476-5571                       | CAPITAL OUTLAY               | 0.00              | 0.00             | 0.00              | 0.00  |
| -----                          |                              |                   |                  |                   |       |
| TOTAL CAPITAL OUTLAY           | 0.00                         | 0.00              | 0.00             | 0.00              |       |
|                                |                              |                   |                  |                   |       |
| TOTAL DISTRICT ATTORNEY        | 28,100.00                    | 32,495.00         | 4,395.00         | 15.64             |       |
| =====                          |                              |                   |                  |                   |       |



C O C H R A N C O U N T Y  
 BUDGET COMPARISON REPORT  
 AS OF: SEPTEMBER 14TH, 2015

10 -GENERAL FUND

**ELECTIONS**

DEPARTMENT EXPENDITURES

|                                | CURRENT<br>BUDGET             | ADOPTED<br>BUDGET | BUDGET<br>CHANGE | PERCENT<br>CHANGE |        |
|--------------------------------|-------------------------------|-------------------|------------------|-------------------|--------|
| -----                          |                               |                   |                  |                   |        |
| PERSONAL SERVICES              |                               |                   |                  |                   |        |
| -----                          |                               |                   |                  |                   |        |
| 490-5102                       | ELECTION SALARIES             | 6,000.00          | 6,000.00         | 0.00              | 0.00   |
| 490-5102.001                   | ELECTIONS ADMINISTRATOR WAGES | 16,800.00         | 20,000.00        | 3,200.00          | 19.05  |
| 490-5107                       | TEMPORARY OR EXTRA WAGES      | 3,400.00          | 3,400.00         | 0.00              | 0.00   |
| 490-5150                       | LONGEVITY                     | 0.00              | 0.00             | 0.00              | 0.00   |
| 490-5201                       | SOCIAL SECURITY               | 200.00            | 200.00           | 0.00              | 0.00   |
| 490-5201.001                   | SOCIAL SECURITY FICA          | 2,005.00          | 2,005.00         | 0.00              | 0.00   |
| 490-5203                       | RETIREMENT                    | 200.00            | 200.00           | 0.00              | 0.00   |
| 490-5203.001                   | RETIREMENT                    | 2,626.00          | 2,626.00         | 0.00              | 0.00   |
| 490-5204                       | WORKERS' COMPENSATION         | 100.00            | 100.00           | 0.00              | 0.00   |
| 490-5206                       | UNEMPLOYMENT                  | 50.00             | 50.00            | 0.00              | 0.00   |
| -----                          |                               |                   |                  |                   |        |
| TOTAL PERSONAL SERVICES        | 31,381.00                     | 34,581.00         | 3,200.00         | 10.20             |        |
| SUPPLIES                       |                               |                   |                  |                   |        |
| -----                          |                               |                   |                  |                   |        |
| 490-5310                       | OFFICE SUPPLIES               | 6,000.00          | 5,000.00         | ( 1,000.00)       | 16.67- |
| 490-5311                       | POSTAL EXPENSES               | 3,000.00          | 3,500.00         | 500.00            | 16.67  |
| 490-5335                       | ELECTION SUPPLIES             | 7,000.00          | 9,000.00         | 2,000.00          | 28.57  |
| -----                          |                               |                   |                  |                   |        |
| TOTAL SUPPLIES                 | 16,000.00                     | 17,500.00         | 1,500.00         | 9.38              |        |
| OTHER SERVICES & CHARGES       |                               |                   |                  |                   |        |
| -----                          |                               |                   |                  |                   |        |
| 490-5411                       | MAINTENANCE CONTRACTS         | 6,000.00          | 6,000.00         | 0.00              | 0.00   |
| 490-5420                       | TELECOMMUNICATIONS            | 2,000.00          | 2,000.00         | 0.00              | 0.00   |
| 490-5425                       | TRAVEL-IN COUNTY(DOCUMENTED)  | 600.00            | 750.00           | 150.00            | 25.00  |
| 490-5427                       | CONTINUING EDUCATION          | 3,500.00          | 3,500.00         | 0.00              | 0.00   |
| 490-5480                       | BONDS & NOTARY FEES           | 200.00            | 200.00           | 0.00              | 0.00   |
| 490-5498                       | VOTER ENHANCEMENT             | 2,500.00          | 2,500.00         | 0.00              | 0.00   |
| -----                          |                               |                   |                  |                   |        |
| TOTAL OTHER SERVICES & CHARGES | 14,800.00                     | 14,950.00         | 150.00           | 1.01              |        |
| CAPITAL OUTLAY                 |                               |                   |                  |                   |        |
| -----                          |                               |                   |                  |                   |        |
| 490-5571                       | CAPITAL OUTLAY                | 0.00              | 0.00             | 0.00              | 0.00   |
| -----                          |                               |                   |                  |                   |        |
| TOTAL CAPITAL OUTLAY           | 0.00                          | 0.00              | 0.00             | 0.00              |        |
| TOTAL ELECTIONS                | 62,181.00                     | 67,031.00         | 4,850.00         | 7.80              |        |
| =====                          |                               |                   |                  |                   |        |

C O C H R A N C O U N T Y  
 BUDGET COMPARISON REPORT  
 AS OF: SEPTEMBER 14TH, 2015

10 -GENERAL FUND  
**COUNTY AUDITOR**

DEPARTMENT EXPENDITURES

|                                | CURRENT<br>BUDGET           | ADOPTED<br>BUDGET | BUDGET<br>CHANGE | PERCENT<br>CHANGE |        |
|--------------------------------|-----------------------------|-------------------|------------------|-------------------|--------|
| -----                          |                             |                   |                  |                   |        |
| PERSONAL SERVICES              |                             |                   |                  |                   |        |
| -----                          |                             |                   |                  |                   |        |
| 495-5102                       | COUNTY AUDITOR SALARY       | 44,964.00         | 44,964.00        | 0.00              | 0.00   |
| 495-5103                       | ASS'T COUNTY AUDITOR SALARY | 38,970.00         | 38,970.00        | 0.00              | 0.00   |
| 495-5107                       | TEMPORARY OR EXTRA          | 1,000.00          | 4,000.00         | 3,000.00          | 300.00 |
| 495-5150                       | LONGEVITY                   | 2,400.00          | 3,000.00         | 600.00            | 25.00  |
| 495-5201                       | SOCIAL SECURITY             | 6,819.00          | 7,095.00         | 276.00            | 4.05   |
| 495-5202                       | GROUP INSURANCE             | 19,606.00         | 19,606.00        | 0.00              | 0.00   |
| 495-5203                       | RETIREMENT                  | 11,458.00         | 11,946.00        | 488.00            | 4.26   |
| 495-5204                       | WORKERS' COMPENSATION       | 400.00            | 400.00           | 0.00              | 0.00   |
| 495-5206                       | UNEMPLOYMENT                | 190.00            | 190.00           | 0.00              | 0.00   |
| -----                          |                             |                   |                  |                   |        |
| TOTAL PERSONAL SERVICES        | 125,807.00                  | 130,171.00        | 4,364.00         | 3.47              |        |
| SUPPLIES                       |                             |                   |                  |                   |        |
| -----                          |                             |                   |                  |                   |        |
| 495-5310                       | OFFICE SUPPLIES             | 6,000.00          | 6,000.00         | 0.00              | 0.00   |
| 495-5311                       | POSTAL EXPENSES             | 500.00            | 500.00           | 0.00              | 0.00   |
| -----                          |                             |                   |                  |                   |        |
| TOTAL SUPPLIES                 | 6,500.00                    | 6,500.00          | 0.00             | 0.00              |        |
| OTHER SERVICES & CHARGES       |                             |                   |                  |                   |        |
| -----                          |                             |                   |                  |                   |        |
| 495-5411                       | MAINTENANCE CONTRACTS       | 300.00            | 300.00           | 0.00              | 0.00   |
| 495-5420                       | TELECOMMUNICATIONS          | 1,500.00          | 1,500.00         | 0.00              | 0.00   |
| 495-5425                       | TRAVEL-IN-COUNTY            | 1,800.00          | 1,800.00         | 0.00              | 0.00   |
| 495-5427                       | CONTINUING EDUCATION        | 2,100.00          | 2,100.00         | 0.00              | 0.00   |
| 495-5451                       | REPAIRS                     | 300.00            | 300.00           | 0.00              | 0.00   |
| 495-5480                       | BONDS & NOTARY FEES         | 50.00             | 50.00            | 0.00              | 0.00   |
| 495-5481                       | DUES AND REGISTRATION       | 550.00            | 550.00           | 0.00              | 0.00   |
| -----                          |                             |                   |                  |                   |        |
| TOTAL OTHER SERVICES & CHARGES | 6,600.00                    | 6,600.00          | 0.00             | 0.00              |        |
| CAPITAL OUTLAY                 |                             |                   |                  |                   |        |
| -----                          |                             |                   |                  |                   |        |
| 495-5571                       | CAPITAL OUTLAY              | 0.00              | 0.00             | 0.00              | 0.00   |
| -----                          |                             |                   |                  |                   |        |
| TOTAL CAPITAL OUTLAY           | 0.00                        | 0.00              | 0.00             | 0.00              |        |
| TOTAL COUNTY AUDITOR           | 138,907.00                  | 143,271.00        | 4,364.00         | 3.14              |        |
| =====                          |                             |                   |                  |                   |        |

C O C H R A N C O U N T Y  
 BUDGET COMPARISON REPORT  
 AS OF: SEPTEMBER 14TH, 2015

10 -GENERAL FUND  
**COUNTY TREASURER**

DEPARTMENT EXPENDITURES

|                                |                          | CURRENT<br>BUDGET | ADOPTED<br>BUDGET | BUDGET<br>CHANGE | PERCENT<br>CHANGE |
|--------------------------------|--------------------------|-------------------|-------------------|------------------|-------------------|
| -----                          |                          |                   |                   |                  |                   |
| PERSONAL SERVICES              |                          |                   |                   |                  |                   |
| -----                          |                          |                   |                   |                  |                   |
| 497-5101                       | COUNTY TREASURER SALARY  | 44,964.00         | 44,964.00         | 0.00             | 0.00              |
| 497-5104                       | DEPUTIES' SALARIES       | 0.00              | 0.00              | 0.00             | 0.00              |
| 497-5107                       | TEMPORARY OR EXTRA WAGES | 38,970.00         | 38,970.00         | 0.00             | 0.00              |
| 497-5150                       | LONGEVITY PAY            | 2,400.00          | 2,400.00          | 0.00             | 0.00              |
| 497-5201                       | SOCIAL SECURITY          | 6,651.00          | 6,651.00          | 0.00             | 0.00              |
| 497-5202                       | GROUP INSURANCE          | 19,606.00         | 19,606.00         | 0.00             | 0.00              |
| 497-5203                       | RETIREMENT               | 11,302.00         | 11,302.00         | 0.00             | 0.00              |
| 497-5204                       | WORKERS' COMPENSATION    | 250.00            | 250.00            | 0.00             | 0.00              |
| 497-5206                       | UNEMPLOYMENT             | 75.00             | 75.00             | 0.00             | 0.00              |
|                                |                          | -----             | -----             | -----            | -----             |
| TOTAL PERSONAL SERVICES        |                          | 124,218.00        | 124,218.00        | 0.00             | 0.00              |
| SUPPLIES                       |                          |                   |                   |                  |                   |
| -----                          |                          |                   |                   |                  |                   |
| 497-5310                       | OFFICE SUPPLIES          | 6,900.00          | 6,900.00          | 0.00             | 0.00              |
| 497-5311                       | POSTAL EXPENSES          | 1,400.00          | 1,400.00          | 0.00             | 0.00              |
|                                |                          | -----             | -----             | -----            | -----             |
| TOTAL SUPPLIES                 |                          | 8,300.00          | 8,300.00          | 0.00             | 0.00              |
| OTHER SERVICES & CHARGES       |                          |                   |                   |                  |                   |
| -----                          |                          |                   |                   |                  |                   |
| 497-5411                       | MAINTENANCE CONTRACTS    | 300.00            | 300.00            | 0.00             | 0.00              |
| 497-5420                       | TELECOMMUNICATIONS       | 750.00            | 750.00            | 0.00             | 0.00              |
| 497-5425                       | TRAVEL IN-COUNTY         | 600.00            | 600.00            | 0.00             | 0.00              |
| 497-5427                       | CONTINUING EDUCATION     | 3,700.00          | 3,700.00          | 0.00             | 0.00              |
| 497-5451                       | REPAIRS                  | 200.00            | 200.00            | 0.00             | 0.00              |
| 497-5480                       | BONDS & NOTARY FEES      | 250.00            | 250.00            | 0.00             | 0.00              |
| 497-5481                       | DUES AND REGISTRATION    | 650.00            | 650.00            | 0.00             | 0.00              |
|                                |                          | -----             | -----             | -----            | -----             |
| TOTAL OTHER SERVICES & CHARGES |                          | 6,450.00          | 6,450.00          | 0.00             | 0.00              |
| CAPITAL OUTLAY                 |                          |                   |                   |                  |                   |
| -----                          |                          |                   |                   |                  |                   |
| 497-5571                       | CAPITAL OUTLAY           | 0.00              | 0.00              | 0.00             | 0.00              |
|                                |                          | -----             | -----             | -----            | -----             |
| TOTAL CAPITAL OUTLAY           |                          | 0.00              | 0.00              | 0.00             | 0.00              |
| TOTAL COUNTY TREASURER         |                          | 138,968.00        | 138,968.00        | 0.00             | 0.00              |
|                                |                          | =====             | =====             | =====            | =====             |

C O C H R A N C O U N T Y  
 BUDGET COMPARISON REPORT  
 AS OF: SEPTEMBER 14TH, 2015

10 -GENERAL FUND

**TAX ASSESSOR & COLLECTOR**

DEPARTMENT EXPENDITURES

|                                | CURRENT<br>BUDGET        | ADOPTED<br>BUDGET | BUDGET<br>CHANGE | PERCENT<br>CHANGE |        |
|--------------------------------|--------------------------|-------------------|------------------|-------------------|--------|
| -----                          |                          |                   |                  |                   |        |
| PERSONAL SERVICES              |                          |                   |                  |                   |        |
| -----                          |                          |                   |                  |                   |        |
| 499-5101                       | TAX COLLECTOR'S SALARY   | 44,964.00         | 44,964.00        | 0.00              | 0.00   |
| 499-5104                       | DEPUTIES' SALARIES       | 76,779.00         | 76,779.00        | 0.00              | 0.00   |
| 499-5107                       | TEMPORARY OR EXTRA WAGES | 8,200.00          | 4,000.00         | ( 4,200.00)       | 51.22- |
| 499-5150                       | LONGEVITY                | 3,600.00          | 4,200.00         | 600.00            | 16.67  |
| 499-5201                       | SOCIAL SECURITY          | 10,217.00         | 9,941.00         | ( 276.00)         | 2.70-  |
| 499-5202                       | GROUP INSURANCE          | 29,409.00         | 29,409.00        | 0.00              | 0.00   |
| 499-5203                       | RETIREMENT               | 16,295.00         | 15,827.00        | ( 468.00)         | 2.87-  |
| 499-5204                       | WORKERS' COMPENSATION    | 600.00            | 600.00           | 0.00              | 0.00   |
| 499-5206                       | UNEMPLOYMENT             | 250.00            | 250.00           | 0.00              | 0.00   |
| -----                          |                          |                   |                  |                   |        |
| TOTAL PERSONAL SERVICES        | 190,314.00               | 185,970.00        | ( 4,344.00)      | 2.28-             |        |
| SUPPLIES                       |                          |                   |                  |                   |        |
| -----                          |                          |                   |                  |                   |        |
| 499-5310                       | OFFICE SUPPLIES          | 5,000.00          | 6,000.00         | 1,000.00          | 20.00  |
| 499-5311                       | POSTAL EXPENSES          | 2,000.00          | 4,500.00         | 2,500.00          | 125.00 |
| -----                          |                          |                   |                  |                   |        |
| TOTAL SUPPLIES                 | 7,000.00                 | 10,500.00         | 3,500.00         | 50.00             |        |
| OTHER SERVICES & CHARGES       |                          |                   |                  |                   |        |
| -----                          |                          |                   |                  |                   |        |
| 499-5408                       | TAX ROLL                 | 10,000.00         | 8,000.00         | ( 2,000.00)       | 20.00- |
| 499-5411                       | MAINTENANCE CONTRACTS    | 27,000.00         | 29,000.00        | 2,000.00          | 7.41   |
| 499-5420                       | TELECOMMUNICATIONS       | 4,000.00          | 5,000.00         | 1,000.00          | 25.00  |
| 499-5427                       | CONTINUING EDUCATION     | 6,000.00          | 4,000.00         | ( 2,000.00)       | 33.33- |
| 499-5451                       | REPAIR                   | 1,000.00          | 1,000.00         | 0.00              | 0.00   |
| 499-5480                       | BONDS & NOTARY FEES      | 675.00            | 1,000.00         | 325.00            | 48.15  |
| 499-5481                       | DUES AND REGISTRATION    | 1,000.00          | 1,000.00         | 0.00              | 0.00   |
| 499-5499                       | MISCELLANEOUS            | 500.00            | 500.00           | 0.00              | 0.00   |
| -----                          |                          |                   |                  |                   |        |
| TOTAL OTHER SERVICES & CHARGES | 50,175.00                | 49,500.00         | ( 675.00)        | 1.35-             |        |
| CAPITAL OUTLAY                 |                          |                   |                  |                   |        |
| -----                          |                          |                   |                  |                   |        |
| 499-5571                       | CAPITAL OUTLAY           | 0.00              | 0.00             | 0.00              | 0.00   |
| -----                          |                          |                   |                  |                   |        |
| TOTAL CAPITAL OUTLAY           | 0.00                     | 0.00              | 0.00             | 0.00              |        |
| TOTAL TAX ASSESSOR & COLLECTOR | 247,489.00               | 245,970.00        | ( 1,519.00)      | 0.61-             |        |
| =====                          |                          |                   |                  |                   |        |

C O C H R A N C O U N T Y  
 BUDGET COMPARISON REPORT  
 AS OF: SEPTEMBER 14TH, 2015

10 -GENERAL FUND

**COURTHOUSE**

DEPARTMENT EXPENDITURES

|                                |                            | CURRENT<br>BUDGET | ADOPTED<br>BUDGET | BUDGET<br>CHANGE | PERCENT<br>CHANGE |
|--------------------------------|----------------------------|-------------------|-------------------|------------------|-------------------|
| -----                          |                            |                   |                   |                  |                   |
| PERSONAL SERVICES              |                            |                   |                   |                  |                   |
| -----                          |                            |                   |                   |                  |                   |
| 510-5103                       | ASSISTANT CUSTODIAN SALARY | 0.00              | 0.00              | 0.00             | 0.00              |
| 510-5107                       | TEMPORARY OR EXTRA WAGES   | 8,000.00          | 8,000.00          | 0.00             | 0.00              |
| 510-5115                       | CUSTODIAN'S SALARY         | 34,800.00         | 34,800.00         | 0.00             | 0.00              |
| 510-5150                       | LONGEVITY                  | 0.00              | 0.00              | 0.00             | 0.00              |
| 510-5201                       | SOCIAL SECURITY            | 3,275.00          | 3,275.00          | 0.00             | 0.00              |
| 510-5202                       | GROUP INSURANCE            | 9,803.00          | 9,803.00          | 0.00             | 0.00              |
| 510-5203                       | RETIREMENT                 | 4,524.00          | 4,524.00          | 0.00             | 0.00              |
| 510-5204                       | WORKERS' COMPENSATION      | 1,500.00          | 1,500.00          | 0.00             | 0.00              |
| 510-5206                       | UNEMPLOYMENT               | 125.00            | 125.00            | 0.00             | 0.00              |
|                                |                            | -----             | -----             | -----            | -----             |
| TOTAL PERSONAL SERVICES        |                            | 62,027.00         | 62,027.00         | 0.00             | 0.00              |
| SUPPLIES                       |                            |                   |                   |                  |                   |
| -----                          |                            |                   |                   |                  |                   |
| 510-5332                       | CUSTODIAL SUPPLIES         | 10,000.00         | 10,000.00         | 0.00             | 0.00              |
|                                |                            | -----             | -----             | -----            | -----             |
| TOTAL SUPPLIES                 |                            | 10,000.00         | 10,000.00         | 0.00             | 0.00              |
| OTHER SERVICES & CHARGES       |                            |                   |                   |                  |                   |
| -----                          |                            |                   |                   |                  |                   |
| 510-5411                       | MAINTENANCE CONTRACTS      | 16,000.00         | 16,000.00         | 0.00             | 0.00              |
| 510-5440                       | UTILITIES                  | 50,000.00         | 50,000.00         | 0.00             | 0.00              |
| 510-5451                       | REPAIR                     | 49,000.00         | 49,000.00         | 0.00             | 0.00              |
|                                |                            | -----             | -----             | -----            | -----             |
| TOTAL OTHER SERVICES & CHARGES |                            | 115,000.00        | 115,000.00        | 0.00             | 0.00              |
| CAPITAL OUTLAY                 |                            |                   |                   |                  |                   |
| -----                          |                            |                   |                   |                  |                   |
| 510-5571                       | CAPITAL OUTLAY             | 100,000.00        | 100,000.00        | 0.00             | 0.00              |
|                                |                            | -----             | -----             | -----            | -----             |
| TOTAL CAPITAL OUTLAY           |                            | 100,000.00        | 100,000.00        | 0.00             | 0.00              |
| TOTAL COURTHOUSE               |                            | 287,027.00        | 287,027.00        | 0.00             | 0.00              |
|                                |                            | =====             | =====             | =====            | =====             |

C O C H R A N C O U N T Y  
 BUDGET COMPARISON REPORT  
 AS OF: SEPTEMBER 14TH, 2015

10 -GENERAL FUND

**COUNTY JAIL**

DEPARTMENT EXPENDITURES

|                                 | CURRENT<br>BUDGET | ADOPTED<br>BUDGET | BUDGET<br>CHANGE | PERCENT<br>CHANGE |
|---------------------------------|-------------------|-------------------|------------------|-------------------|
| -----                           |                   |                   |                  |                   |
| PERSONAL SERVICES               |                   |                   |                  |                   |
| -----                           |                   |                   |                  |                   |
| 512-5104 SALARIES-JAILERS       | 102,815.00        | 102,815.00        | 0.00             | 0.00              |
| 512-5150 LONGEVITY              | 3,000.00          | 3,000.00          | 0.00             | 0.00              |
| 512-5201 SOCIAL SECURITY        | 8,095.00          | 8,095.00          | 0.00             | 0.00              |
| 512-5202 GROUP INSURANCE        | 29,409.00         | 29,409.00         | 0.00             | 0.00              |
| 512-5203 RETIREMENT             | 13,756.00         | 13,756.00         | 0.00             | 0.00              |
| 512-5204 WORKERS' COMPENSATION  | 2,500.00          | 2,500.00          | 0.00             | 0.00              |
| 512-5205 UNIFORMS               | 1,750.00          | 1,750.00          | 0.00             | 0.00              |
| 512-5206 UNEMPLOYMENT           | 400.00            | 400.00            | 0.00             | 0.00              |
|                                 | -----             | -----             | -----            | -----             |
| TOTAL PERSONAL SERVICES         | 161,725.00        | 161,725.00        | 0.00             | 0.00              |
| SUPPLIES                        |                   |                   |                  |                   |
| -----                           |                   |                   |                  |                   |
| 512-5310 OFFICE SUPPLIES        | 3,500.00          | 3,500.00          | 0.00             | 0.00              |
| 512-5333 FOOD-PRISONERS         | 24,000.00         | 24,000.00         | 0.00             | 0.00              |
| 512-5391 MEDICAL CARE-PRISONERS | 10,000.00         | 10,000.00         | 0.00             | 0.00              |
| 512-5392 MISCELLANEOUS SUPPLIES | 8,000.00          | 8,000.00          | 0.00             | 0.00              |
|                                 | -----             | -----             | -----            | -----             |
| TOTAL SUPPLIES                  | 45,500.00         | 45,500.00         | 0.00             | 0.00              |
| OTHER SERVICES & CHARGES        |                   |                   |                  |                   |
| -----                           |                   |                   |                  |                   |
| 512-5451 REPAIR                 | 15,000.00         | 15,000.00         | 0.00             | 0.00              |
| 512-5499 MISCELLANEOUS          | 10,000.00         | 10,000.00         | 0.00             | 0.00              |
|                                 | -----             | -----             | -----            | -----             |
| TOTAL OTHER SERVICES & CHARGES  | 25,000.00         | 25,000.00         | 0.00             | 0.00              |
| CAPITAL OUTLAY                  |                   |                   |                  |                   |
| -----                           |                   |                   |                  |                   |
| 512-5571 CAPITAL OUTLAY         | 10,000.00         | 10,000.00         | 0.00             | 0.00              |
|                                 | -----             | -----             | -----            | -----             |
| TOTAL CAPITAL OUTLAY            | 10,000.00         | 10,000.00         | 0.00             | 0.00              |
| TOTAL COUNTY JAIL               | 242,225.00        | 242,225.00        | 0.00             | 0.00              |
|                                 | =====             | =====             | =====            | =====             |

C O C H R A N C O U N T Y  
 BUDGET COMPARISON REPORT  
 AS OF: SEPTEMBER 14TH, 2015

10 -GENERAL FUND

**CEMETERY**

DEPARTMENT EXPENDITURES

|                                |                            | CURRENT<br>BUDGET | ADOPTED<br>BUDGET | BUDGET<br>CHANGE | PERCENT<br>CHANGE |
|--------------------------------|----------------------------|-------------------|-------------------|------------------|-------------------|
| -----                          |                            |                   |                   |                  |                   |
| PERSONAL SERVICES              |                            |                   |                   |                  |                   |
| -----                          |                            |                   |                   |                  |                   |
| 516-5103                       | ASS'T CARETAKER SALARY 50% | 19,900.00         | 19,900.00         | 0.00             | 0.00              |
| 516-5107                       | TEMPORARY OR EXTRA WAGES   | 500.00            | 500.00            | 0.00             | 0.00              |
| 516-5115                       | CARETAKER SALARY [50%]     | 20,555.00         | 20,555.00         | 0.00             | 0.00              |
| 516-5150                       | LONGEVITY                  | 1,500.00          | 1,500.00          | 0.00             | 0.00              |
| 516-5201                       | SOCIAL SECURITY            | 3,436.00          | 3,436.00          | 0.00             | 0.00              |
| 516-5202                       | GROUP INSURANCE [50%]      | 9,803.00          | 9,803.00          | 0.00             | 0.00              |
| 516-5203                       | RETIREMENT                 | 5,774.00          | 5,774.00          | 0.00             | 0.00              |
| 516-5204                       | WORKERS' COMPENSATION      | 2,800.00          | 2,800.00          | 0.00             | 0.00              |
| 516-5206                       | UNEMPLOYMENT               | 150.00            | 150.00            | 0.00             | 0.00              |
|                                |                            | -----             | -----             | -----            | -----             |
| TOTAL PERSONAL SERVICES        |                            | 64,418.00         | 64,418.00         | 0.00             | 0.00              |
| SUPPLIES                       |                            |                   |                   |                  |                   |
| -----                          |                            |                   |                   |                  |                   |
| 516-5330                       | FUEL & OIL                 | 6,000.00          | 6,000.00          | 0.00             | 0.00              |
| 516-5332                       | CUSTODIAL SUPPLIES         | 2,000.00          | 2,000.00          | 0.00             | 0.00              |
|                                |                            | -----             | -----             | -----            | -----             |
| TOTAL SUPPLIES                 |                            | 8,000.00          | 8,000.00          | 0.00             | 0.00              |
| OTHER SERVICES & CHARGES       |                            |                   |                   |                  |                   |
| -----                          |                            |                   |                   |                  |                   |
| 516-5420                       | TELECOMMUNICATIONS         | 1,000.00          | 1,000.00          | 0.00             | 0.00              |
| 516-5440                       | UTILITIES                  | 5,000.00          | 5,000.00          | 0.00             | 0.00              |
| 516-5451                       | REPAIR                     | 10,000.00         | 10,000.00         | 0.00             | 0.00              |
| 516-5454                       | TIRES                      | 500.00            | 500.00            | 0.00             | 0.00              |
| 516-5471                       | CARE OF WHFC CEMETERY      | 3,000.00          | 3,000.00          | 0.00             | 0.00              |
| 516-5486                       | CONTRACT LABOR-OPEN CLOSE  | 4,000.00          | 4,000.00          | 0.00             | 0.00              |
| 516-5499                       | MISCELLANEOUS              | 1,000.00          | 1,000.00          | 0.00             | 0.00              |
|                                |                            | -----             | -----             | -----            | -----             |
| TOTAL OTHER SERVICES & CHARGES |                            | 24,500.00         | 24,500.00         | 0.00             | 0.00              |
| CAPITAL OUTLAY                 |                            |                   |                   |                  |                   |
| -----                          |                            |                   |                   |                  |                   |
| 516-5571                       | CAPITAL OUTLAY             | 30,000.00         | 30,000.00         | 0.00             | 0.00              |
|                                |                            | -----             | -----             | -----            | -----             |
| TOTAL CAPITAL OUTLAY           |                            | 30,000.00         | 30,000.00         | 0.00             | 0.00              |
| TOTAL CEMETERY                 |                            | 126,918.00        | 126,918.00        | 0.00             | 0.00              |
|                                |                            | =====             | =====             | =====            | =====             |

C O C H R A N C O U N T Y  
 BUDGET COMPARISON REPORT  
 AS OF: SEPTEMBER 14TH, 2015

10 -GENERAL FUND

**CONSTABLE**

DEPARTMENT EXPENDITURES

|                                |                       | CURRENT<br>BUDGET | ADOPTED<br>BUDGET | BUDGET<br>CHANGE | PERCENT<br>CHANGE |
|--------------------------------|-----------------------|-------------------|-------------------|------------------|-------------------|
| -----                          |                       |                   |                   |                  |                   |
| PERSONAL SERVICES              |                       |                   |                   |                  |                   |
| -----                          |                       |                   |                   |                  |                   |
| 550-5101                       | CONSTABLE'S SALARY    | 31,493.00         | 31,493.00         | 0.00             | 0.00              |
| 550-5150                       | LONGEVITY             | 1,200.00          | 1,200.00          | 0.00             | 0.00              |
| 550-5201                       | SOCIAL SECURITY       | 2,538.00          | 2,538.00          | 0.00             | 0.00              |
| 550-5202                       | GROUP INSURANCE       | 9,803.00          | 9,803.00          | 0.00             | 0.00              |
| 550-5203                       | RETIREMENT            | 4,313.00          | 4,313.00          | 0.00             | 0.00              |
| 550-5204                       | WORKERS' COMPENSATION | 1,541.00          | 1,541.00          | 0.00             | 0.00              |
|                                |                       | -----             | -----             | -----            | -----             |
| TOTAL PERSONAL SERVICES        |                       | 50,888.00         | 50,888.00         | 0.00             | 0.00              |
| SUPPLIES                       |                       |                   |                   |                  |                   |
| -----                          |                       |                   |                   |                  |                   |
| 550-5310                       | OFFICE SUPPLIES       | 500.00            | 500.00            | 0.00             | 0.00              |
| 550-5330                       | FUEL & OIL            | 2,800.00          | 2,800.00          | 0.00             | 0.00              |
| 550-5334                       | OTHER SUPPLIES        | 500.00            | 500.00            | 0.00             | 0.00              |
|                                |                       | -----             | -----             | -----            | -----             |
| TOTAL SUPPLIES                 |                       | 3,800.00          | 3,800.00          | 0.00             | 0.00              |
| OTHER SERVICES & CHARGES       |                       |                   |                   |                  |                   |
| -----                          |                       |                   |                   |                  |                   |
| 550-5420                       | TELECOMMUNICATIONS    | 500.00            | 500.00            | 0.00             | 0.00              |
| 550-5427                       | CONTINUING EDUCATION  | 300.00            | 300.00            | 0.00             | 0.00              |
| 550-5451                       | REPAIR                | 2,000.00          | 2,000.00          | 0.00             | 0.00              |
| 550-5454                       | TIRES                 | 800.00            | 800.00            | 0.00             | 0.00              |
| 550-5480                       | BONDS & NOTARY FEES   | 50.00             | 50.00             | 0.00             | 0.00              |
|                                |                       | -----             | -----             | -----            | -----             |
| TOTAL OTHER SERVICES & CHARGES |                       | 3,650.00          | 3,650.00          | 0.00             | 0.00              |
| CAPITAL OUTLAY                 |                       |                   |                   |                  |                   |
| -----                          |                       |                   |                   |                  |                   |
| 550-5571                       | CAPITAL OUTLAY        | 0.00              | 0.00              | 0.00             | 0.00              |
|                                |                       | -----             | -----             | -----            | -----             |
| TOTAL CAPITAL OUTLAY           |                       | 0.00              | 0.00              | 0.00             | 0.00              |
| TOTAL CONSTABLE                |                       | 58,338.00         | 58,338.00         | 0.00             | 0.00              |
|                                |                       | =====             | =====             | =====            | =====             |



C O C H R A N C O U N T Y  
 BUDGET COMPARISON REPORT  
 AS OF: SEPTEMBER 14TH, 2015

10 -GENERAL FUND

**SHERIFF**

DEPARTMENT EXPENDITURES

|                                |                             | CURRENT<br>BUDGET | ADOPTED<br>BUDGET | BUDGET<br>CHANGE | PERCENT<br>CHANGE |
|--------------------------------|-----------------------------|-------------------|-------------------|------------------|-------------------|
| -----                          |                             |                   |                   |                  |                   |
| PERSONAL SERVICES              |                             |                   |                   |                  |                   |
| -----                          |                             |                   |                   |                  |                   |
| 560-5101                       | SHERIFF'S SALARY            | 47,084.00         | 47,084.00         | 0.00             | 0.00              |
| 560-5104                       | DEPUTIES' SALARIES          | 274,084.00        | 274,084.00        | 0.00             | 0.00              |
| 560-5107                       | TEMPORARY OR EXTRA WAGES    | 30,000.00         | 30,000.00         | 0.00             | 0.00              |
| 560-5120                       | DISPATCHERS' SALARIES       | 138,700.00        | 138,700.00        | 0.00             | 0.00              |
| 560-5150                       | LONGEVITY                   | 8,400.00          | 8,400.00          | 0.00             | 0.00              |
| 560-5201                       | SOCIAL SECURITY             | 38,256.00         | 38,256.00         | 0.00             | 0.00              |
| 560-5202                       | GROUP INSURANCE             | 117,636.00        | 117,636.00        | 0.00             | 0.00              |
| 560-5203                       | RETIREMENT                  | 61,109.00         | 61,109.00         | 0.00             | 0.00              |
| 560-5204                       | WORKERS' COMPENSATION       | 14,500.00         | 14,500.00         | 0.00             | 0.00              |
| 560-5205                       | UNIFORMS                    | 5,000.00          | 5,000.00          | 0.00             | 0.00              |
| 560-5206                       | UNEMPLOYMENT                | 1,200.00          | 1,200.00          | 0.00             | 0.00              |
|                                |                             | -----             | -----             | -----            | -----             |
| TOTAL PERSONAL SERVICES        |                             | 735,969.00        | 735,969.00        | 0.00             | 0.00              |
| SUPPLIES                       |                             |                   |                   |                  |                   |
| -----                          |                             |                   |                   |                  |                   |
| 560-5310                       | OFFICE SUPPLIES             | 10,000.00         | 10,000.00         | 0.00             | 0.00              |
| 560-5311                       | POSTAL EXPENSES             | 1,500.00          | 1,500.00          | 0.00             | 0.00              |
| 560-5330                       | FUEL AND OIL                | 55,000.00         | 55,000.00         | 0.00             | 0.00              |
| 560-5334                       | OTHER SUPPLIES              | 8,000.00          | 8,000.00          | 0.00             | 0.00              |
|                                |                             | -----             | -----             | -----            | -----             |
| TOTAL SUPPLIES                 |                             | 74,500.00         | 74,500.00         | 0.00             | 0.00              |
| OTHER SERVICES & CHARGES       |                             |                   |                   |                  |                   |
| -----                          |                             |                   |                   |                  |                   |
| 560-5411                       | MAINTENANCE CONTRACTS       | 8,700.00          | 12,940.00         | 4,240.00         | 48.74             |
| 560-5420                       | TELECOMMUNICATIONS          | 7,500.00          | 7,500.00          | 0.00             | 0.00              |
| 560-5421                       | TELETYPE [MAINTENANCE]      | 2,000.00          | 2,000.00          | 0.00             | 0.00              |
| 560-5427                       | CONTINUING EDUCATION        | 5,500.00          | 5,500.00          | 0.00             | 0.00              |
| 560-5451                       | MACHINERY-NON-OFFICE REPAIR | 25,000.00         | 25,000.00         | 0.00             | 0.00              |
| 560-5452                       | OFFICE EQUIPMENT REPAIR     | 3,000.00          | 3,000.00          | 0.00             | 0.00              |
| 560-5454                       | TIRES                       | 4,000.00          | 4,000.00          | 0.00             | 0.00              |
| 560-5480                       | BONDS & NOTARY FEES         | 1,000.00          | 1,000.00          | 0.00             | 0.00              |
| 560-5481                       | DUES AND REGISTRATION       | 1,000.00          | 1,000.00          | 0.00             | 0.00              |
| 560-5497                       | OFFICERS' LIABILITY INSURAN | 10,000.00         | 10,000.00         | 0.00             | 0.00              |
| 560-5499                       | MISCELLANEOUS               | 3,000.00          | 3,000.00          | 0.00             | 0.00              |
|                                |                             | -----             | -----             | -----            | -----             |
| TOTAL OTHER SERVICES & CHARGES |                             | 70,700.00         | 74,940.00         | 4,240.00         | 6.00              |
| CAPITAL OUTLAY                 |                             |                   |                   |                  |                   |
| -----                          |                             |                   |                   |                  |                   |
| 560-5571                       | CAPITAL OUTLAY              | 75,000.00         | 75,000.00         | 0.00             | 0.00              |
|                                |                             | -----             | -----             | -----            | -----             |
| TOTAL CAPITAL OUTLAY           |                             | 75,000.00         | 75,000.00         | 0.00             | 0.00              |
| TOTAL SHERIFF                  |                             | 956,169.00        | 960,409.00        | 4,240.00         | 0.44              |
|                                |                             | =====             | =====             | =====            | =====             |

9-14-2015 01:41 PM

C O C H R A N C O U N T Y  
BUDGET COMPARISON REPORT  
AS OF: SEPTEMBER 14TH, 2015

10 -GENERAL FUND

**ADULT PROBATION**

DEPARTMENT EXPENDITURES

|                                      | CURRENT<br>BUDGET | ADOPTED<br>BUDGET | BUDGET<br>CHANGE | PERCENT<br>CHANGE |
|--------------------------------------|-------------------|-------------------|------------------|-------------------|
| -----                                |                   |                   |                  |                   |
| SUPPLIES                             |                   |                   |                  |                   |
| -----                                |                   |                   |                  |                   |
| 570-5310 OFFICE SUPPLIES             | 950.00            | 950.00            | 0.00             | 0.00              |
|                                      | -----             | -----             | -----            | -----             |
| TOTAL SUPPLIES                       | 950.00            | 950.00            | 0.00             | 0.00              |
| OTHER SERVICES & CHARGES             |                   |                   |                  |                   |
| -----                                |                   |                   |                  |                   |
| 570-5420 TELECOMMUNICATIONS          | 954.00            | 954.00            | 0.00             | 0.00              |
| 570-5451 REPAIR                      | 100.00            | 100.00            | 0.00             | 0.00              |
| 570-5499 MISCELLANEOUS               | 100.00            | 100.00            | 0.00             | 0.00              |
|                                      | -----             | -----             | -----            | -----             |
| TOTAL OTHER SERVICES & CHARGES       | 1,154.00          | 1,154.00          | 0.00             | 0.00              |
| CAPITAL OUTLAY                       |                   |                   |                  |                   |
| -----                                |                   |                   |                  |                   |
| 570-5571 CAPITAL OUTLAY-OFFICE EQUIP | 0.00              | 0.00              | 0.00             | 0.00              |
|                                      | -----             | -----             | -----            | -----             |
| TOTAL CAPITAL OUTLAY                 | 0.00              | 0.00              | 0.00             | 0.00              |
| TOTAL ADULT PROBATION                | 2,104.00          | 2,104.00          | 0.00             | 0.00              |
|                                      | =====             | =====             | =====            | =====             |

C O C H R A N C O U N T Y  
 BUDGET COMPARISON REPORT  
 AS OF: SEPTEMBER 14TH, 2015

10 -GENERAL FUND  
**JUVENILE PROBATION**  
 DEPARTMENT EXPENDITURES

|                                | CURRENT<br>BUDGET            | ADOPTED<br>BUDGET | BUDGET<br>CHANGE | PERCENT<br>CHANGE |
|--------------------------------|------------------------------|-------------------|------------------|-------------------|
| -----                          |                              |                   |                  |                   |
| PERSONAL SERVICES              |                              |                   |                  |                   |
| -----                          |                              |                   |                  |                   |
| 571-5102                       | JUV PROBATION OFFICER SALARY | 0.00              | 0.00             | 0.00              |
| 571-5107                       | COUNTY JUV. BOARD SALARY     | 1,200.00          | 1,200.00         | 0.00              |
| 571-5201                       | SOCIAL SECURITY              | 92.00             | 92.00            | 0.00              |
| 571-5202                       | GROUP INSURANCE              | 150.00            | 150.00           | 0.00              |
| 571-5203                       | RETIREMENT                   | 100.00            | 100.00           | 0.00              |
| 571-5204                       | WORKERS' COMPENSATION        | 50.00             | 50.00            | 0.00              |
| 571-5206                       | UNEMPLOYMENT                 | 0.00              | 0.00             | 0.00              |
| -----                          |                              |                   |                  |                   |
| TOTAL PERSONAL SERVICES        | 1,592.00                     | 1,592.00          | 0.00             | 0.00              |
| SUPPLIES                       |                              |                   |                  |                   |
| -----                          |                              |                   |                  |                   |
| 571-5310                       | OFFICE SUPPLIES              | 0.00              | 0.00             | 0.00              |
| 571-5311                       | POSTAL EXPENSES              | 0.00              | 0.00             | 0.00              |
| 571-5330                       | FUEL                         | 0.00              | 0.00             | 0.00              |
| -----                          |                              |                   |                  |                   |
| TOTAL SUPPLIES                 | 0.00                         | 0.00              | 0.00             | 0.00              |
| OTHER SERVICES & CHARGES       |                              |                   |                  |                   |
| -----                          |                              |                   |                  |                   |
| 571-5401                       | AUDIT OF STATE GRANT FUNDS   | 0.00              | 0.00             | 0.00              |
| 571-5411                       | MAINTENANCE CONTRACT         | 0.00              | 0.00             | 0.00              |
| 571-5412                       | COUNTY-NON RESIDENTIAL SERV  | 0.00              | 0.00             | 0.00              |
| 571-5413                       | RESIDENTIAL SERVICES         | 0.00              | 0.00             | 0.00              |
| 571-5420                       | TELECOMMUNICATIONS           | 0.00              | 0.00             | 0.00              |
| 571-5427                       | CONTINUING EDUCATION         | 0.00              | 0.00             | 0.00              |
| 571-5451                       | REPAIR                       | 0.00              | 0.00             | 0.00              |
| 571-5464                       | VEHICLE LEASE                | 0.00              | 0.00             | 0.00              |
| 571-5472                       | LOCAL SUPPORT-JUV BOARD      | 80,000.00         | 80,000.00        | 0.00              |
| -----                          |                              |                   |                  |                   |
| TOTAL OTHER SERVICES & CHARGES | 80,000.00                    | 80,000.00         | 0.00             | 0.00              |
| CAPITAL OUTLAY                 |                              |                   |                  |                   |
| -----                          |                              |                   |                  |                   |
| 571-5571                       | CAPITAL OUTLAY               | 0.00              | 0.00             | 0.00              |
| -----                          |                              |                   |                  |                   |
| TOTAL CAPITAL OUTLAY           | 0.00                         | 0.00              | 0.00             | 0.00              |
| TOTAL JUVENILE PROBATION       | 81,592.00                    | 81,592.00         | 0.00             | 0.00              |
| =====                          |                              |                   |                  |                   |

9-14-2015 01:41 PM

C O C H R A N C O U N T Y  
BUDGET COMPARISON REPORT  
AS OF: SEPTEMBER 14TH, 2015

10 -GENERAL FUND

**PUBLIC SAFETY \* OTHER**

DEPARTMENT EXPENDITURES

|                                | CURRENT<br>BUDGET              | ADOPTED<br>BUDGET | BUDGET<br>CHANGE | PERCENT<br>CHANGE |      |
|--------------------------------|--------------------------------|-------------------|------------------|-------------------|------|
| -----                          |                                |                   |                  |                   |      |
| OTHER SERVICES & CHARGES       |                                |                   |                  |                   |      |
| -----                          |                                |                   |                  |                   |      |
| 580-5404                       | MEDICAL-E.M.S. SUBSIDIES       | 28,500.00         | 28,500.00        | 0.00              | 0.00 |
| 580-5414                       | FIRE PROTECTION CONTRACTS      | 50,000.00         | 50,000.00        | 0.00              | 0.00 |
| 580-5420                       | TELECOMMUNICATIONS CRIME CONTR | 1,000.00          | 1,000.00         | 0.00              | 0.00 |
| 580-5440                       | UTILITIES [TOWER]              | 3,000.00          | 3,000.00         | 0.00              | 0.00 |
| 580-5450                       | REPAIR                         | 6,000.00          | 6,000.00         | 0.00              | 0.00 |
| 580-5499                       | MISCELLANEOUS                  | 10,000.00         | 10,000.00        | 0.00              | 0.00 |
| -----                          |                                |                   |                  |                   |      |
| TOTAL OTHER SERVICES & CHARGES | 98,500.00                      | 98,500.00         | 0.00             | 0.00              |      |
| CAPITAL OUTLAY                 |                                |                   |                  |                   |      |
| -----                          |                                |                   |                  |                   |      |
| 580-5571                       | CAPITAL OUTLAY                 | 30,000.00         | 30,000.00        | 0.00              | 0.00 |
| -----                          |                                |                   |                  |                   |      |
| TOTAL CAPITAL OUTLAY           | 30,000.00                      | 30,000.00         | 0.00             | 0.00              |      |
| TOTAL PUBLIC SAFETY * OTHER    | 128,500.00                     | 128,500.00        | 0.00             | 0.00              |      |
| =====                          |                                |                   |                  |                   |      |

9-14-2015 01:41 PM

C O C H R A N C O U N T Y  
BUDGET COMPARISON REPORT  
AS OF: SEPTEMBER 14TH, 2015

10 -GENERAL FUND

**WELFARE**

DEPARTMENT EXPENDITURES

|                                | CURRENT<br>BUDGET | ADOPTED<br>BUDGET | BUDGET<br>CHANGE | PERCENT<br>CHANGE |
|--------------------------------|-------------------|-------------------|------------------|-------------------|
| -----                          |                   |                   |                  |                   |
| SUPPLIES                       |                   |                   |                  |                   |
| -----                          |                   |                   |                  |                   |
| 640-5333      GROCERIES        | 2,000.00          | 2,000.00          | 0.00             | 0.00              |
| 640-5391      MEDICAL SUPPLIES | 1,000.00          | 1,000.00          | 0.00             | 0.00              |
|                                | -----             | -----             | -----            | -----             |
| TOTAL SUPPLIES                 | 3,000.00          | 3,000.00          | 0.00             | 0.00              |
| OTHER SERVICES & CHARGES       |                   |                   |                  |                   |
| -----                          |                   |                   |                  |                   |
| 640-5405      MEDICAL CARE     | 250.00            | 250.00            | 0.00             | 0.00              |
| 640-5409      FUNERALS         | 2,000.00          | 2,000.00          | 0.00             | 0.00              |
| 640-5440      UTILITIES        | 4,000.00          | 4,000.00          | 0.00             | 0.00              |
| 640-5499      MISCELLANEOUS    | 2,000.00          | 2,000.00          | 0.00             | 0.00              |
|                                | -----             | -----             | -----            | -----             |
| TOTAL OTHER SERVICES & CHARGES | 8,250.00          | 8,250.00          | 0.00             | 0.00              |
| TOTAL WELFARE                  | 11,250.00         | 11,250.00         | 0.00             | 0.00              |
|                                | =====             | =====             | =====            | =====             |

C O C H R A N C O U N T Y  
 BUDGET COMPARISON REPORT  
 AS OF: SEPTEMBER 14TH, 2015

10 -GENERAL FUND  
**COUNTY LIBRARY**

DEPARTMENT EXPENDITURES

|                                | CURRENT<br>BUDGET        | ADOPTED<br>BUDGET | BUDGET<br>CHANGE | PERCENT<br>CHANGE |       |
|--------------------------------|--------------------------|-------------------|------------------|-------------------|-------|
| -----                          |                          |                   |                  |                   |       |
| PERSONAL SERVICES              |                          |                   |                  |                   |       |
| -----                          |                          |                   |                  |                   |       |
| 650-5102                       | LIBRARIAN'S SALARY       | 34,099.00         | 34,099.00        | 0.00              | 0.00  |
| 650-5107                       | TEMPORARY OR EXTRA WAGES | 8,500.00          | 10,000.00        | 1,500.00          | 17.65 |
| 650-5115                       | CUSTODIAN'S SALARY       | 2,056.00          | 2,056.00         | 0.00              | 0.00  |
| 650-5150                       | LONGEVITY                | 0.00              | 0.00             | 0.00              | 0.00  |
| 650-5201                       | SOCIAL SECURITY          | 3,417.00          | 3,531.00         | 114.00            | 3.34  |
| 650-5202                       | GROUP INSURANCE          | 10,294.00         | 10,294.00        | 0.00              | 0.00  |
| 650-5203                       | RETIREMENT               | 4,701.00          | 4,701.00         | 0.00              | 0.00  |
| 650-5204                       | WORKERS' COMPENSATION    | 380.00            | 380.00           | 0.00              | 0.00  |
| 650-5206                       | UNEMPLOYMENT             | 175.00            | 175.00           | 0.00              | 0.00  |
|                                |                          | -----             | -----            | -----             | ----- |
| TOTAL PERSONAL SERVICES        |                          | 63,622.00         | 65,236.00        | 1,614.00          | 2.54  |
|                                |                          |                   |                  |                   |       |
| SUPPLIES                       |                          |                   |                  |                   |       |
| -----                          |                          |                   |                  |                   |       |
| 650-5310                       | OFFICE SUPPLIES          | 4,750.00          | 4,750.00         | 0.00              | 0.00  |
| 650-5311                       | POSTAL EXPENSES          | 500.00            | 500.00           | 0.00              | 0.00  |
| 650-5332                       | CUSTODIAL SUPPLIES       | 1,000.00          | 1,000.00         | 0.00              | 0.00  |
|                                |                          | -----             | -----            | -----             | ----- |
| TOTAL SUPPLIES                 |                          | 6,250.00          | 6,250.00         | 0.00              | 0.00  |
|                                |                          |                   |                  |                   |       |
| OTHER SERVICES & CHARGES       |                          |                   |                  |                   |       |
| -----                          |                          |                   |                  |                   |       |
| 650-5411                       | MAINTENANCE CONTRACTS    | 2,000.00          | 2,000.00         | 0.00              | 0.00  |
| 650-5420                       | TELECOMMUNICATIONS       | 3,000.00          | 3,000.00         | 0.00              | 0.00  |
| 650-5427                       | CONTINUING EDUCATION     | 1,000.00          | 1,500.00         | 500.00            | 50.00 |
| 650-5440                       | UTILITIES                | 6,000.00          | 6,000.00         | 0.00              | 0.00  |
| 650-5451                       | REPAIR                   | 8,000.00          | 8,000.00         | 0.00              | 0.00  |
| 650-5499                       | MISCELLANEOUS            | 1,200.00          | 1,200.00         | 0.00              | 0.00  |
|                                |                          | -----             | -----            | -----             | ----- |
| TOTAL OTHER SERVICES & CHARGES |                          | 21,200.00         | 21,700.00        | 500.00            | 2.36  |
|                                |                          |                   |                  |                   |       |
| CAPITAL OUTLAY                 |                          |                   |                  |                   |       |
| -----                          |                          |                   |                  |                   |       |
| 650-5571                       | CAPITAL OUTLAY           | 7,000.00          | 7,000.00         | 0.00              | 0.00  |
| 650-5590                       | BOOKS                    | 10,000.00         | 10,000.00        | 0.00              | 0.00  |
|                                |                          | -----             | -----            | -----             | ----- |
| TOTAL CAPITAL OUTLAY           |                          | 17,000.00         | 17,000.00        | 0.00              | 0.00  |
|                                |                          |                   |                  |                   |       |
| TOTAL COUNTY LIBRARY           |                          | 108,072.00        | 110,186.00       | 2,114.00          | 1.96  |
|                                |                          | =====             | =====            | =====             | ===== |

9-14-2015 01:41 PM

C O C H R A N C O U N T Y  
BUDGET COMPARISON REPORT  
AS OF: SEPTEMBER 14TH, 2015

10 -GENERAL FUND

**MUSEUM**

DEPARTMENT EXPENDITURES

|                                |                       | CURRENT<br>BUDGET | ADOPTED<br>BUDGET | BUDGET<br>CHANGE | PERCENT<br>CHANGE |
|--------------------------------|-----------------------|-------------------|-------------------|------------------|-------------------|
| -----                          |                       |                   |                   |                  |                   |
| PERSONAL SERVICES              |                       |                   |                   |                  |                   |
| -----                          |                       |                   |                   |                  |                   |
| 652-5115                       | CUSTODIAN'S SALARY 5% | 2,056.00          | 2,056.00          | 0.00             | 0.00              |
| 652-5201                       | SOCIAL SECURITY       | 158.00            | 158.00            | 0.00             | 0.00              |
| 652-5202                       | GROUP INSURANCE       | 491.00            | 491.00            | 0.00             | 0.00              |
| 652-5203                       | RETIREMENT            | 268.00            | 268.00            | 0.00             | 0.00              |
| 652-5204                       | WORKERS' COMPENSATION | 53.00             | 53.00             | 0.00             | 0.00              |
| 652-5206                       | UNEMPLOYMENT          | 25.00             | 25.00             | 0.00             | 0.00              |
|                                |                       | -----             | -----             | -----            | -----             |
| TOTAL PERSONAL SERVICES        |                       | 3,051.00          | 3,051.00          | 0.00             | 0.00              |
| SUPPLIES                       |                       |                   |                   |                  |                   |
| -----                          |                       |                   |                   |                  |                   |
| 652-5310                       | OFFICE SUPPLIES       | 285.00            | 285.00            | 0.00             | 0.00              |
| 652-5311                       | POSTAL EXPENSES       | 200.00            | 200.00            | 0.00             | 0.00              |
| 652-5332                       | CUSTODIAL SUPPLIES    | 200.00            | 200.00            | 0.00             | 0.00              |
|                                |                       | -----             | -----             | -----            | -----             |
| TOTAL SUPPLIES                 |                       | 685.00            | 685.00            | 0.00             | 0.00              |
| OTHER SERVICES & CHARGES       |                       |                   |                   |                  |                   |
| -----                          |                       |                   |                   |                  |                   |
| 652-5411                       | MAINTENANCE CONTRACTS | 0.00              | 0.00              | 0.00             | 0.00              |
| 652-5420                       | TELECOMMUNICATIONS    | 2,000.00          | 2,000.00          | 0.00             | 0.00              |
| 652-5427                       | CONTINUING EDUCATION  | 0.00              | 0.00              | 0.00             | 0.00              |
| 652-5440                       | UTILITIES             | 5,000.00          | 5,000.00          | 0.00             | 0.00              |
| 652-5451                       | REPAIR                | 10,000.00         | 10,000.00         | 0.00             | 0.00              |
| 652-5499                       | MISCELLANEOUS         | 500.00            | 500.00            | 0.00             | 0.00              |
|                                |                       | -----             | -----             | -----            | -----             |
| TOTAL OTHER SERVICES & CHARGES |                       | 17,500.00         | 17,500.00         | 0.00             | 0.00              |
| CAPITAL OUTLAY                 |                       |                   |                   |                  |                   |
| -----                          |                       |                   |                   |                  |                   |
| 652-5571                       | CAPITAL OUTLAY        | 0.00              | 0.00              | 0.00             | 0.00              |
|                                |                       | -----             | -----             | -----            | -----             |
| TOTAL CAPITAL OUTLAY           |                       | 0.00              | 0.00              | 0.00             | 0.00              |
| TOTAL MUSEUM                   |                       | 21,236.00         | 21,236.00         | 0.00             | 0.00              |
|                                |                       | =====             | =====             | =====            | =====             |

C O C H R A N C O U N T Y  
 BUDGET COMPARISON REPORT  
 AS OF: SEPTEMBER 14TH, 2015

10 -GENERAL FUND

**COUNTY PARK**

DEPARTMENT EXPENDITURES

|                                | CURRENT<br>BUDGET          | ADOPTED<br>BUDGET | BUDGET<br>CHANGE | PERCENT<br>CHANGE |      |
|--------------------------------|----------------------------|-------------------|------------------|-------------------|------|
| -----                          |                            |                   |                  |                   |      |
| PERSONAL SERVICES              |                            |                   |                  |                   |      |
| -----                          |                            |                   |                  |                   |      |
| 660-5103                       | ASS'T CARETAKER SALARY 35% | 13,923.00         | 13,923.00        | 0.00              | 0.00 |
| 660-5107                       | TEMPORARY OR EXTRA WAGES   | 500.00            | 500.00           | 0.00              | 0.00 |
| 660-5115                       | CARETAKER'S SALARY [35%]   | 14,388.00         | 14,388.00        | 0.00              | 0.00 |
| 660-5150                       | LONGEVITY                  | 210.00            | 210.00           | 0.00              | 0.00 |
| 660-5201                       | SOCIAL SECURITY            | 2,221.00          | 2,221.00         | 0.00              | 0.00 |
| 660-5202                       | GROUP INSURANCE [35%]      | 6,863.00          | 6,863.00         | 0.00              | 0.00 |
| 660-5203                       | RETIREMENT                 | 3,708.00          | 3,708.00         | 0.00              | 0.00 |
| 660-5204                       | WORKERS' COMPENSATION      | 1,500.00          | 1,500.00         | 0.00              | 0.00 |
| 660-5206                       | UNEMPLOYMENT               | 150.00            | 150.00           | 0.00              | 0.00 |
| -----                          |                            |                   |                  |                   |      |
| TOTAL PERSONAL SERVICES        | 43,463.00                  | 43,463.00         | 0.00             | 0.00              |      |
| SUPPLIES                       |                            |                   |                  |                   |      |
| -----                          |                            |                   |                  |                   |      |
| 660-5330                       | FUEL AND OIL               | 5,000.00          | 5,000.00         | 0.00              | 0.00 |
| 660-5332                       | CUSTODIAL SUPPLIES         | 5,000.00          | 5,000.00         | 0.00              | 0.00 |
| -----                          |                            |                   |                  |                   |      |
| TOTAL SUPPLIES                 | 10,000.00                  | 10,000.00         | 0.00             | 0.00              |      |
| OTHER SERVICES & CHARGES       |                            |                   |                  |                   |      |
| -----                          |                            |                   |                  |                   |      |
| 660-5440                       | UTILITIES & IRRIGATION     | 15,000.00         | 15,000.00        | 0.00              | 0.00 |
| 660-5451                       | REPAIR                     | 30,000.00         | 30,000.00        | 0.00              | 0.00 |
| 660-5454                       | TIRES                      | 1,000.00          | 1,000.00         | 0.00              | 0.00 |
| -----                          |                            |                   |                  |                   |      |
| TOTAL OTHER SERVICES & CHARGES | 46,000.00                  | 46,000.00         | 0.00             | 0.00              |      |
| CAPITAL OUTLAY                 |                            |                   |                  |                   |      |
| -----                          |                            |                   |                  |                   |      |
| 660-5571                       | CAPITAL OUTLAY             | 0.00              | 0.00             | 0.00              | 0.00 |
| -----                          |                            |                   |                  |                   |      |
| TOTAL CAPITAL OUTLAY           | 0.00                       | 0.00              | 0.00             | 0.00              |      |
| TOTAL COUNTY PARK              | 99,463.00                  | 99,463.00         | 0.00             | 0.00              |      |
| =====                          |                            |                   |                  |                   |      |



C O C H R A N C O U N T Y  
 BUDGET COMPARISON REPORT  
 AS OF: SEPTEMBER 14TH, 2015

10 -GENERAL FUND

**ACTIVITY BUILDING**

DEPARTMENT EXPENDITURES

|                          | CURRENT<br>BUDGET              | ADOPTED<br>BUDGET | BUDGET<br>CHANGE | PERCENT<br>CHANGE |       |
|--------------------------|--------------------------------|-------------------|------------------|-------------------|-------|
| -----                    |                                |                   |                  |                   |       |
| PERSONAL SERVICES        |                                |                   |                  |                   |       |
| -----                    |                                |                   |                  |                   |       |
| 662-5107                 | TEMPORARY OR EXTRA WAGES       | 1,300.00          | 1,300.00         | 0.00              | 0.00  |
| 662-5115                 | CUSTODIAN SALARY (90%)         | 36,998.00         | 36,998.00        | 0.00              | 0.00  |
| 662-5150                 | LONGEVITY                      | 1,200.00          | 1,200.00         | 0.00              | 0.00  |
| 662-5201                 | SOCIAL SECURITY                | 3,022.00          | 3,022.00         | 0.00              | 0.00  |
| 662-5202                 | GROUP INSURANCE                | 8,823.00          | 8,823.00         | 0.00              | 0.00  |
| 662-5203                 | RETIREMENT                     | 4,966.00          | 4,966.00         | 0.00              | 0.00  |
| 662-5204                 | WORKERS' COMPENSATION          | 2,392.00          | 2,392.00         | 0.00              | 0.00  |
| 662-5206                 | UNEMPLOYMENT                   | 125.00            | 125.00           | 0.00              | 0.00  |
|                          |                                | -----             | -----            | -----             | ----- |
|                          | TOTAL PERSONAL SERVICES        | 58,826.00         | 58,826.00        | 0.00              | 0.00  |
| SUPPLIES                 |                                |                   |                  |                   |       |
| -----                    |                                |                   |                  |                   |       |
| 662-5332                 | CUSTODIAL SUPPLIES             | 7,000.00          | 7,000.00         | 0.00              | 0.00  |
|                          |                                | -----             | -----            | -----             | ----- |
|                          | TOTAL SUPPLIES                 | 7,000.00          | 7,000.00         | 0.00              | 0.00  |
| OTHER SERVICES & CHARGES |                                |                   |                  |                   |       |
| -----                    |                                |                   |                  |                   |       |
| 662-5411                 | MAINTENANCE CONTRACTS          | 4,000.00          | 4,000.00         | 0.00              | 0.00  |
| 662-5440                 | UTILITIES                      | 28,000.00         | 28,000.00        | 0.00              | 0.00  |
| 662-5451                 | REPAIR                         | 60,000.00         | 60,000.00        | 0.00              | 0.00  |
|                          |                                | -----             | -----            | -----             | ----- |
|                          | TOTAL OTHER SERVICES & CHARGES | 92,000.00         | 92,000.00        | 0.00              | 0.00  |
| CAPITAL OUTLAY           |                                |                   |                  |                   |       |
| -----                    |                                |                   |                  |                   |       |
| 662-5571                 | CAPITAL OUTLAY                 | 20,000.00         | 20,000.00        | 0.00              | 0.00  |
|                          |                                | -----             | -----            | -----             | ----- |
|                          | TOTAL CAPITAL OUTLAY           | 20,000.00         | 20,000.00        | 0.00              | 0.00  |
|                          | TOTAL ACTIVITY BUILDING        | 177,826.00        | 177,826.00       | 0.00              | 0.00  |
|                          |                                | =====             | =====            | =====             | ===== |

C O C H R A N C O U N T Y  
 BUDGET COMPARISON REPORT  
 AS OF: SEPTEMBER 14TH, 2015

10 -GENERAL FUND

**SENIOR CITIZENS**

DEPARTMENT EXPENDITURES

|                                |                          | CURRENT<br>BUDGET | ADOPTED<br>BUDGET | BUDGET<br>CHANGE | PERCENT<br>CHANGE |
|--------------------------------|--------------------------|-------------------|-------------------|------------------|-------------------|
| -----                          |                          |                   |                   |                  |                   |
| PERSONAL SERVICES              |                          |                   |                   |                  |                   |
| -----                          |                          |                   |                   |                  |                   |
| 663-5107                       | PART-TIME EMPLOYEES      | 0.00              | 0.00              | 0.00             | 0.00              |
| 663-5108                       | DRIVER'S SALARY          | 0.00              | 0.00              | 0.00             | 0.00              |
| 663-5109                       | DIRECTOR'S SALARY        | 0.00              | 0.00              | 0.00             | 0.00              |
| 663-5201                       | SOCIAL SECURITY          | 0.00              | 0.00              | 0.00             | 0.00              |
| 663-5202                       | GROUP INSURANCE          | 0.00              | 0.00              | 0.00             | 0.00              |
| 663-5203                       | RETIREMENT               | 0.00              | 0.00              | 0.00             | 0.00              |
| 663-5204                       | WORKERS' COMPENSATION    | 0.00              | 0.00              | 0.00             | 0.00              |
| 663-5206                       | UNEMPLOYMENT             | 0.00              | 0.00              | 0.00             | 0.00              |
|                                |                          | -----             | -----             | -----            | -----             |
| TOTAL PERSONAL SERVICES        |                          | 0.00              | 0.00              | 0.00             | 0.00              |
| SUPPLIES                       |                          |                   |                   |                  |                   |
| -----                          |                          |                   |                   |                  |                   |
| 663-5333                       | FOOD                     | 0.00              | 0.00              | 0.00             | 0.00              |
| 663-5334                       | OTHER SUPPLIES           | 0.00              | 0.00              | 0.00             | 0.00              |
|                                |                          | -----             | -----             | -----            | -----             |
| TOTAL SUPPLIES                 |                          | 0.00              | 0.00              | 0.00             | 0.00              |
| OTHER SERVICES & CHARGES       |                          |                   |                   |                  |                   |
| -----                          |                          |                   |                   |                  |                   |
| 663-5418                       | SENIOR CITIZENS CONTRACT | 75,000.00         | 75,000.00         | 0.00             | 0.00              |
| 663-5420                       | TELECOMMUNICATIONS       | 0.00              | 0.00              | 0.00             | 0.00              |
| 663-5427                       | CONTINUING EDUCATION     | 0.00              | 0.00              | 0.00             | 0.00              |
| 663-5451                       | REPAIRS & MAINTENANCE    | 1,000.00          | 1,000.00          | 0.00             | 0.00              |
| 663-5499                       | MISCELLANEOUS            | 0.00              | 0.00              | 0.00             | 0.00              |
|                                |                          | -----             | -----             | -----            | -----             |
| TOTAL OTHER SERVICES & CHARGES |                          | 76,000.00         | 76,000.00         | 0.00             | 0.00              |
| CAPITAL OUTLAY                 |                          |                   |                   |                  |                   |
| -----                          |                          |                   |                   |                  |                   |
| 663-5571                       | CAPITAL OUTLAY           | 0.00              | 0.00              | 0.00             | 0.00              |
|                                |                          | -----             | -----             | -----            | -----             |
| TOTAL CAPITAL OUTLAY           |                          | 0.00              | 0.00              | 0.00             | 0.00              |
| TOTAL SENIOR CITIZENS          |                          | 76,000.00         | 76,000.00         | 0.00             | 0.00              |
|                                |                          | =====             | =====             | =====            | =====             |

C O C H R A N C O U N T Y  
 BUDGET COMPARISON REPORT  
 AS OF: SEPTEMBER 14TH, 2015

10 -GENERAL FUND

**EXTENSION SERVICE**

DEPARTMENT EXPENDITURES

|                                | CURRENT<br>BUDGET           | ADOPTED<br>BUDGET | BUDGET<br>CHANGE       | PERCENT<br>CHANGE |
|--------------------------------|-----------------------------|-------------------|------------------------|-------------------|
| -----                          |                             |                   |                        |                   |
| PERSONAL SERVICES              |                             |                   |                        |                   |
| -----                          |                             |                   |                        |                   |
| 665-5102                       | AGENT'S SALARIES            | 24,401.00         | 12,201.00 ( 12,200.00) | 50.00-            |
| 665-5105                       | SECRETARY'S SALARY          | 37,809.00         | 37,809.00 0.00         | 0.00              |
| 665-5107                       | TEMPORARY OR EXTRA WAGES    | 1,000.00          | 1,000.00 0.00          | 0.00              |
| 665-5150                       | LONGEVITY                   | 1,200.00          | 1,200.00 0.00          | 0.00              |
| 665-5201                       | SOCIAL SECURITY             | 5,169.00          | 4,236.00 ( 933.00)     | 18.05-            |
| 665-5202                       | GROUP INSURANCE             | 9,803.00          | 9,803.00 0.00          | 0.00              |
| 665-5203                       | RETIREMENT                  | 8,341.00          | 5,046.00 ( 3,295.00)   | 39.50-            |
| 665-5204                       | WORKERS' COMPENSATION       | 250.00            | 250.00 0.00            | 0.00              |
| 665-5206                       | UNEMPLOYMENT                | 120.00            | 120.00 0.00            | 0.00              |
| -----                          |                             |                   |                        |                   |
| TOTAL PERSONAL SERVICES        | 88,093.00                   | 71,665.00         | ( 16,428.00)           | 18.65-            |
| SUPPLIES                       |                             |                   |                        |                   |
| -----                          |                             |                   |                        |                   |
| 665-5310                       | OFFICE SUPPLIES             | 2,500.00          | 2,500.00 0.00          | 0.00              |
| 665-5311                       | POSTAL EXPENSES             | 125.00            | 125.00 0.00            | 0.00              |
| 665-5330                       | FUEL AND OIL                | 10,000.00         | 10,000.00 0.00         | 0.00              |
| 665-5334                       | OTHER SUPPLIES              | 3,300.00          | 4,000.00 700.00        | 21.21             |
| -----                          |                             |                   |                        |                   |
| TOTAL SUPPLIES                 | 15,925.00                   | 16,625.00         | 700.00                 | 4.40              |
| OTHER SERVICES & CHARGES       |                             |                   |                        |                   |
| -----                          |                             |                   |                        |                   |
| 665-5411                       | MAINTENANCE CONTRACTS       | 0.00              | 700.00 700.00          | 0.00              |
| 665-5420                       | TELECOMMUNICATIONS          | 3,000.00          | 3,000.00 0.00          | 0.00              |
| 665-5425                       | FCS AGENT-TRAVEL-IN COUNTY  | 2,400.00          | 0.00 ( 2,400.00)       | 100.00-           |
| 665-5427                       | CO AGENT-TRAVEL-OUT OF COUN | 9,000.00          | 10,000.00 1,000.00     | 11.11             |
| 665-5428                       | FCS AGENT-TRAVEL-OUT OF COU | 4,000.00          | 0.00 ( 4,000.00)       | 100.00-           |
| 665-5451                       | REPAIRS                     | 2,500.00          | 2,500.00 0.00          | 0.00              |
| 665-5454                       | TIRES                       | 750.00            | 1,000.00 250.00        | 33.33             |
| 665-5499                       | MISCELLANEOUS               | 1,500.00          | 1,500.00 0.00          | 0.00              |
| -----                          |                             |                   |                        |                   |
| TOTAL OTHER SERVICES & CHARGES | 23,150.00                   | 18,700.00         | ( 4,450.00)            | 19.22-            |
| CAPITAL OUTLAY                 |                             |                   |                        |                   |
| -----                          |                             |                   |                        |                   |
| 665-5571                       | CAPITAL OUTLAY              | 0.00              | 10,000.00 10,000.00    | 0.00              |
| -----                          |                             |                   |                        |                   |
| TOTAL CAPITAL OUTLAY           | 0.00                        | 10,000.00         | 10,000.00              | 0.00              |
| TOTAL EXTENSION SERVICE        | 127,168.00                  | 116,990.00        | ( 10,178.00)           | 8.00-             |
| =====                          |                             |                   |                        |                   |

9-14-2015 01:41 PM

C O C H R A N C O U N T Y  
BUDGET COMPARISON REPORT  
AS OF: SEPTEMBER 14TH, 2015

10 -GENERAL FUND

**TRANSFERS TO OTHER FUNDS**

DEPARTMENT EXPENDITURES

|  | CURRENT<br>BUDGET | ADOPTED<br>BUDGET | BUDGET<br>CHANGE | PERCENT<br>CHANGE |
|--|-------------------|-------------------|------------------|-------------------|
| -----                                  |                   |                   |                  |                   |
| INTERFUND TRANSFERS                    |                   |                   |                  |                   |
| -----                                  |                   |                   |                  |                   |
| 700-5700      TRANSFERS TO OTHER FUNDS | 120,000.00        | 120,000.00        | 0.00             | 0.00              |
|  | -----             | -----             | -----            | -----             |
| TOTAL INTERFUND TRANSFERS              | 120,000.00        | 120,000.00        | 0.00             | 0.00              |
| TOTAL TRANSFERS TO OTHER FUNDS         | 120,000.00        | 120,000.00        | 0.00             | 0.00              |
|  | =====             | =====             | =====            | =====             |
| *** TOTAL EXPENDITURES ***             | 4,364,053.00      | 4,382,494.00      | 18,441.00        | 0.00              |
|  | =====             | =====             | =====            | =====             |

C O C H R A N C O U N T Y  
 BUDGET COMPARISON REPORT  
 AS OF: SEPTEMBER 14TH, 2015

**15 -ROAD & BRIDGE FUND**

**REVENUES**

|   | CURRENT<br>BUDGET | ADOPTED<br>BUDGET | BUDGET<br>CHANGE | PERCENT<br>CHANGE |
|---|-------------------|-------------------|------------------|-------------------|
| -----                                     |                   |                   |                  |                   |
| TAXES                                     |                   |                   |                  |                   |
| -----                                     |                   |                   |                  |                   |
| 000-4310.110 CURRENT TAXES-GENERAL LEVY   | 0.00              | 0.00              | 0.00             | 0.00              |
| 000-4310.120 DELINQUENT TAXES-GENERAL LE  | 0.00              | 0.00              | 0.00             | 0.00              |
| 000-4318.130 FM/FC TAX CURRENT            | 1,208,914.00      | 1,208,170.00      | ( 744.00)        | 0.06-             |
| 000-4318.140 DELINQUENT TAXES-FM/FC LEVY  | 9,089.00          | 9,089.00          | 0.00             | 0.00              |
| 000-4319.120 PENALTY AND INTEREST         | 5,000.00          | 5,000.00          | 0.00             | 0.00              |
|   | -----             | -----             | -----            | -----             |
| TOTAL TAXES                               | 1,223,003.00      | 1,222,259.00      | ( 744.00)        | 0.06-             |
|   |                   |                   |                  |                   |
| LICENSES & PERMITS                        |                   |                   |                  |                   |
| -----                                     |                   |                   |                  |                   |
| 000-4321.200 VEHICLE REGISTRATION         | 150,000.00        | 160,000.00        | 10,000.00        | 6.67              |
| 000-4321.201 \$10 COUNTY ROAD & BRIDGE FE | 27,500.00         | 27,500.00         | 0.00             | 0.00              |
|   | -----             | -----             | -----            | -----             |
| TOTAL LICENSES & PERMITS                  | 177,500.00        | 187,500.00        | 10,000.00        | 5.63              |
|   |                   |                   |                  |                   |
| FINES & FORFEITURES                       |                   |                   |                  |                   |
| -----                                     |                   |                   |                  |                   |
| 000-4350.100 80% FINES COUNTY CLERK       | 6,000.00          | 2,600.00          | ( 3,400.00)      | 56.67-            |
| 000-4350.801 JUSTICE OF PEACE FINES       | 50,000.00         | 23,000.00         | ( 27,000.00)     | 54.00-            |
|   | -----             | -----             | -----            | -----             |
| TOTAL FINES & FORFEITURES                 | 56,000.00         | 25,600.00         | ( 30,400.00)     | 54.29-            |
|   |                   |                   |                  |                   |
| MISCELLANEOUS                             |                   |                   |                  |                   |
| -----                                     |                   |                   |                  |                   |
| 000-4360.100 INTEREST EARNINGS            | 4,000.00          | 4,000.00          | 0.00             | 0.00              |
| 000-4364.100 SALE OF ASSETS               | 500.00            | 500.00            | 0.00             | 0.00              |
| 000-4380.200 OTHER [MISCELLANEOUS]        | 1,000.00          | 1,000.00          | 0.00             | 0.00              |
|   | -----             | -----             | -----            | -----             |
| TOTAL MISCELLANEOUS                       | 5,500.00          | 5,500.00          | 0.00             | 0.00              |
|   |                   |                   |                  |                   |
| TRANSFERS FROM OTHER FUNDS                |                   |                   |                  |                   |
| -----                                     |                   |                   |                  |                   |
| 000-4390 TRANSFERS FROM OTHER FUNDS       | 100,000.00        | 100,000.00        | 0.00             | 0.00              |
|   | -----             | -----             | -----            | -----             |
| TOTAL TRANSFERS FROM OTHER FUNDS          | 100,000.00        | 100,000.00        | 0.00             | 0.00              |
|   |                   |                   |                  |                   |
| *** TOTAL REVENUES ***                    | 1,562,003.00      | 1,540,859.00      | ( 21,144.00)     | 1.35-             |
|   | =====             | =====             | =====            | =====             |

9-14-2015 01:41 PM

C O C H R A N C O U N T Y  
BUDGET COMPARISON REPORT  
AS OF: SEPTEMBER 14TH, 2015

15 -ROAD & BRIDGE FUND  
**COMMISSIONERS COURT**  
DEPARTMENT EXPENDITURES

|                                |                                | CURRENT<br>BUDGET | ADOPTED<br>BUDGET | BUDGET<br>CHANGE | PERCENT<br>CHANGE |
|--------------------------------|--------------------------------|-------------------|-------------------|------------------|-------------------|
| -----                          |                                |                   |                   |                  |                   |
| PERSONAL SERVICES              |                                |                   |                   |                  |                   |
| -----                          |                                |                   |                   |                  |                   |
| 610-5101                       | COMMISSIONERS' SALARIES        | 153,876.00        | 153,876.00        | 0.00             | 0.00              |
| 610-5150                       | LONGEVITY                      | 3,000.00          | 3,000.00          | 0.00             | 0.00              |
| 610-5201                       | SOCIAL SECURITY                | 15,674.00         | 15,674.00         | 0.00             | 0.00              |
| 610-5202                       | GROUP INSURANCE                | 39,212.00         | 39,212.00         | 0.00             | 0.00              |
| 610-5203                       | RETIREMENT                     | 26,634.00         | 26,634.00         | 0.00             | 0.00              |
| 610-5204                       | WORKERS' COMPENSATION          | 3,200.00          | 3,200.00          | 0.00             | 0.00              |
|                                |                                | -----             | -----             | -----            | -----             |
| TOTAL PERSONAL SERVICES        |                                | 241,596.00        | 241,596.00        | 0.00             | 0.00              |
| SUPPLIES                       |                                |                   |                   |                  |                   |
| -----                          |                                |                   |                   |                  |                   |
| 610-5310                       | OFFICE SUPPLIES                | 4,500.00          | 4,500.00          | 0.00             | 0.00              |
| 610-5311                       | POSTAL EXPENSES                | 200.00            | 200.00            | 0.00             | 0.00              |
|                                |                                | -----             | -----             | -----            | -----             |
| TOTAL SUPPLIES                 |                                | 4,700.00          | 4,700.00          | 0.00             | 0.00              |
| OTHER SERVICES & CHARGES       |                                |                   |                   |                  |                   |
| -----                          |                                |                   |                   |                  |                   |
| 610-5411                       | MAINTENANCE CONTRACT           | 150.00            | 150.00            | 0.00             | 0.00              |
| 610-5417                       | BANK CHARGES                   | 300.00            | 300.00            | 0.00             | 0.00              |
| 610-5420                       | TELECOMMUNICATIONS             | 6,300.00          | 6,300.00          | 0.00             | 0.00              |
| 610-5425                       | COMMISSIONERS-IN COUNTY TRAVEL | 40,800.00         | 40,800.00         | 0.00             | 0.00              |
| 610-5426                       | CNTY JUDGE-TRAVEL-IN COUNTY    | 7,200.00          | 7,200.00          | 0.00             | 0.00              |
| 610-5427                       | COMM-CONTINUING EDUCATION      | 7,000.00          | 7,000.00          | 0.00             | 0.00              |
| 610-5428                       | CO. JUDGE-CONTINUING EDUCATION | 2,500.00          | 2,500.00          | 0.00             | 0.00              |
| 610-5430                       | LEGAL NOTICES                  | 5,000.00          | 5,000.00          | 0.00             | 0.00              |
| 610-5456                       | REPAIR-COUNTY CAR              | 1,000.00          | 1,000.00          | 0.00             | 0.00              |
| 610-5480                       | BONDS & NOTARY FEES            | 500.00            | 500.00            | 0.00             | 0.00              |
| 610-5481                       | DUES AND REGISTRATION          | 5,000.00          | 5,000.00          | 0.00             | 0.00              |
| 610-5499                       | MISCELLANEOUS                  | 5,900.00          | 5,900.00          | 0.00             | 0.00              |
|                                |                                | -----             | -----             | -----            | -----             |
| TOTAL OTHER SERVICES & CHARGES |                                | 81,650.00         | 81,650.00         | 0.00             | 0.00              |
| CAPITAL OUTLAY                 |                                |                   |                   |                  |                   |
| -----                          |                                |                   |                   |                  |                   |
| 610-5571                       | CAPITAL OUTLAY                 | 30,000.00         | 30,000.00         | 0.00             | 0.00              |
|                                |                                | -----             | -----             | -----            | -----             |
| TOTAL CAPITAL OUTLAY           |                                | 30,000.00         | 30,000.00         | 0.00             | 0.00              |
| TOTAL COMMISSIONERS COURT      |                                | 357,946.00        | 357,946.00        | 0.00             | 0.00              |
|                                |                                | =====             | =====             | =====            | =====             |

9-14-2015 01:41 PM

C O C H R A N C O U N T Y  
 BUDGET COMPARISON REPORT  
 AS OF: SEPTEMBER 14TH, 2015

15 -ROAD & BRIDGE FUND

**PRECINCT ONE**

DEPARTMENT EXPENDITURES

|                                |                           | CURRENT<br>BUDGET | ADOPTED<br>BUDGET | BUDGET<br>CHANGE | PERCENT<br>CHANGE |
|--------------------------------|---------------------------|-------------------|-------------------|------------------|-------------------|
| -----                          |                           |                   |                   |                  |                   |
| PERSONAL SERVICES              |                           |                   |                   |                  |                   |
| -----                          |                           |                   |                   |                  |                   |
| 621-5106                       | MAINTAINER OPRS' SALARIES | 82,217.00         | 82,217.00         | 0.00             | 0.00              |
| 621-5107                       | TEMPORARY OR EXTRA WAGES  | 9,000.00          | 9,000.00          | 0.00             | 0.00              |
| 621-5150                       | LONGEVITY                 | 600.00            | 600.00            | 0.00             | 0.00              |
| 621-5201                       | SOCIAL SECURITY           | 7,061.00          | 7,061.00          | 0.00             | 0.00              |
| 621-5202                       | GROUP INSURANCE           | 19,606.00         | 19,606.00         | 0.00             | 0.00              |
| 621-5203                       | RETIREMENT                | 10,829.00         | 10,829.00         | 0.00             | 0.00              |
| 621-5204                       | WORKERS' COMPENSATION     | 6,200.00          | 6,200.00          | 0.00             | 0.00              |
| 621-5206                       | UNEMPLOYMENT              | 250.00            | 250.00            | 0.00             | 0.00              |
|                                |                           | -----             | -----             | -----            | -----             |
| TOTAL PERSONAL SERVICES        |                           | 135,763.00        | 135,763.00        | 0.00             | 0.00              |
| SUPPLIES                       |                           |                   |                   |                  |                   |
| -----                          |                           |                   |                   |                  |                   |
| 621-5330                       | FUEL & OIL                | 50,000.00         | 50,000.00         | 0.00             | 0.00              |
| 621-5356                       | ROAD MATERIALS & SUPPLIES | 50,000.00         | 50,000.00         | 0.00             | 0.00              |
|                                |                           | -----             | -----             | -----            | -----             |
| TOTAL SUPPLIES                 |                           | 100,000.00        | 100,000.00        | 0.00             | 0.00              |
| OTHER SERVICES & CHARGES       |                           |                   |                   |                  |                   |
| -----                          |                           |                   |                   |                  |                   |
| 621-5420                       | TELECOMMUNICATIONS        | 3,000.00          | 1,000.00          | ( 2,000.00)      | 66.67-            |
| 621-5440                       | UTILITIES                 | 8,000.00          | 7,000.00          | ( 1,000.00)      | 12.50-            |
| 621-5451                       | REPAIRS                   | 30,000.00         | 30,000.00         | 0.00             | 0.00              |
| 621-5454                       | TIRES                     | 8,000.00          | 8,000.00          | 0.00             | 0.00              |
|                                |                           | -----             | -----             | -----            | -----             |
| TOTAL OTHER SERVICES & CHARGES |                           | 49,000.00         | 46,000.00         | ( 3,000.00)      | 6.12-             |
| CAPITAL OUTLAY                 |                           |                   |                   |                  |                   |
| -----                          |                           |                   |                   |                  |                   |
| 621-5571                       | CAPITAL OUTLAY            | 329,921.00        | 190,000.00        | ( 139,921.00)    | 42.41-            |
|                                |                           | -----             | -----             | -----            | -----             |
| TOTAL CAPITAL OUTLAY           |                           | 329,921.00        | 190,000.00        | ( 139,921.00)    | 42.41-            |
| TOTAL PRECINCT ONE             |                           | 614,684.00        | 471,763.00        | ( 142,921.00)    | 23.25-            |
|                                |                           | =====             | =====             | =====            | =====             |

C O C H R A N C O U N T Y  
 BUDGET COMPARISON REPORT  
 AS OF: SEPTEMBER 14TH, 2015

15 -ROAD & BRIDGE FUND

**PRECINCT TWO**

DEPARTMENT EXPENDITURES

|                                | CURRENT<br>BUDGET         | ADOPTED<br>BUDGET | BUDGET<br>CHANGE | PERCENT<br>CHANGE |       |
|--------------------------------|---------------------------|-------------------|------------------|-------------------|-------|
| -----                          |                           |                   |                  |                   |       |
| PERSONAL SERVICES              |                           |                   |                  |                   |       |
| -----                          |                           |                   |                  |                   |       |
| 622-5106                       | MAINTAINER OPRS' SALARIES | 82,217.00         | 82,217.00        | 0.00              | 0.00  |
| 622-5107                       | TEMPORARY OR EXTRA WAGES  | 1,000.00          | 1,000.00         | 0.00              | 0.00  |
| 622-5150                       | LONGEVITY                 | 2,400.00          | 2,400.00         | 0.00              | 0.00  |
| 622-5201                       | SOCIAL SECURITY           | 6,624.00          | 6,624.00         | 0.00              | 0.00  |
| 622-5202                       | GROUP INSURANCE           | 19,606.00         | 19,606.00        | 0.00              | 0.00  |
| 622-5203                       | RETIREMENT                | 11,125.00         | 11,125.00        | 0.00              | 0.00  |
| 622-5204                       | WORKERS' COMPENSATION     | 6,200.00          | 6,200.00         | 0.00              | 0.00  |
| 622-5206                       | UNEMPLOYMENT              | 250.00            | 250.00           | 0.00              | 0.00  |
|                                |                           | -----             | -----            | -----             | ----- |
| TOTAL PERSONAL SERVICES        |                           | 129,422.00        | 129,422.00       | 0.00              | 0.00  |
|                                |                           |                   |                  |                   |       |
| SUPPLIES                       |                           |                   |                  |                   |       |
| -----                          |                           |                   |                  |                   |       |
| 622-5330                       | FUEL AND OIL              | 35,000.00         | 35,000.00        | 0.00              | 0.00  |
| 622-5356                       | ROAD MATERIALS & SUPPLIES | 40,000.00         | 40,000.00        | 0.00              | 0.00  |
| 622-5370                       | MACHINE HIRE              | 0.00              | 0.00             | 0.00              | 0.00  |
|                                |                           | -----             | -----            | -----             | ----- |
| TOTAL SUPPLIES                 |                           | 75,000.00         | 75,000.00        | 0.00              | 0.00  |
|                                |                           |                   |                  |                   |       |
| OTHER SERVICES & CHARGES       |                           |                   |                  |                   |       |
| -----                          |                           |                   |                  |                   |       |
| 622-5420                       | TELECOMMUNICATIONS        | 1,000.00          | 1,000.00         | 0.00              | 0.00  |
| 622-5440                       | UTILITIES                 | 2,000.00          | 2,000.00         | 0.00              | 0.00  |
| 622-5451                       | REPAIRS                   | 25,000.00         | 25,000.00        | 0.00              | 0.00  |
| 622-5454                       | TIRES                     | 7,000.00          | 7,000.00         | 0.00              | 0.00  |
| 622-5499                       | MISCELLANEOUS             | 300.00            | 300.00           | 0.00              | 0.00  |
|                                |                           | -----             | -----            | -----             | ----- |
| TOTAL OTHER SERVICES & CHARGES |                           | 35,300.00         | 35,300.00        | 0.00              | 0.00  |
|                                |                           |                   |                  |                   |       |
| CAPITAL OUTLAY                 |                           |                   |                  |                   |       |
| -----                          |                           |                   |                  |                   |       |
| 622-5571                       | CAPITAL OUTLAY            | 130,000.00        | 130,000.00       | 0.00              | 0.00  |
|                                |                           | -----             | -----            | -----             | ----- |
| TOTAL CAPITAL OUTLAY           |                           | 130,000.00        | 130,000.00       | 0.00              | 0.00  |
|                                |                           |                   |                  |                   |       |
| TOTAL PRECINCT TWO             |                           | 369,722.00        | 369,722.00       | 0.00              | 0.00  |
|                                |                           | =====             | =====            | =====             | ===== |



9-14-2015 01:41 PM

C O C H R A N C O U N T Y  
 BUDGET COMPARISON REPORT  
 AS OF: SEPTEMBER 14TH, 2015

15 -ROAD & BRIDGE FUND

**PRECINCT THREE**

DEPARTMENT EXPENDITURES

|                                | CURRENT<br>BUDGET         | ADOPTED<br>BUDGET | BUDGET<br>CHANGE | PERCENT<br>CHANGE |        |
|--------------------------------|---------------------------|-------------------|------------------|-------------------|--------|
| -----                          |                           |                   |                  |                   |        |
| PERSONAL SERVICES              |                           |                   |                  |                   |        |
| -----                          |                           |                   |                  |                   |        |
| 623-5106                       | MAINTAINER OPRS' SALARIES | 82,217.00         | 82,217.00        | 0.00              | 0.00   |
| 623-5107                       | TEMPORARY OR EXTRA WAGES  | 4,000.00          | 4,000.00         | 0.00              | 0.00   |
| 623-5150                       | LONGEVITY                 | 3,000.00          | 3,600.00         | 600.00            | 20.00  |
| 623-5201                       | SOCIAL SECURITY           | 6,826.00          | 6,826.00         | 0.00              | 0.00   |
| 623-5202                       | GROUP INSURANCE           | 19,606.00         | 19,606.00        | 0.00              | 0.00   |
| 623-5203                       | RETIREMENT                | 11,209.00         | 11,209.00        | 0.00              | 0.00   |
| 623-5204                       | WORKERS' COMPENSATION     | 6,200.00          | 6,200.00         | 0.00              | 0.00   |
| 623-5206                       | UNEMPLOYMENT              | 250.00            | 250.00           | 0.00              | 0.00   |
|                                |                           | -----             | -----            | -----             | -----  |
| TOTAL PERSONAL SERVICES        |                           | 133,308.00        | 133,908.00       | 600.00            | 0.45   |
| SUPPLIES                       |                           |                   |                  |                   |        |
| -----                          |                           |                   |                  |                   |        |
| 623-5330                       | FUEL AND OIL              | 45,000.00         | 45,000.00        | 0.00              | 0.00   |
| 623-5356                       | ROAD MATERIALS & SUPPLIES | 25,000.00         | 25,000.00        | 0.00              | 0.00   |
|                                |                           | -----             | -----            | -----             | -----  |
| TOTAL SUPPLIES                 |                           | 70,000.00         | 70,000.00        | 0.00              | 0.00   |
| OTHER SERVICES & CHARGES       |                           |                   |                  |                   |        |
| -----                          |                           |                   |                  |                   |        |
| 623-5420                       | TELECOMMUNICATIONS        | 1,000.00          | 1,000.00         | 0.00              | 0.00   |
| 623-5440                       | UTILITIES                 | 2,500.00          | 2,500.00         | 0.00              | 0.00   |
| 623-5451                       | REPAIRS                   | 30,000.00         | 30,000.00        | 0.00              | 0.00   |
| 623-5454                       | TIRES                     | 10,000.00         | 10,000.00        | 0.00              | 0.00   |
| 623-5499                       | MISCELLANEOUS             | 0.00              | 0.00             | 0.00              | 0.00   |
|                                |                           | -----             | -----            | -----             | -----  |
| TOTAL OTHER SERVICES & CHARGES |                           | 43,500.00         | 43,500.00        | 0.00              | 0.00   |
| CAPITAL OUTLAY                 |                           |                   |                  |                   |        |
| -----                          |                           |                   |                  |                   |        |
| 623-5571                       | CAPITAL OUTLAY            | 250,000.00        | 75,000.00        | ( 175,000.00)     | 70.00- |
|                                |                           | -----             | -----            | -----             | -----  |
| TOTAL CAPITAL OUTLAY           |                           | 250,000.00        | 75,000.00        | ( 175,000.00)     | 70.00- |
| TOTAL PRECINCT THREE           |                           | 496,808.00        | 322,408.00       | ( 174,400.00)     | 35.10- |
|                                |                           | =====             | =====            | =====             | =====  |

9-14-2015 01:41 PM

C O C H R A N C O U N T Y  
 BUDGET COMPARISON REPORT  
 AS OF: SEPTEMBER 14TH, 2015

15 -ROAD & BRIDGE FUND

**PRECINCT FOUR**

DEPARTMENT EXPENDITURES

|                                | CURRENT<br>BUDGET         | ADOPTED<br>BUDGET | BUDGET<br>CHANGE | PERCENT<br>CHANGE |        |
|--------------------------------|---------------------------|-------------------|------------------|-------------------|--------|
| -----                          |                           |                   |                  |                   |        |
| PERSONAL SERVICES              |                           |                   |                  |                   |        |
| -----                          |                           |                   |                  |                   |        |
| 624-5106                       | MAINTAINER OPRS' SALARIES | 82,217.00         | 82,217.00        | 0.00              | 0.00   |
| 624-5107                       | TEMPORARY OR EXTRA WAGES  | 3,000.00          | 4,000.00         | 1,000.00          | 33.33  |
| 624-5150                       | LONGEVITY                 | 3,000.00          | 3,000.00         | 0.00              | 0.00   |
| 624-5201                       | SOCIAL SECURITY           | 6,749.00          | 6,749.00         | 0.00              | 0.00   |
| 624-5202                       | GROUP INSURANCE           | 19,606.00         | 19,606.00        | 0.00              | 0.00   |
| 624-5203                       | RETIREMENT                | 11,079.00         | 11,079.00        | 0.00              | 0.00   |
| 624-5204                       | WORKERS' COMPENSATION     | 6,200.00          | 6,200.00         | 0.00              | 0.00   |
| 624-5206                       | UNEMPLOYMENT              | 250.00            | 250.00           | 0.00              | 0.00   |
|                                |                           | -----             | -----            | -----             | -----  |
| TOTAL PERSONAL SERVICES        |                           | 132,101.00        | 133,101.00       | 1,000.00          | 0.76   |
| SUPPLIES                       |                           |                   |                  |                   |        |
| -----                          |                           |                   |                  |                   |        |
| 624-5330                       | FUEL AND OIL              | 65,000.00         | 65,000.00        | 0.00              | 0.00   |
| 624-5356                       | ROAD MATERIALS & SUPPLIES | 40,000.00         | 40,000.00        | 0.00              | 0.00   |
|                                |                           | -----             | -----            | -----             | -----  |
| TOTAL SUPPLIES                 |                           | 105,000.00        | 105,000.00       | 0.00              | 0.00   |
| OTHER SERVICES & CHARGES       |                           |                   |                  |                   |        |
| -----                          |                           |                   |                  |                   |        |
| 624-5420                       | TELECOMMUNICATIONS        | 2,000.00          | 2,000.00         | 0.00              | 0.00   |
| 624-5440                       | UTILITIES                 | 4,000.00          | 4,000.00         | 0.00              | 0.00   |
| 624-5451                       | REPAIRS                   | 35,000.00         | 40,000.00        | 5,000.00          | 14.29  |
| 624-5454                       | TIRES                     | 6,000.00          | 10,000.00        | 4,000.00          | 66.67  |
| 624-5499                       | MISCELLANEOUS             | 5,000.00          | 5,000.00         | 0.00              | 0.00   |
|                                |                           | -----             | -----            | -----             | -----  |
| TOTAL OTHER SERVICES & CHARGES |                           | 52,000.00         | 61,000.00        | 9,000.00          | 17.31  |
| CAPITAL OUTLAY                 |                           |                   |                  |                   |        |
| -----                          |                           |                   |                  |                   |        |
| 624-5571                       | CAPITAL OUTLAY            | 200,000.00        | 160,000.00       | ( 40,000.00)      | 20.00- |
|                                |                           | -----             | -----            | -----             | -----  |
| TOTAL CAPITAL OUTLAY           |                           | 200,000.00        | 160,000.00       | ( 40,000.00)      | 20.00- |
| TOTAL PRECINCT FOUR            |                           | 489,101.00        | 459,101.00       | ( 30,000.00)      | 6.13-  |
|                                |                           | =====             | =====            | =====             | =====  |
| *** TOTAL EXPENDITURES ***     |                           | 2,328,261.00      | 1,980,940.00     | ( 347,321.00)     | 0.00   |
|                                |                           | =====             | =====            | =====             | =====  |

C O C H R A N C O U N T Y  
 BUDGET COMPARISON REPORT  
 AS OF: SEPTEMBER 14TH, 2015

**18 - PERSONAL BOND OFFICE FUND**

|                                 | CURRENT<br>BUDGET | ADOPTED<br>BUDGET | BUDGET<br>CHANGE | PERCENT<br>CHANGE |
|---------------------------------|-------------------|-------------------|------------------|-------------------|
| <b>REVENUES</b>                 |                   |                   |                  |                   |
| CHARGES FOR SERVICES            |                   |                   |                  |                   |
| 000-4349.113 PERSONAL BOND FEES | 100.00            | 100.00            | 0.00             | 0.00              |
| TOTAL CHARGES FOR SERVICES      | 100.00            | 100.00            | 0.00             | 0.00              |
| *** TOTAL REVENUES ***          | 100.00            | 100.00            | 0.00             | 0.00              |
| <b>SHERIFF</b>                  |                   |                   |                  |                   |
| DEPARTMENT EXPENDITURES         |                   |                   |                  |                   |
| SUPPLIES                        |                   |                   |                  |                   |
| 560-5330 FUEL AND OIL           | 0.00              | 0.00              | 0.00             | 0.00              |
| TOTAL SUPPLIES                  | 0.00              | 0.00              | 0.00             | 0.00              |
| OTHER SERVICES & CHARGES        |                   |                   |                  |                   |
| 560-5427 TRAVEL                 | 3,000.00          | 3,000.00          | 0.00             | 0.00              |
| 560-5499 MISCELLANEOUS          | 3,000.00          | 3,000.00          | 0.00             | 0.00              |
| TOTAL OTHER SERVICES & CHARGES  | 6,000.00          | 6,000.00          | 0.00             | 0.00              |
| CAPITAL OUTLAY                  |                   |                   |                  |                   |
| 560-5571 CAPITAL OUTLAY         | 6,000.00          | 6,000.00          | 0.00             | 0.00              |
| TOTAL CAPITAL OUTLAY            | 6,000.00          | 6,000.00          | 0.00             | 0.00              |
| TOTAL SHERIFF                   | 12,000.00         | 12,000.00         | 0.00             | 0.00              |
| *** TOTAL EXPENDITURES ***      | 12,000.00         | 12,000.00         | 0.00             | 0.00              |

C O C H R A N C O U N T Y  
 BUDGET COMPARISON REPORT  
 AS OF: SEPTEMBER 14TH, 2015

**19 -ALTERNATIVE DISPUTE RESOLUTION SYSTEM FUND**

|                                    | CURRENT<br>BUDGET | ADOPTED<br>BUDGET | BUDGET<br>CHANGE | PERCENT<br>CHANGE |
|------------------------------------|-------------------|-------------------|------------------|-------------------|
| <b>REVENUES</b>                    |                   |                   |                  |                   |
| CHARGES FOR SERVICES               |                   |                   |                  |                   |
| 000-4340.400 A.D.R. SYSTEM FEES    | 640.00            | 320.00            | ( 320.00)        | 50.00-            |
| TOTAL CHARGES FOR SERVICES         | 640.00            | 320.00            | ( 320.00)        | 50.00-            |
| MISCELLANEOUS                      |                   |                   |                  |                   |
| 000-4380.200 OTHER (MISCELLANEOUS) | 0.00              | 0.00              | 0.00             | 0.00              |
| TOTAL MISCELLANEOUS                | 0.00              | 0.00              | 0.00             | 0.00              |
| *** TOTAL REVENUES ***             | 640.00            | 320.00            | ( 320.00)        | 50.00-            |

**DISTRICT COURT**

DEPARTMENT EXPENDITURES

OTHER SERVICES & CHARGES

|                                |        |        |           |        |
|--------------------------------|--------|--------|-----------|--------|
| 435-5409 A.D.R. CONTRACT       | 640.00 | 320.00 | ( 320.00) | 50.00- |
| TOTAL OTHER SERVICES & CHARGES | 640.00 | 320.00 | ( 320.00) | 50.00- |
| TOTAL DISTRICT COURT           | 640.00 | 320.00 | ( 320.00) | 50.00- |
| *** TOTAL EXPENDITURES ***     | 640.00 | 320.00 | ( 320.00) | 0.00   |

C O C H R A N C O U N T Y  
 BUDGET COMPARISON REPORT  
 AS OF: SEPTEMBER 14TH, 2015

**20 -LATERAL ROAD FUND**

|   | CURRENT<br>BUDGET | ADOPTED<br>BUDGET | BUDGET<br>CHANGE | PERCENT<br>CHANGE |
|---|-------------------|-------------------|------------------|-------------------|
| <b>REVENUES</b>                             |                   |                   |                  |                   |
| INTERGOVERNMENTAL REVENUE                   |                   |                   |                  |                   |
| 000-4333.300 LATERAL ROAD FUND DISTRIBUTION | 17,000.00         | 16,000.00         | ( 1,000.00)      | 5.88-             |
| TOTAL INTERGOVERNMENTAL REVENUE             | 17,000.00         | 16,000.00         | ( 1,000.00)      | 5.88-             |
| TRANSFERS FROM OTHER FUNDS                  |                   |                   |                  |                   |
| 000-4390 TRANSFERS FROM OTHER FUNDS         | 0.00              | 0.00              | 0.00             | 0.00              |
| TOTAL TRANSFERS FROM OTHER FUNDS            | 0.00              | 0.00              | 0.00             | 0.00              |
| *** TOTAL REVENUES ***                      | 17,000.00         | 16,000.00         | ( 1,000.00)      | 5.88-             |

**LATERAL ROAD DEPTS**  
 DEPARTMENT EXPENDITURES

|                                |           |           |           |        |
|--------------------------------|-----------|-----------|-----------|--------|
| OTHER SERVICES & CHARGES       |           |           |           |        |
| 625-5417 BANK CHARGES          | 0.00      | 0.00      | 0.00      | 0.00   |
| TOTAL OTHER SERVICES & CHARGES | 0.00      | 0.00      | 0.00      | 0.00   |
| CAPITAL OUTLAY                 |           |           |           |        |
| 625-5591 PCT. #1, LATERAL ROAD | 0.00      | 0.00      | 0.00      | 0.00   |
| 625-5592 PCT. #2, LATERAL ROAD | 6,693.00  | 33,307.00 | 26,614.00 | 397.64 |
| 625-5593 PCT. #3, LATERAL ROAD | 6,693.00  | 33,307.00 | 26,614.00 | 397.64 |
| 625-5594 PCT. #4, LATERAL ROAD | 6,693.00  | 33,307.00 | 26,614.00 | 397.64 |
| TOTAL CAPITAL OUTLAY           | 20,079.00 | 99,921.00 | 79,842.00 | 397.64 |
| TOTAL LATERAL ROAD DEPTS       | 20,079.00 | 99,921.00 | 79,842.00 | 397.64 |
| *** TOTAL EXPENDITURES ***     | 20,079.00 | 99,921.00 | 79,842.00 | 0.00   |

C O C H R A N C O U N T Y  
 BUDGET COMPARISON REPORT  
 AS OF: SEPTEMBER 14TH, 2015

**22 -COUNTY CLERK RECORDS  
 MANAGEMENT AND PRESERVATION FUND**

|   | CURRENT<br>BUDGET | ADOPTED<br>BUDGET | BUDGET<br>CHANGE | PERCENT<br>CHANGE |
|---|-------------------|-------------------|------------------|-------------------|
| <b>REVENUES</b>   |                   |                   |                  |                   |
| CHARGES FOR SERVICES  |                   |                   |                  |                   |
| 000-4340.398 COURT RECORDS PRESERVATION                                   | 600.00            | 600.00            | 0.00             | 0.00              |
| 000-4340.399 COUNTY CLERK R M & P FEES                                    | 5,000.00          | 9,000.00          | 4,000.00         | 80.00             |
| TOTAL CHARGES FOR SERVICES  | 5,600.00          | 9,600.00          | 4,000.00         | 71.43             |
| *** TOTAL REVENUES ***  | 5,600.00          | 9,600.00          | 4,000.00         | 71.43             |
| <b>COUNTY AND DISTRICT CLERK<br/>             DEPARTMENT EXPENDITURES</b> |                   |                   |                  |                   |
| OTHER SERVICES & CHARGES  |                   |                   |                  |                   |
| 403-5499 CNTY CLERK R.M. & P LGC118.                                      | 5,600.00          | 25,000.00         | 19,400.00        | 346.43            |
| TOTAL OTHER SERVICES & CHARGES  | 5,600.00          | 25,000.00         | 19,400.00        | 346.43            |
| TOTAL COUNTY AND DISTRICT CLERK   | 5,600.00          | 25,000.00         | 19,400.00        | 346.43            |
| *** TOTAL EXPENDITURES ***  | 5,600.00          | 25,000.00         | 19,400.00        | 0.00              |

C O C H R A N C O U N T Y  
 BUDGET COMPARISON REPORT  
 AS OF: SEPTEMBER 14TH, 2015

**23 -COUNTY RECORDS  
 MANAGMENT AND PRESERVATION FUND**

|   | CURRENT<br>BUDGET | ADOPTED<br>BUDGET | BUDGET<br>CHANGE | PERCENT<br>CHANGE |
|---|-------------------|-------------------|------------------|-------------------|
| <b>REVENUES</b>                                     |                   |                   |                  |                   |
| CHARGES FOR SERVICES                                |                   |                   |                  |                   |
| 000-4340.399 COUNTY R M & P FEES                    | 1,100.00          | 800.00            | ( 300.00)        | 27.27-            |
| TOTAL CHARGES FOR SERVICES                          | 1,100.00          | 800.00            | ( 300.00)        | 27.27-            |
| *** TOTAL REVENUES ***                              | 1,100.00          | 800.00            | ( 300.00)        | 27.27-            |
| <b>NON-DEPARTMENTAL<br/>DEPARTMENT EXPENDITURES</b> |                   |                   |                  |                   |
| OTHER SERVICES & CHARGES                            |                   |                   |                  |                   |
| 409-5499 COUNTY R M & P EXP LGC 203.                | 1,100.00          | 1,500.00          | 400.00           | 36.36             |
| TOTAL OTHER SERVICES & CHARGES                      | 1,100.00          | 1,500.00          | 400.00           | 36.36             |
| TOTAL NON-DEPARTMENTAL                              | 1,100.00          | 1,500.00          | 400.00           | 36.36             |
| *** TOTAL EXPENDITURES ***                          | 1,100.00          | 1,500.00          | 400.00           | 0.00              |

C O C H R A N C O U N T Y  
 BUDGET COMPARISON REPORT  
 AS OF: SEPTEMBER 14TH, 2015

**24 -COURTHOUSE SECURITY FUND**

|                                       | CURRENT<br>BUDGET | ADOPTED<br>BUDGET | BUDGET<br>CHANGE | PERCENT<br>CHANGE |
|---------------------------------------|-------------------|-------------------|------------------|-------------------|
| <b>REVENUES</b>                       |                   |                   |                  |                   |
| CHARGES FOR SERVICES                  |                   |                   |                  |                   |
| 000-4349.399 COURTHOUSE SECURITY FEES | 3,000.00          | 2,600.00          | ( 400.00)        | 13.33-            |
| TOTAL CHARGES FOR SERVICES            | 3,000.00          | 2,600.00          | ( 400.00)        | 13.33-            |
| TRANSFERS FROM OTHER FUNDS            |                   |                   |                  |                   |
| 000-4390 TRANSFERS FROM OTHER FUNDS   | 0.00              | 0.00              | 0.00             | 0.00              |
| TOTAL TRANSFERS FROM OTHER FUNDS      | 0.00              | 0.00              | 0.00             | 0.00              |
| *** TOTAL REVENUES ***                | 3,000.00          | 2,600.00          | ( 400.00)        | 13.33-            |

**COURTHOUSE**

DEPARTMENT EXPENDITURES

OTHER SERVICES & CHARGES

|                                      |           |          |             |        |
|--------------------------------------|-----------|----------|-------------|--------|
| 510-5499 COURTHOUSE SECURITY CCP102. | 13,000.00 | 7,000.00 | ( 6,000.00) | 46.15- |
| TOTAL OTHER SERVICES & CHARGES       | 13,000.00 | 7,000.00 | ( 6,000.00) | 46.15- |
| TOTAL COURTHOUSE                     | 13,000.00 | 7,000.00 | ( 6,000.00) | 46.15- |
| *** TOTAL EXPENDITURES ***           | 13,000.00 | 7,000.00 | ( 6,000.00) | 0.00   |



C O C H R A N C O U N T Y  
 BUDGET COMPARISON REPORT  
 AS OF: SEPTEMBER 14TH, 2015

**29 -COURT REPORTER SERVICE FUND**

|  | CURRENT<br>BUDGET | ADOPTED<br>BUDGET | BUDGET<br>CHANGE | PERCENT<br>CHANGE |
|--|-------------------|-------------------|------------------|-------------------|
| <b>REVENUES</b>                          |                   |                   |                  |                   |
| CHARGES FOR SERVICES                     |                   |                   |                  |                   |
| 000-4340.901 COURT REPORTER FEES GC 51.6 | 480.00            | 300.00            | ( 180.00)        | 37.50-            |
| TOTAL CHARGES FOR SERVICES               | 480.00            | 300.00            | ( 180.00)        | 37.50-            |
| *** TOTAL REVENUES ***                   | 480.00            | 300.00            | ( 180.00)        | 37.50-            |

**COUNTY COURT**

DEPARTMENT EXPENDITURES

OTHER SERVICES & CHARGES

|                                  |        |        |        |        |
|----------------------------------|--------|--------|--------|--------|
| 426-5499 GOV'T CODE 51.601 ITEMS | 150.00 | 600.00 | 450.00 | 300.00 |
| TOTAL OTHER SERVICES & CHARGES   | 150.00 | 600.00 | 450.00 | 300.00 |
| TOTAL COUNTY COURT               | 150.00 | 600.00 | 450.00 | 300.00 |

**DISTRICT COURT**

DEPARTMENT EXPENDITURES

OTHER SERVICES & CHARGES

|                                     |        |          |        |       |
|-------------------------------------|--------|----------|--------|-------|
| 435-5499 GOV'T CODE 51.601(c) ITEMS | 350.00 | 600.00   | 250.00 | 71.43 |
| TOTAL OTHER SERVICES & CHARGES      | 350.00 | 600.00   | 250.00 | 71.43 |
| TOTAL DISTRICT COURT                | 350.00 | 600.00   | 250.00 | 71.43 |
| *** TOTAL EXPENDITURES ***          | 500.00 | 1,200.00 | 700.00 | 0.00  |

C O C H R A N C O U N T Y  
 BUDGET COMPARISON REPORT  
 AS OF: SEPTEMBER 14TH, 2015

**30 -AIRPORT FUND**

**REVENUES**

|  | CURRENT<br>BUDGET | ADOPTED<br>BUDGET | BUDGET<br>CHANGE | PERCENT<br>CHANGE |
|--|-------------------|-------------------|------------------|-------------------|
| -----                                  |                   |                   |                  |                   |
| MISCELLANEOUS                          |                   |                   |                  |                   |
| -----                                  |                   |                   |                  |                   |
| 000-4360.100 INTEREST EARNINGS         | 0.00              | 0.00              | 0.00             | 0.00              |
| 000-4364.100 SALE OF ASSETS            | 0.00              | 0.00              | 0.00             | 0.00              |
| 000-4370.102 RENT - AIRPORT FACILITIES | 2,300.00          | 2,300.00          | 0.00             | 0.00              |
| 000-4380.200 OTHER [MISCELLANEOUS]     | 0.00              | 0.00              | 0.00             | 0.00              |
|  | -----             | -----             | -----            | -----             |
| TOTAL MISCELLANEOUS                    | 2,300.00          | 2,300.00          | 0.00             | 0.00              |
| TRANSFERS FROM OTHER FUNDS             |                   |                   |                  |                   |
| -----                                  |                   |                   |                  |                   |
| 000-4390 TRANSFERS FROM OTHER FUNDS    | 20,000.00         | 20,000.00         | 0.00             | 0.00              |
|  | -----             | -----             | -----            | -----             |
| TOTAL TRANSFERS FROM OTHER FUNDS       | 20,000.00         | 20,000.00         | 0.00             | 0.00              |
| *** TOTAL REVENUES ***                 | 22,300.00         | 22,300.00         | 0.00             | 0.00              |
|  | =====             | =====             | =====            | =====             |

C O C H R A N C O U N T Y  
 BUDGET COMPARISON REPORT  
 AS OF: SEPTEMBER 14TH, 2015

30 -AIRPORT FUND

**AIRPORT**

DEPARTMENT EXPENDITURES

|                                |                              | CURRENT<br>BUDGET | ADOPTED<br>BUDGET | BUDGET<br>CHANGE | PERCENT<br>CHANGE |
|--------------------------------|------------------------------|-------------------|-------------------|------------------|-------------------|
| -----                          |                              |                   |                   |                  |                   |
| PERSONAL SERVICES              |                              |                   |                   |                  |                   |
| -----                          |                              |                   |                   |                  |                   |
| 518-5103                       | ASS'T CARETAKER SALARY [15%] | 6,151.00          | 6,151.00          | 0.00             | 0.00              |
| 518-5107                       | SEASONAL SALARY              | 250.00            | 250.00            | 0.00             | 0.00              |
| 518-5115                       | CARETAKER'S SALARY [15%]     | 6,375.00          | 6,375.00          | 0.00             | 0.00              |
| 518-5150                       | LONGEVITY                    | 0.00              | 0.00              | 0.00             | 0.00              |
| 518-5201                       | SOCIAL SECURITY              | 978.00            | 978.00            | 0.00             | 0.00              |
| 518-5202                       | GROUP INSURANCE [15%]        | 2,941.00          | 2,941.00          | 0.00             | 0.00              |
| 518-5203                       | RETIREMENT                   | 1,629.00          | 1,629.00          | 0.00             | 0.00              |
| 518-5204                       | WORKERS COMPENSATION         | 380.00            | 450.00            | 70.00            | 18.42             |
| 518-5206                       | UNEMPLOYMENT                 | 100.00            | 100.00            | 0.00             | 0.00              |
|                                |                              | -----             | -----             | -----            | -----             |
| TOTAL PERSONAL SERVICES        |                              | 18,804.00         | 18,874.00         | 70.00            | 0.37              |
| SUPPLIES                       |                              |                   |                   |                  |                   |
| -----                          |                              |                   |                   |                  |                   |
| 518-5330                       | FUEL & OIL                   | 600.00            | 600.00            | 0.00             | 0.00              |
| 518-5332                       | CUSTODIAL SUPPLIES           | 400.00            | 400.00            | 0.00             | 0.00              |
|                                |                              | -----             | -----             | -----            | -----             |
| TOTAL SUPPLIES                 |                              | 1,000.00          | 1,000.00          | 0.00             | 0.00              |
| OTHER SERVICES & CHARGES       |                              |                   |                   |                  |                   |
| -----                          |                              |                   |                   |                  |                   |
| 518-5440                       | UTILITIES                    | 1,300.00          | 1,300.00          | 0.00             | 0.00              |
| 518-5451                       | REPAIR                       | 5,000.00          | 5,000.00          | 0.00             | 0.00              |
| 518-5454                       | TIRES                        | 200.00            | 200.00            | 0.00             | 0.00              |
|                                |                              | -----             | -----             | -----            | -----             |
| TOTAL OTHER SERVICES & CHARGES |                              | 6,500.00          | 6,500.00          | 0.00             | 0.00              |
| CAPITAL OUTLAY                 |                              |                   |                   |                  |                   |
| -----                          |                              |                   |                   |                  |                   |
| 518-5571                       | CAPITAL OUTLAY               | 0.00              | 0.00              | 0.00             | 0.00              |
|                                |                              | -----             | -----             | -----            | -----             |
| TOTAL CAPITAL OUTLAY           |                              | 0.00              | 0.00              | 0.00             | 0.00              |
| TOTAL AIRPORT                  |                              | 26,304.00         | 26,374.00         | 70.00            | 0.27              |
|                                |                              | =====             | =====             | =====            | =====             |
| *** TOTAL EXPENDITURES ***     |                              | 26,304.00         | 26,374.00         | 70.00            | 0.00              |
|                                |                              | =====             | =====             | =====            | =====             |

## Cochran County Salaries 2016

(Not Including Longevity)

|                                    | Month                            | Annual       |         | Travel Monthly | Gross        |
|------------------------------------|----------------------------------|--------------|---------|----------------|--------------|
| County Judge                       | \$ 5,761.15                      | \$ 69,133.80 | (i)     | \$ 600.00      | \$ 76,333.80 |
| County Judge (Juv. Board Sal.)     | 50.00                            | \$ 600.00    |         |                |              |
| Secretary                          | 3,247.50                         | \$ 38,970.00 |         |                |              |
| County and District Clerk          | 3,747.00                         | \$ 44,964.00 |         | 50.00          | 45,564.00    |
| First Deputy                       | 3,247.50                         | \$ 38,970.00 |         |                |              |
| Second Deputy                      | 3,150.75                         | \$ 37,809.00 |         |                |              |
| Veteran's County Service Officer   | -                                | \$ -         |         | -              |              |
| District Judge (Supplemental Sal.) | 446.05                           | \$ 5,352.60  | (b)     |                |              |
| District Judge (Juv. Board Sal.)   | 50.00                            | \$ 600.00    |         |                |              |
| Court Administrator                | 563.00                           | \$ 6,756.00  | (b)     |                |              |
| Court Reporter                     | 637.17                           | \$ 7,646.04  |         |                |              |
| Justice of the Peace               | 3,747.00                         | \$ 44,964.00 |         |                |              |
| Part-time employees                | (min. wage to \$15.47/hr)        |              |         |                |              |
| County Attorney                    | 6,663.66                         | \$ 79,963.92 | (j)     |                |              |
| Secretary                          | 3,247.50                         | \$ 38,970.00 |         |                |              |
| District Attorney                  | 799.38                           | \$ 13,232.56 | (k)     |                |              |
| Special Investigator               | 667.38                           | \$ 8,008.56  | (b)     | 41.66          | 8,508.48     |
| Secretary                          | 521.96                           | \$ 6,263.52  | (b)     |                |              |
| County Auditor                     | 3,747.00                         | \$ 44,964.00 |         | 150.00         | 46,764.00    |
| Assistant                          | 3,247.50                         | \$ 38,970.00 |         |                |              |
| County Treasurer                   | 3,747.00                         | \$ 44,964.00 |         | 50.00          | 45,564.00    |
| County Tax Assessor/Collector      | 3,747.00                         | \$ 44,964.00 |         |                |              |
| First Deputy                       | 3,247.50                         | \$ 38,970.00 |         |                |              |
| Second Deputy                      | 3,150.75                         | \$ 37,809.00 |         |                |              |
| Courthouse Custodian               | 3,260.91                         | \$ 39,130.92 |         |                |              |
| Assistant                          |                                  | \$ -         |         |                |              |
| Cemetery & Park Custodian          | 3,425.70                         | \$ 41,108.40 | (a)     |                |              |
| Assistant                          | 3,316.66                         | \$ 39,799.92 |         |                |              |
| Constable                          | 2,624.41                         | \$ 31,492.92 | (a)     |                |              |
| County Sheriff                     | 3,923.66                         | \$ 47,083.92 | (a,c)   |                |              |
| Chief Deputy                       | 3,785.55                         | \$ 45,426.60 | (a,c,d) |                | 47,348.49    |
| Deputy Sheriff                     | 3,545.55                         | \$ 42,546.60 | (a,c,e) |                | 44,346.65    |
| Communications Supervisor          | 3,147.00                         | \$ 37,764.00 | (c,f)   |                | 39,361.70    |
| Reserve Deputies                   | (min. wage to \$15.47/hr) (c)    |              |         |                |              |
| Head Jailer                        | 3,147.00                         | \$ 37,764.00 | (c, g)  |                | 39,361.70    |
| Jailers                            | (min. wage to \$15.47/hr) (c, g) |              |         |                |              |
| Dispatchers                        | (min. wage to \$15.47/hr) (c, g) |              |         |                |              |
| Librarian                          | 2,841.58                         | \$ 34,098.96 |         |                |              |
| Activity Bldg/Library Custodian    | 3,425.70                         | \$ 41,108.40 |         |                |              |
| County Extension Agent - AG        | 1,016.67                         | \$ 12,200.04 | (a)     |                |              |
| County Extension Agent - FCS       |                                  | \$ -         |         | -              | -            |
| Secretary                          | 3,150.75                         | \$ 37,809.00 |         |                |              |
| County Commissioners               | 3,205.75                         | \$ 38,469.00 |         | 850.00         | 48,669.00    |
| Full-time employees                | 3,425.70                         | \$ 41,108.40 | (h)     |                |              |
| Part-time employees                | (min. wage to \$15.47/hr)        |              |         |                |              |

(a) Vehicle furnished

(e) \$1,800.05/yr holiday pay

(b) Shared with Hockley County

(f) \$1,597.70/yr holiday pay

(i) Includes \$25,200 State Supplement

(c) Uniforms furnished

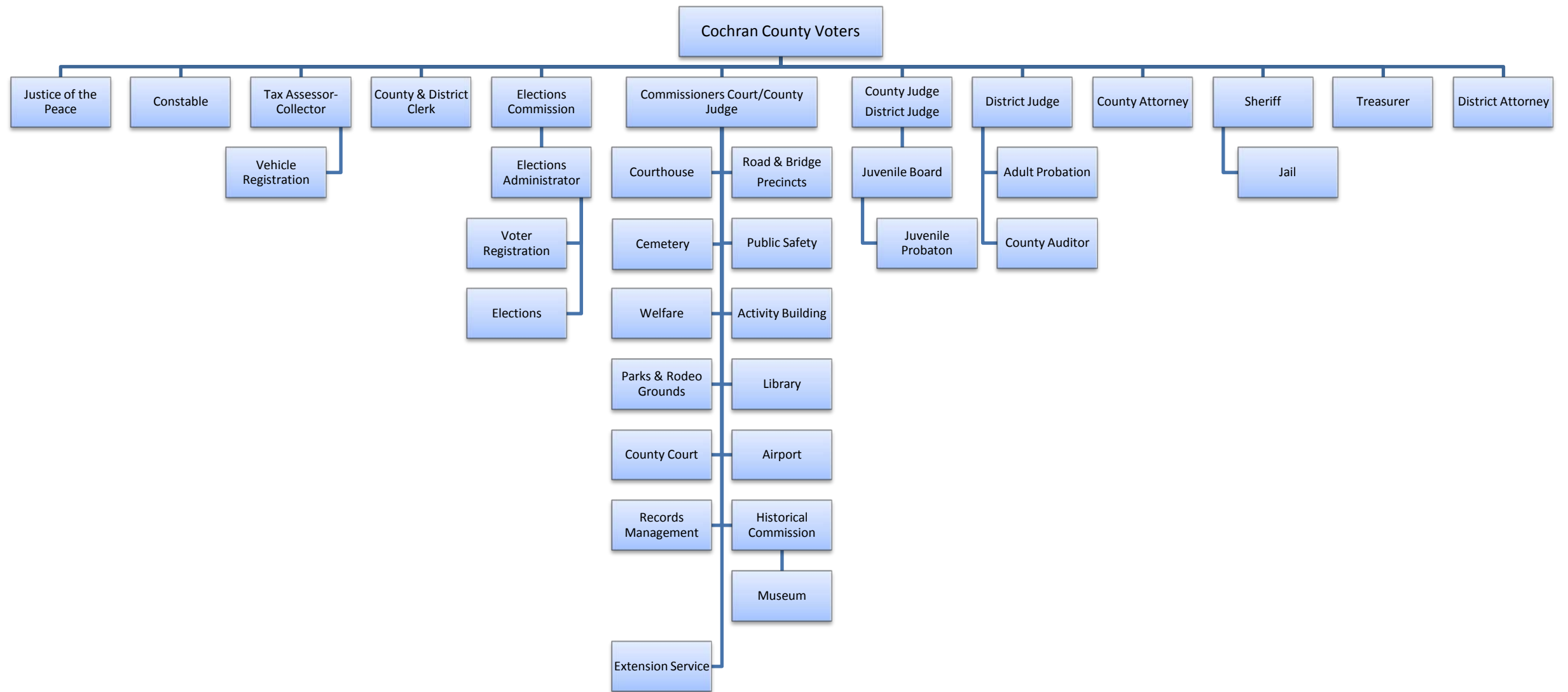
(g) plus eleven days holiday pay

(j) Includes \$35,000 State Supplement

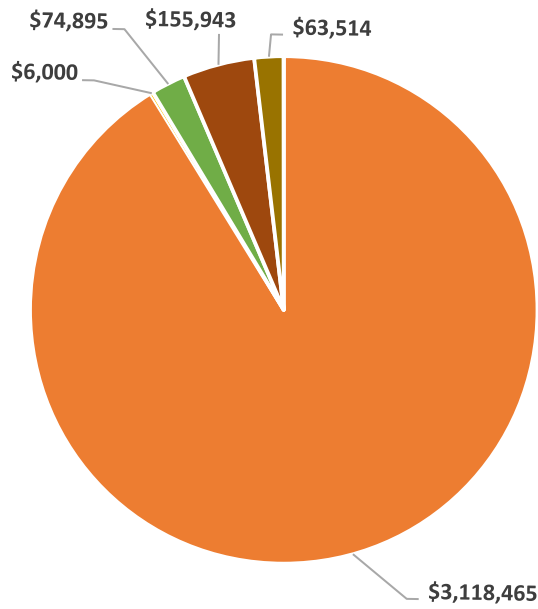
(d) \$1,921.89/yr holiday pay

(h) Some furnished vehicle

(k) Includes \$3,640 State Supplement

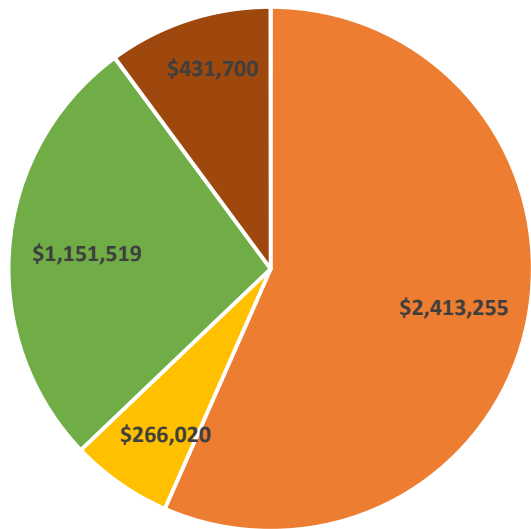


### 2016 General Fund Budgeted Revenue



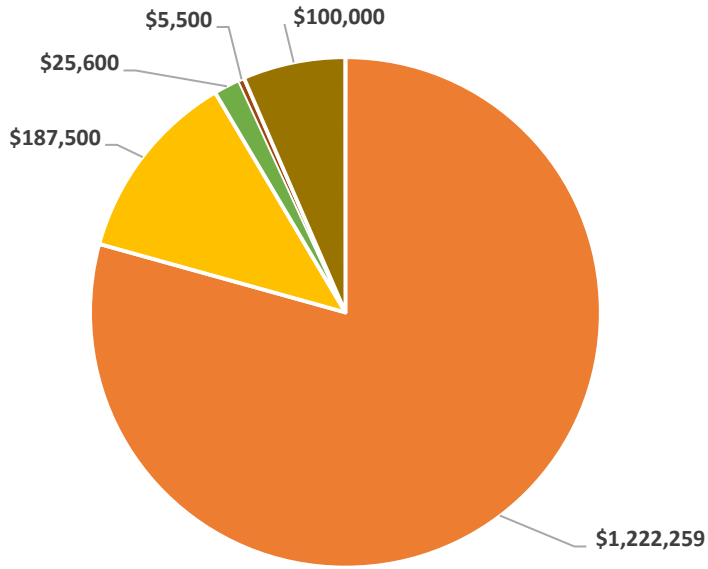
■ Property Taxes ■ Licenses & Permits ■ Intergovernmental Revenue ■ Charges for Services ■ Miscellaneous

### 2016 General Fund Budgeted Expenditures



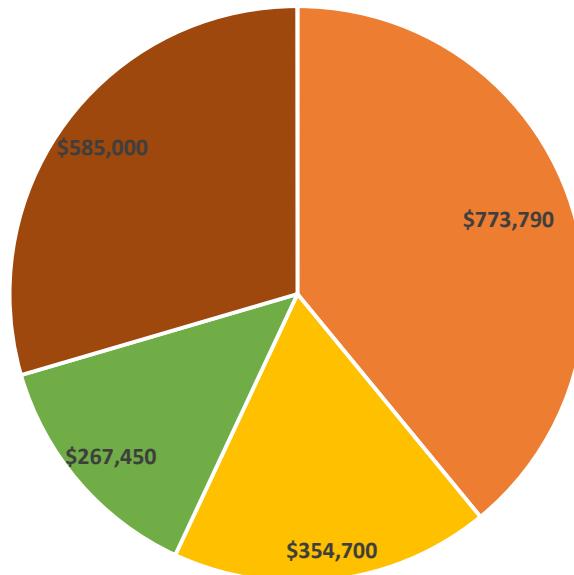
■ Personal Services ■ Supplies ■ Other Services & Charges ■ Capital Outlay

### 2016 Road & Bridge Budgeted Revenue



■ Taxes ■ Licenses & Permits ■ Fines & Forfeitures ■ Miscellaneous ■ Transfers In

### 2016 Road & Bridge Fund Budgeted Expenditures



■ Personal Services ■ Supplies ■ Other Services & Charges ■ Capital Outlay